

KOSO

Smart Valve Positioner EP1000 Series



- Accumulating operation data using its self-diagnostic function enables you to reduce plant downtime by ensuring stable and safe operation of control valves, thereby allowing you to optimize and enhance the efficiency of equipment management.



Quick replacement from the existing positioner

- No separate power supply source is needed as it uses 2-wire input signal of 4 to 20 mA.



Various setting items and

- You can optimize the sensitivity and offset according to various parameters.
- You can set it using PC setting software, HHC or built-in buttons.

Standard Specification	Split range setting	Alarm setting	Cutoff setting
	Range & Opening limits setting	PID setting	Dead band setting
	Position Characteristics setting, presets(Equal %, etc.) or free adjust(max. 21 points)		
	Actuator type setting (Single or Double acting, Reverse or Direct action, etc.)		



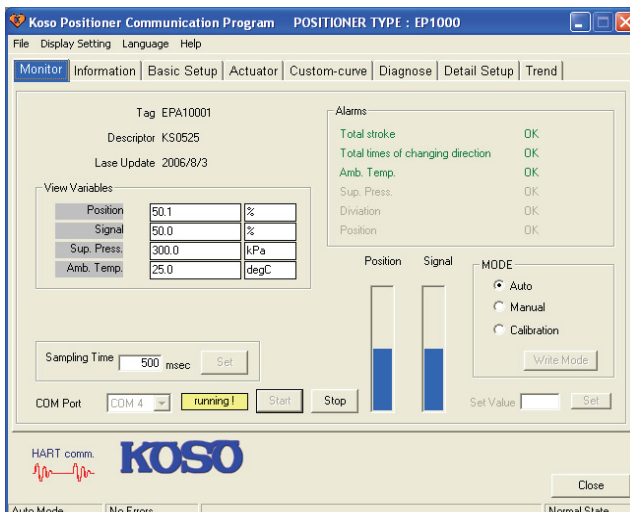
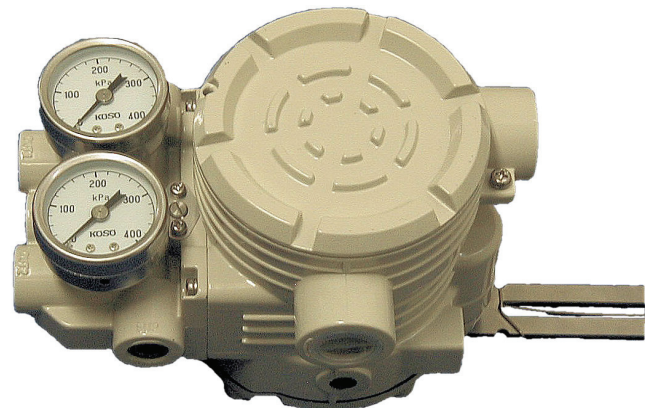
HART Communication as standard

- It can carry out detailed settings of a positioner or it can transmit a variety of device information from the positioner.
- It can reduce your maintenance costs.



Simple calibration

- Full auto tuning function enables you to automatically set the opening range or sensitivity at appropriate values by easy button operation.
- Even after setting a PID constant, the span auto tuning function enables you to automatically set only the opening range at appropriate values.



Free ware KosoHart

- It run on your MS-Windows PC.
- You can easily set parameters
- You can get clear-cut information.
- You can set a deviation alarms, etc.



Trend screen

- It enables you to dynamically confirm the following capability of the control valve opening in response to an input signal.



Set values transfer

- A list of set values can be printed.
- Set values of a positioner can be transferred to another one.

Specification (at 20 deg. C)

* The below values are performances with the actuator unit only.

Model		Smart Positioner EP1000 Series	
		Single Acting	Double Acting
Input signal		4~20mADC	
Input voltage		10VDC (Equivalent in 500Ω at 20mA)	
Supply air press.		140~700kPa	
Air consumption		5ℓ at 140kPa (max 175ℓ)	15ℓ at 400kPa (max 400ℓ)
Linearity		±1%F.S.	±1.5%F.S.
Ambient temp.		-20°C~80°C、10~90%RH	
Enclosure		Weatherproof Type (IP65), Flameproof Type (ExdIICT6)*1	
EMC	Emission	IEC61326:1997 + A1:1998 + A2:2001 + A3:2003	
	Immunity	IEC61326:1997 + A1:1998 + A2:2001 + A3:2003	

*1 Flameproof enclosure is available by option.

Model

* Excerpt of part

EP1000-A01-2K-0

Communication Standard	
0	HART
1	FF*2

Applied Actuator	
A	Single acting
C	Double acting

Enclosure	
0	Weatherproof type (IP65)
1	Flameproof type (ExdIICT6)

Feedback lever	
1	for Linear valves
4	for Rotary valves
8	for Long stroke valves

Range of Press. Gage	
2	200kPa or Eq.
4	400kPa or Eq.
10	1000kPa or Eq.

Optional specs	
0	Without optional spec
P	With position transmitter
N	NPT connection
C	Withc conductive plastic POT.

Unit of Press. Gage	
K	kPa
M	MPa
P	psi & bar Double Scales
G	kPa & kgf/cm2 Double Scales

*2 Release at end of 2007

Outline Drawing

