

STANDARD SPECIFICATION

*DISC DAMPER TYPE
BUTTERFLY-VALVE*



600B SERIES

KOSO

KOSO

STANDARD SPECIFICATION

BUTTERFLY-VALVE DISC DAMPER TYPE 600B SERIES

GENERAL

The Series 600B is a wafer type butterfly valve, designed to be inserted between the pipeline flanges for connection. As an economical valve to control liquids or gases of relatively low pressure, it is available up to large diameter. This compact and lightweight valve can be used for fluids containing floating particles as well.

STANDARD SPECIFICATIONS

Body

- Type: Disc damper type.
Size: 3"~24" (80~600mm).
Rating: L Class JIS 10K, ANSI 150#.
M Class JIS 20K, ANSI 300#.

Connection: Wafer.

Face to Face dimension: See pages 12~22.

Materials: FC25, SCPH2, SCS13A, SCS14A and other Alloy Steels.

FC25: L Class Body, 12" or under

As to the operating Temp./Press. for each materials, see pages 2~3, Tables 1 & 2.

Bonnet: Standard bonnet (Casted with Body).
..... -45~450°C

Note: Please be careful not to exceed allowable temperature-pressure limitation for each material.

Gland packing: Teflon Asbestos, Pillarfoil.

Gasket: Teflon, Asbestos, Pillarfoil.

Painting color: Munsell N-6 (Epoxy resin group) is standard. For stainless steel body, no painting is standard.

Trim

Disc type: Damper type

Characteristic: Inherent characteristic

Material & Treatment: See page 2, Table 1.

Actuator

Standard specification: See page 2.



Performance

Rated Cv value: See page 5, Table 3.

Flow characteristics: See page 5, Fig. 4.

Rangeability: 90° opening 30 : 1

60° opening 15 : 1

Leakage: When Disc opening is 90°.

Valve size	Rated Cv X
3" (80mm)	2.5%
4"~6" (100~150mm)	1.5%
8"~10" (200~250mm)	1.0%
12"~14" (300~350mm)	0.75%
16"~18" (400~450mm)	0.6%
20"~24" (500~600mm)	0.5%

Allowable press. drop: See pages 6~9, Table 4.

Dimensions: See pages 12~22.

Mounting form: See page 10, Fig. 5.

Weight: See page 11, Table 5.

Optional special specification: See page 2.

Actuator Specifications

Specification	Pneumatic Cylinder		Diaphragm	Solid State Electronic Actuator		Electric Motor
	6500RA, 6600RA		5200RA	3500RB	3600RA	3400RA
	Duble Acting	Spring Return	Multi-Spring	DC Motor Resolution 0.3%	AC Motor Resolution 0.4%	AC Motor
Purpose	Modulation/On-off		Modulation	Modulation		On-off
Air Supply (Spring range) or Power Supply (Input signal)	4.0, 5.0kgf/cm ² G	4.0 (1.35~2.65) kgf/cm ² G 5.0 (1.7~3.3) kgf/cm ² G	3.0 (0.8~2.0) kgf/cm ² G 3.4 (0.8~2.0) kgf/cm ² G 3.4 (1.2~3.0) kgf/cm ² G	AC100V 50/60Hz (DC4~20mA)		AC100V 50/60Hz Change-over contact
Piping/Wiring Conn.	Rc ¹ / ₈ (for Cylinder size 60, 90) ,Rc ¹ / ₄ , Rc ³ / ₈ , Rc ¹ / ₂		Rc ¹ / ₄	2-G ¹ / ₂		2-G ¹ / ₂
Opening angle	60 deg or 90 deg		60 deg	60 deg or 90 deg		60 deg or 90 deg
Action	Po. Single increase Valve Open or Shut	DA: Air to Valve shut RA: Air to Valve open		DA: Signal increase Valve Shut RA: Signal increase Valve Open		Manual selection Open, Shut Stop
Hysteresis	Less than ±2% of FS with positioner		Less than 1% of FS with positioner	Less than 0.5% of FS	Less than 0.8% of FS	—
Linearity	Less than ±2% of FS with positioner		Less than ±2% of FS with positioner	Less than ±1% of FS	Less than ±1% of FS	—
Ambient Temperature	-20~+60°C		-20~+60°C	-10~+55°C		-10~+50°C
Painting	Munsell N-6 (Epoxy Resin Group)			S type P4417 (Blue)		
Options	E/P·P/P Positoner, Air-set, Limit switch ,Solenoid Valve, Speed controller, Lock-up Valve, Open or Shut stopper, Position transmitter, Manual handle, Volume tank, etc.			Resolution 0.1%, Split range, Space heater, Junction Box, Position transmitter Manual handle, etc.	Overload unit, Space heater, Torque switch Junction Box, Manual handle, etc.	Potentiometer, Micro switch Space heater, etc.

Optional Special Specifications (additional cost is required):

- Special testing.
Flow characteristics testing, Material certificate,
Low temperature testing, Steam testing,
Non-destructive testing, Radiographic testing.
- Sand/Dust proof.
- Special piping & fitting.
- Cold area proof.
- Vacuum service proof.
- Tropical area proof.
- SUS bolts/nuts for exposed parts.
- No copper alloy.
- Non-standard painting.
- Oxygen clean.
- Salty environment proof.

Table 1 Body/Trim Materials Combinations, Operating Temperature.

Table 1-1 Body size: 3" ~ 12" (8 ~ 300mm).

Body Material JIS/ASTM		FC25	SCPH2/A216-WCB	SCS13A	SCS14A/A351-CF8M
Disc	Material	SCS14A	SCS14A	SCS14A	SCS14A
Stem	Material	SUS630	SUS630	SUS630	SUS316
	Treatment	Heat Treatment	Heat Treatment	Heat Treatment	—
Bearing	Material	SUS316	SUS316	SUS316	SUS316
	Treatment	Chrome plated	Chrome plated	Chrome plated	Chrome plated
Operating Temp. (°C)		0 ~ +200	-5 ~ +400	-45 ~ +400	-45 ~ +450

Table 1-2 Body size: 14" ~ 24" (350 ~ 600mm).

Body Material JIS/ASTM		SCPH2/A216-WCB		SCS13A		SCS14A/A351-CF8M
Disc	Material	SCPH2	SCS13A	SCS13A	SCS14A	SCS14A
Stem	Material	SUS630		SUS630		SUS316
	Treatment	Heat treatment		Heat treatment		—
Bearing	Material	SUS316		SUS316		SUS316
	Treatment	Chrome plated		Chrome plated		Chrome plated
Operating Temp. (°C)		-5 ~ +400		-45 ~ +400		-45 ~ +450

Table 2 Body Materials Operating Pressure-Temperature Ratings.

Table2-1 ANSI

Temp. °C	Class 125	Temp. °C	Class 150			Class 300		
	FC 25		SCPH2 WCB	SCS13A	SCS14A CF-8M	SCPH2 WCB	SCS13A	SCS14A CF-8M
-5~65	14.0	-196~38	—	19.4	19.4	—	50.6	50.8
80	13.5	-5 ~38	20.0	19.4	19.4	52.1	50.6	50.6
100	12.9	50	19.6	18.8	18.8	51.1	48.7	49.0
120	12.3	100	18.0	16.0	16.5	47.3	41.7	43.0
140	11.7	150	16.1	14.2	15.1	46.1	37.0	39.3
160	11.0	200	14.3	12.8	14.0	44.7	33.4	36.4
180	10.4	250	12.3	11.9	12.3	42.5	31.1	34.1
200	9.7	300	10.4	10.4	10.4	39.5	29.7	32.2
		350	8.6	8.6	8.6	37.7	28.7	31.0
		375	7.5	7.5	7.5	37.2	28.3	30.3
		400	6.6	6.6	6.6	35.2	28.0	29.7
		425	—	5.7	5.7	—	27.7	29.3
		450	—	4.8	4.8	—	27.4	28.7

Unit: kgf/cm²G

Table2-2 JIS

Unit: kgf/cm²G

Temp. °C	10K		20K
	FC 25	SCPH2	SCPH2
~120	14.0	14.0	34.0
~220	10.0	12.0	31.0
~300	—	10.0	29.0
~350	—	—	26.0
~400	—	—	20.0

Note: FC 25 is available up to 200°C.

Fig. 1 Gland Packing Operating Temperature-Pressure Limitation.

**Fig. 1-1 Teflon asbestos (P4513+P4513L)
Oxydizing fluid (P4513+P# 2S)**

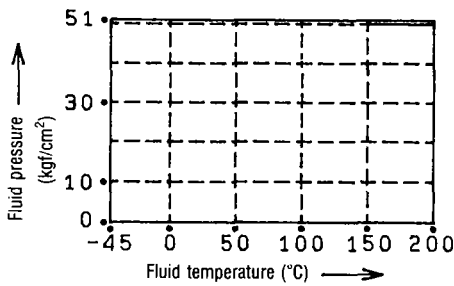


Fig. 1-2 Pillarfoil

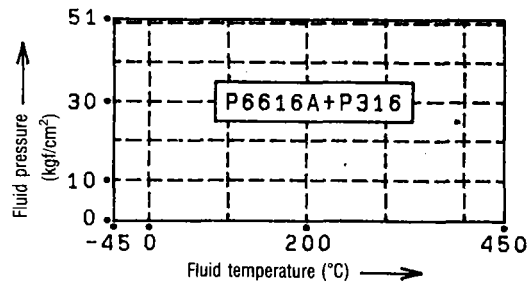
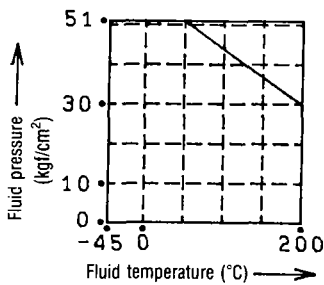
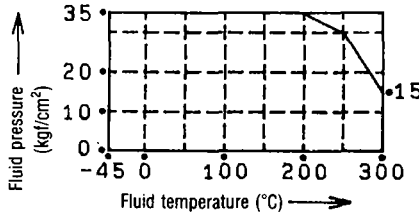


Fig. 2 Gasket operating Temperature-Pressure Limitation.

**Fig. 2-1 Reinforced Teflon
(VAL. 7020)**



**Fig. 2-2 Asbestos
(VAL. 1500AC)**



**Fig. 2-3 Pillarfoil
(P6631)**

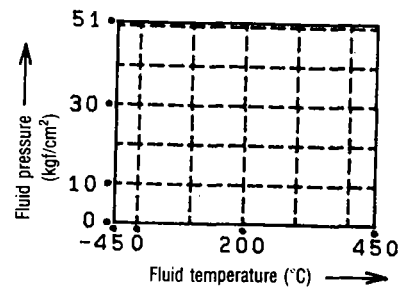
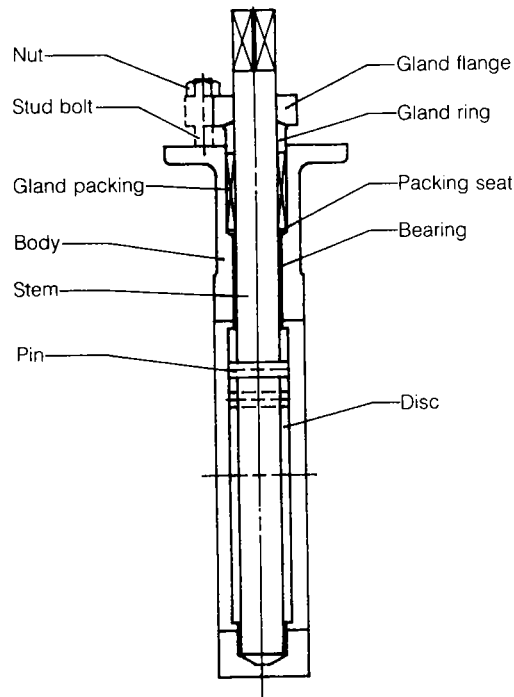
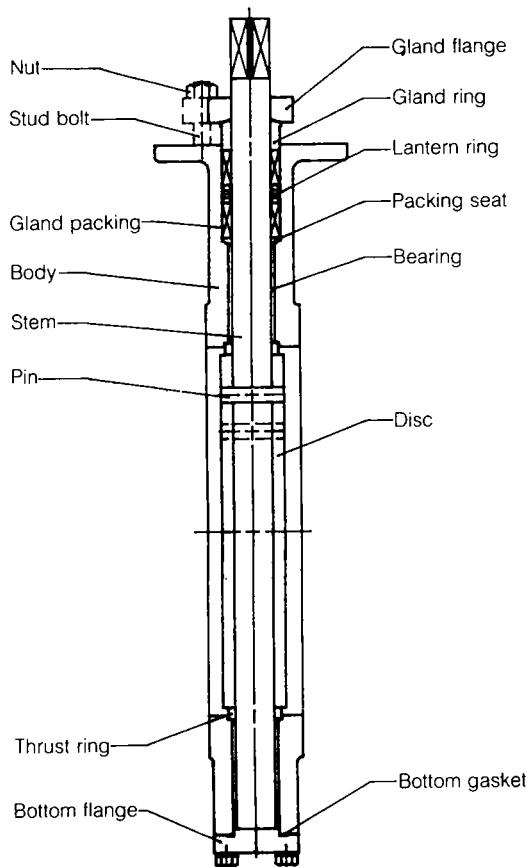


Fig. 3 Body Assembly Section View.

3" ~ 8" (80 ~ 250mm)



10" ~ 16" (250 ~ 400mm)



18" ~ 24" (450 ~ 600mm)

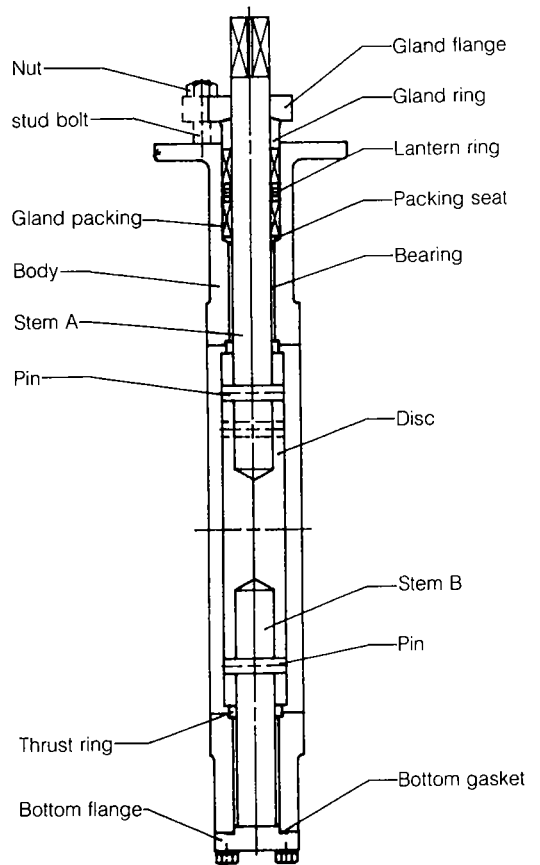


Table 3 Cv Valve.

Valve size inch (mm)	L Class Body		M Class Body		Valve size inch (mm)	L Class Body		M Class Body	
	60° Open	90° Open	60° Open	90° Open		60° Open	90° Open	60° Open	90° Open
3 (80)	125	265	110	240	12 (300)	2,470	5,100	2,220	4,600
4 (100)	230	480	210	430	14 (350)	3,290	6,860	2,960	6,170
5 (125)	360	750	325	670	16 (400)	4,300	8,960	3,870	8,060
6 (150)	650	1,350	585	1,210	18 (450)	5,440	11,340	4,900	10,400
8 (200)	1,120	2,310	1,000	2,100	20 (500)	6,720	14,000	6,050	12,600
10 (250)	1,810	3,740	1,630	3,350	24 (600)	9,670	20,160	8,700	18,200

Note: Unbalance force exerted on butterfly valves reaches its maximum at 75° rotation. For the total cost-effectiveness considering the actuator capacity, stem and disc strenght, etc., it is recommended that the valve be used with a maximum limit of 60° for throttling service.

Fig. 4 Flow Characteristics.

Fig. 4-1 L Class body flow characteristics.

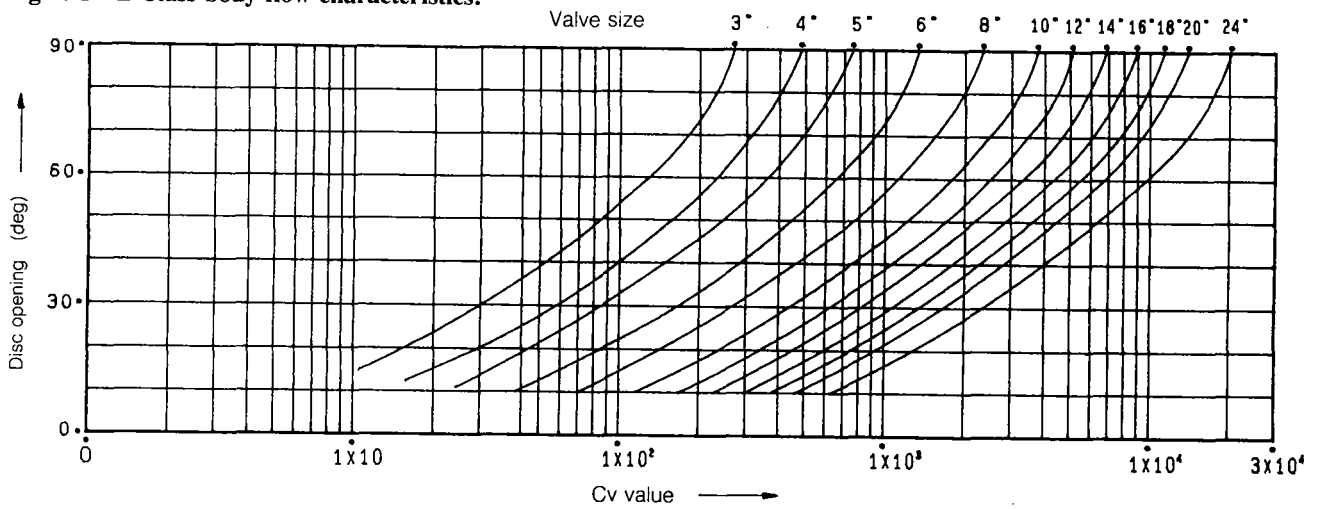


Fig. 4-2 M Class body flow characteristics.

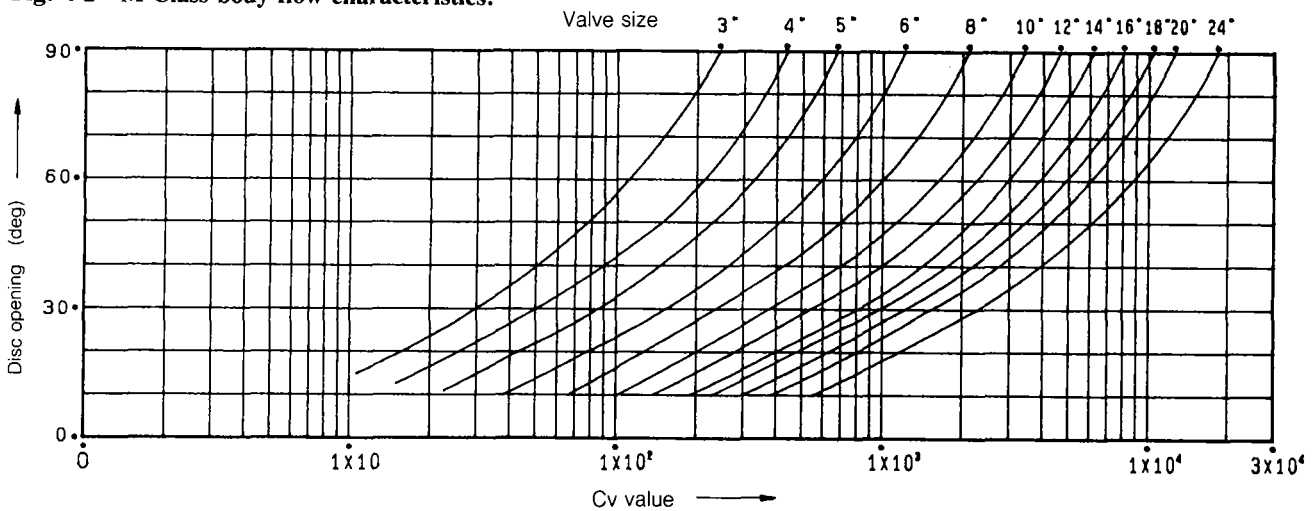


Table 4 Max Allowable Differential Pressure (unit: kgf/cm²).

ΔP: Allowable modulating differential pressure is for the case of 60° opening.

Table 4-1 Double acting pneumatic cylinder Actuator/Air supply 4.0 Kg/cm²G.

Table4-1A L Class Body.

Actuator Series Size		Body Rating		L Class Body: JIS10K, ANSI Class 150																										
				Packing		Teflon-asbestos (P4513+P4513L, P4513+P#2S)												Pillarfoil (P6616A+P316)												
		Valve size				3"	4"	5"	6"	8"	10"	12"	14"	16"	18"	20"	24"	3"	4"	5"	6"	8"	10"	12"	14"	16"	18"	20"	24"	
		Purpose	Stem	80	100	125	150	200	250	300	350	400	450	500	600	80	100	125	150	200	250	300	350	400	450	500	600			
6600RA (Double acting)	60	Shut-Off	630	19.0	16.1												19.0	13.3												
			316	19.0	16.1													19.0	13.3											
		Δ P	630	3.5	0.8													3.1	0.7											
			316	3.5	0.8													3.1	0.7											
		90	Shut-Off	630	19.0	19.0	19.0	19.0	10.6									19.0	19.0	19.0	19.0	9.4								
				316	19.0	19.0	19.0	15.6	10.6										19.0	19.0	19.0	14.4	9.4							
	Δ P	630	7.0	6.0	3.7	2.0	0.8										7.0	5.7	3.5	1.8	0.6									
		316	3.5	4.2	2.6	1.4	0.8										3.1	3.8	2.4	1.2	0.6									
	130	Shut-Off	630			19.0	19.0	19.0	18.9	12.3								19.0	19.0	19.0	17.7	11.5								
			316			19.0	15.6	14.2	16.1	10.6								19.0	14.4	12.9	15.2	9.8								
	Δ P	630			5.6	3.0	2.5	1.3	0.7								5.4	2.8	2.4	1.2	0.7									
		316			2.6	1.4	1.3	1.3	0.7								2.4	1.2	1.2	1.2	0.7									
6500RA (Double acting)	170	Shut-Off	630					19.0	19.0	19.0	15.2	10.8	8.2							19.0	19.0	19.0	14.5	10.2	7.6					
			316					16.1	10.6	13.5	12.0	10.8	8.2								15.2	9.8	12.7	11.2	10.2	7.6				
		Δ P	630					2.8	1.7	1.4	0.9	0.6	0.4								2.7	1.6	1.4	0.9	0.6	0.4				
			316					1.3	0.7	1.0	0.9	0.6	0.4								1.2	0.7	0.9	0.9	0.6	0.4				
		200	Shut-Off	630						19.0	19.0	18.9	14.3	8.0										19.0	19.0	18.3	13.7	7.4		
				316						13.5	12.0	12.9	9.7	8.0										12.7	11.2	12.2	9.1	7.4		
	Δ P	630							2.2	1.6	1.1	0.8	0.4									2.1	1.6	1.1	0.8	0.4				
		316							1.0	0.9	1.0	0.7	0.4									0.9	0.9	0.9	0.7	0.4				
	280	Shut-Off	630								19.0	19.0	19.0												19.0	19.0	19.0			
			316								12.9	9.7	10.2												12.2	9.1	9.6			
	Δ P	630									2.1	1.6	1.6												2.1	1.5	1.1			
		316									1.0	0.7	0.7												0.9	0.7	0.7			

Table 4-1B M Class Body.

Actuator Series Size		Body Rating		M Class Body: JIS20K, ANSI Class 300																									
				Packing		Teflon-asbestos (P4513+P4513L, P4513+P#2S)												Pillarfoil (P6616A+P316)											
		Valve size				3"	4"	5"	6"	8"	10"	12"	14"	16"	18"	20"	24"	3"	4"	5"	6"	8"	10"	12"	14"	16"	18"	20"	24"
		Purpose	Stem	80	100	125	150	200	250	300	350	400	450	500	600	80	100	125	150	200	250	300	350	400	450	500	600		
6600RA (Double acting)	60	Shut-Off	630	25.5	16.1												21.0	13.3											
			316	25.5	16.1													21.0	13.3										
		Δ P	630	3.0	0.9													2.3	0.8										
			316	3.0	0.9													2.3	0.8										
		90	Shut-Off	630	51.0	51.0	29.3											51.0	51.0	25.6									
				316	51.0	34.5	29.3											50.1	31.7	25.6									
	Δ P	630	7.0	6.0	3.2											7.0	5.7	2.7											
		316	7.0	4.2	3.2											7.0	3.8	2.7											
	130	Shut-Off	630		51.0	51.0	51.0	25.0	13.9									51.0	51.0	51.0	22.5	12.2							
			316		34.5	39.2	28.0	25.0	13.9									31.7	35.6	25.3	22.5	12.2							
	Δ P	630		7.0	7.0	6.5	2.5	1.2									7.0	7.0	6.2	2.2	1.1								
		316		7.0	5.4	3.4	2.5	1.2									3.8	4.9	3.1	2.2	1.1								
6500RA (Double acting)	170	Shut-Off	630				51.0	43.3	25.3	14.0	11.1	8.8	7.1							51.0	41.6	24.0	12.3	9.7	7.7	6.3			
			316				42.0	23.5	25.3	14.0	11.1	8.8	7.1							39.5	21.8	24.0	12.3	9.7	7.7	6.3			
		Δ P	630				7.0	3.7	2.1	1.2	0.9	0.6	0.4							7.0	3.5	2.0	1.0	0.7	0.5	0.4			
			316				5.7	2.6	2.1	1.2	0.9	0.6	0.4							4.8	2.4	2.0	1.0	0.7	0.5	0.4			
		200	Shut-Off	630				50.5	44.1	24.8	19.7	15.7	12.8	8.1							48.9	42.7	23.1	18.4	14.6	11.9	7.4		
				316				23.5	30.0	24.8	19.7	15.7	12.8	8.1							21.8	28.6	23.1	18.4	14.6	11.9	7.4		
	Δ P	630				5.6	3.7	2.3	1.6	1.2	0.9	0.5								5.4	3.6	2.1	1.5	1.1	0.8	0.4			
		316				2.6	3.3	2.3	1.6	1.2	0.9	0.5								2.4	3.1	2.1	1.5	1.1	0.8	0.4			
	280	Shut-Off	630						51.0	51.0	49.5	39.3	32.0	20.4							51.0	51.0	48.2	38.2	31.1	19.8			
			316						30.0	31.6	25.1	20.0	16.2	14.0							28.6	29.9	23.8	18.9	15.3	13.3			
	Δ P	630							7.0	5.8	4.2	3.0	2.2	1.3						7.0	5.6	4.0	2.9	2.2	1.3				
		316							3.3	3.8	2.7	2.0	1.4	1.2						3.1	3.6	2.6	1.9	1.4	1.1				

Table 4-2 Spring return pneumatic cylinder Actuator/Air Supply 4.0 kgf/cm²G

Table 4-2A L Class Body.

Body Rating			L Class Body: JIS10K, ANSI Class 150																											
Actuator Series Size	Purpose	Stem	Teflon-asbestos (P4513 + P4513L, P4513 + P#2S)												Pillarfoil (P6616A + P316)															
			3"		4"		5"		6"		8"		10"		12"		14"		16"		18"		20"		24"					
			80	100	125	150	200	250	300	350	400	450	500	600	80	100	125	150	200	250	300	350	400	450	500	600				
6500RA (Spring return)	60	Shut-Off	630																											
		316																												
	Δ P	630																												
		316																												
	90	Shut-Off	630	19.0	19.0	14.2													19.0	17.2	12.2									
			316	19.0	19.0	14.2													19.0	17.2	12.2									
		Δ P	630	4.9	2.2	1.0													4.5	1.9	0.9									
			316	3.5	2.2	1.0													3.1	1.9	0.9									
	130	Shut-Off	630	19.0	19.0	19.0	19.0	10.9											19.0	19.0	19.0	19.0	9.7							
			316	19.0	19.0	19.0	15.6	10.9											19.0	19.0	19.0	14.4	9.7							
		Δ P	630	7.0	7.0	4.4	2.3	0.9											7.0	6.9	4.2	2.2	0.8							
			316	3.5	4.2	2.6	1.3	0.9											3.1	3.8	2.4	1.2	0.8							
6600RA (Spring return)	200	Shut-Off	630				19.0	19.0	19.0	16.9	11.0									19.0	19.0	19.0	16.0	10.2						
			316				15.6	14.2	16.1	10.6	11.0										14.4	12.9	15.2	9.8	10.2					
		Δ P	630				3.0	2.8	1.9	1.1	0.8										2.8	2.7	1.8	1.1	0.7					
			316				1.3	1.3	1.3	0.7	0.8										1.2	1.1	1.2	0.8	0.7					
	280	Shut-Off	630					19.0	19.0	19.0	17.4	12.4	9.4	5.2								19.0	19.0	19.0	16.7	11.8	8.8	4.6		
			316					16.1	10.6	13.5	12.0	12.4	9.4	5.2								15.2	9.8	12.7	11.2	11.8	8.8	4.6		
		Δ P	630					2.8	1.6	2.0	1.3	0.9	0.6	0.3								2.7	1.6	1.9	1.2	0.8	0.6	0.3		
			316					1.3	0.7	1.0	0.9	0.9	0.6	0.3								1.2	0.8	0.9	0.9	0.8	0.6	0.3		
	360	Shut-Off	630								19.0	19.0	19.0	10.8												19.0	19.0	18.5	10.2	
			316								12.0	12.9	9.7	10.8												11.2	12.2	9.1	9.6	
		Δ P	630									2.0	1.8	1.3	0.7												2.0	1.8	1.3	0.7
			316									0.9	1.0	0.7	0.7												0.9	0.9	0.7	0.7

Table 4-2B M Class Body.

Body Rating			M Class Body: JIS20K, ANSI Class 300																										
Actuator Series Size	Purpose	Stem	Teflon-asbestos (P4513 + P4513L, P4513 + P#2S)												Pillarfoil (P6616A + P316)														
			3"		4"		5"		6"		8"		10"		12"		14"		16"		18"		20"		24"				
			80	100	125	150	200	250	300	350	400	450	500	600	80	100	125	150	200	250	300	350	400	450	500	600			
6600RA (Spring return)	60	Shut-Off	630																										
		316																											
	Δ P	630																											
		316																											
	90	Shut-Off	630	31.6	20.7																27.1	17.2							
			316	31.6	20.2																27.1	17.2							
		Δ P	630	4.3	2.2																3.6	1.5							
			316	4.3	2.2																3.6	1.5							
	130	Shut-Off	630	51.0	51.0	30.0	21.5														51.0	51.0	26.4	18.9					
			316	51.0	34.5	30.0	21.5														50.1	31.7	26.4	18.9					
		Δ P	630	7.0	7.0	3.8	2.4														7.0	6.9	3.3	2.1					
			316	7.0	4.2	3.8	2.4														7.0	3.8	3.3	2.1					
6500RA (Spring return)	200	Shut-Off	630			51.0	51.0	34.3	19.1												51.0	51.0	32.0	17.5					
			316			39.2	28.0	34.3	19.1													35.5	25.3	32.0	17.5				
		Δ P	630			7.0	7.0	3.9	1.9													7.0	7.0	3.6	1.8				
			316			5.4	3.4	3.9	1.9													4.9	3.0	3.6	1.8				
	280	Shut-Off	630				51.0	49.5	29.0	16.1	12.8	10.2										51.0	47.8	27.6	14.4	11.5	9.1		
			316				42.0	23.5	29.0	16.1	12.8	10.2										39.6	21.8	27.6	14.4	11.5	9.1		
		Δ P	630				7.0	5.1	3.0	1.8	1.3	0.9										7.0	4.9	2.8	1.6	1.1	0.8		
			316				5.1	2.6	3.0	1.8	1.3	0.9										4.8	2.4	2.8	1.6	1.1	0.8		
	360	Shut-Off	630						51.0	33.5	26.6	21.1	17.2	10.9									51.0	31.7	25.4	20.0	16.3	10.2	
			316						30.0	31.6	25.1	20.0	16.2	10.9									28.6	29.9	23.8	18.9	15.3	10.2	
		Δ P	630							6.1	3.7	2.7	1.9	1.4	0.8								5.9	3.5	2.5	1.8	1.4	0.8	
			316							3.3	3.7	2.7	1.9	1.4	0.8								3.1	3.5	2.5	1.8	1.4	0.8	

Table 4-3 Solid state electronic (3500RB, 3600RA) & electronic motor (3400RA) actuator.

Table 4-3A L Class Body.

Actuator Series Size	Body Rating		L Class Body: JIS10K, ANSI Class 150																											
	Packing		Teflon-asbestos (P4513 + P4513L, P4513 + P #2S)														Pillarfoil (P6616A + P316)													
	Valve size		3"	4"	5"	6"	8"	10"	12"	14"	16"	18"	20"	24"	3"	4"	5"	6"	8"	10"	12"	14"	16"	18"	20"	24"				
	Purpose	Stem	80	100	125	150	200	250	300	350	400	450	500	600	80	100	125	150	200	250	300	350	400	450	500	600				
35A2RB	Shut-Off	630	19.0	18.2												19.0	15.4													
		316	19.0	18.2												19.0	15.4													
36A2RA	Δ P	630	4.8	2.0												4.4	1.8													
		316	3.5	2.0												3.1	1.8													
35B1RB	Shut-Off	630	19.0	19.0	19.0	17.6										19.0	19.0	19.0	16.4											
		316	19.0	19.0	19.0	15.6										19.0	19.0	19.0	14.4											
36B1RA	Δ P	630	7.0	4.7	2.9	1.5										7.0	4.4	2.7	1.4											
		316	3.5	4.2	2.6	1.3										3.1	3.8	2.4	1.2											
35B2RB	Shut-Off	630		19.0	19.0	19.0	14.0									19.0	19.0	19.0	12.8											
		316		19.0	19.0	15.6	14.0									19.0	19.0	14.4	12.8											
36B2RA	Δ P	630		7.0	5.6	3.0	1.3									7.0	5.4	2.8	1.1											
		316		4.2	2.6	1.3	1.3									3.8	2.4	1.2	1.1											
35C1RB	Shut-Off	630					19.0	12.5											19.0	11.4										
		316					14.2	12.5											12.9	11.4										
36C1RA	Δ P	630					2.0	1.0											1.8	0.9										
		316					1.3	1.0											1.1	0.9										
36C2RA	Shut-Off	630					19.0	19.0	14.1	9.2									19.0	19.0	13.3	8.4								
		316					14.2	16.1	10.6	9.2									12.9	15.2	9.8	8.4								
34C2RA	Δ P	630					2.8	1.7	1.0	0.7									2.7	1.6	0.9	0.6								
		316					1.3	1.3	0.7	0.7									1.1	1.2	0.7	0.6								
35C3RB	Shut-Off	630						19.0	17.1	11.2	6.7								19.0	16.3	10.4	6.0								
		316						16.1	10.6	11.2	6.7								15.2	9.8	10.4	6.0								
36C3RA	Δ P	630							2.1	1.2	0.8	0.5							2.0	1.2	0.8	0.4								
		316							1.3	0.7	0.8	0.5							1.2	0.7	0.8	0.4								
36D1RA	Shut-Off	630							19.0	19.0	11.7	8.3								19.0	18.3	11.0	7.7							
		316							10.6	13.5	11.7	8.3								9.8	12.7	11.0	7.7							
34D1RA	Δ P	630								1.7	1.4	0.9	0.6							1.6	1.4	0.9	0.6							
		316								0.7	1.0	0.9	0.6							0.7	0.9	0.9	0.6							

Table 4-3B M Class body.

Actuator Series Size	Body Rating		M Class Body: JIS20K, ANSI Class 300																											
	Packing		Teflon-asbestos (P4513 + P4513L, P4513 + P #2S)														Pillarfoil (P6616A + P316)													
	Valve size		3"	4"	5"	6"	8"	10"	12"	14"	16"	18"	20"	24"	3"	4"	5"	6"	8"	10"	12"	14"	16"	18"	20"	24"				
	Purpose	Stem	80	100	125	150	200	250	300	350	400	450	500	600	80	100	125	150	200	250	300	350	400	450	500	600				
35B1RB	Shut-Off	630	51.0	39.0	17.7	12.6										51.0	36.1	14.1	10.1											
		316	51.0	34.5	17.7	12.6										50.1	31.7	14.1	10.1											
36B1RA	Δ P	630	7.0	4.7	2.4	1.5										7.0	4.4	1.9	1.2											
		316	7.0	4.2	2.4	1.5										7.0	3.8	1.9	1.2											
35B2RB	Shut-Off	630	51.0	51.0	38.7	27.6										51.0	51.0	35.1	25.0											
		316	51.0	34.5	38.7	27.6										50.1	31.7	35.1	25.0											
36B2RA	Δ P	630	7.0	7.0	5.3	3.3										7.0	7.0	4.8	3.0											
		316	7.0	4.2	5.3	3.3										7.0	3.8	4.8	3.0											
35C1RB	Shut-Off	630			51.0	42.7	16.3											51.0	40.0	13.9										
		316			39.2	28.0	16.3											35.5	25.3	13.9										
36C1RA	Δ P	630			7.0	5.2	2.0											7.0	4.8	1.7										
		316			5.4	3.4	2.0											4.9	3.0	1.7										
36C2RA	Shut-Off	630			51.0	28.6	16.0												51.0	26.2	14.3									
		316			28.0	28.6	16.0												25.3	26.2	14.3									
34C2RA	Δ P	630			7.0	3.5	1.7											7.0	3.2	1.5										
		316			3.4	3.5	1.7											3.0	3.2	1.5										
35C3RB	Shut-Off	630					34.8	19.5	11.2										32.4	17.8	9.8									
		316					34.8	19.5	11.2										32.4	17.8	9.8									
36C3RA	Δ P	630					4.3	2.1	1.2									4.0	1.9	1.0										
		316					4.3	2.1	1.2									4.0	1.9	1.0										
36D1RA	Shut-Off	630					51.0	33.5	19.5	10.6	8.4	6.7							51.0	31.8	18.1	8.9	7.0	5.6						
		316					42.0	23.5	19.5	10.6	8.4	6.7							39.5	21.8	18.1	8.9	7.0	5.6						
34D1RA	Δ P	630					7.0	3.7	2.1	1.2	0.9	0.6							7.0	3.5	2.0	1.0	0.7	0.5						
		316					5.1	2.6	2.1	1.2	0.9	0.6							4.8	2.4	2.0	1.0	0.7	0.5						

Table 4-4 Diaphragm actuator (5200LA).

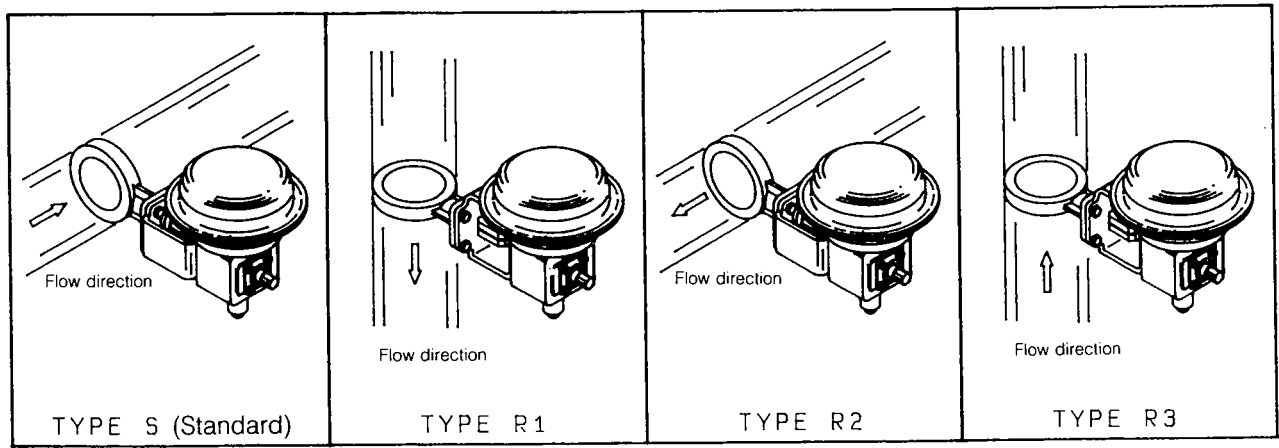
Table 4-4A L Class Body.

Actuator size	Air Supply (off Balance)	Spring range kgf/cm ² G	Body Rating		L Class Body: JIS10K, ANSI Class 150																									
			Purpose	Stem	Packing		Teflon-asbestos (P4513+P4513L, P4513+P#2S)										Pillarfoil (P6616A+P316)													
					Valve size		3"	4"	5"	6"	8"	10"	12"	14"	16"	18"	3"	4"	5"	6"	8"	10"	12"	14"	16"	18"				
					80	100	125	150	200	250	300	350	400	450	80	100	125	150	200	250	300	350	400	450						
218	3.0(0.8)	0.8~2.0	Shut-Off	630	18.8	7.7																	15.4	4.9						
				316	18.8	7.7																		15.4	4.9					
			Δ P	630	0.8	0.3																			0.4	—				
				316	0.8	0.3																			0.4	—				
	3.4(1.2)	RA 1.2~3.0 DA 0.8~2.0	Shut-Off	630	19.0	12.9																		19.0	10.1					
				316	19.0	12.9																		19.0	10.1					
Δ P	630	0.8	0.3																				0.4	—						
		316	0.8	0.3																			0.4	—						
270	3.0(0.8)	0.8~2.0	Shut-Off	630	19.0	19.0	16.3	10.4																19.0	19.0	14.3	9.1			
				316	19.0	19.0	16.3	10.4																	19.0	19.0	14.3	9.1		
			Δ P	630	2.7	1.1	0.7	0.4																		2.3	0.8	0.5	0.2	
				316	2.7	1.1	0.7	0.4																		2.3	0.8	0.5	0.2	
	3.4(1.2)	RA 1.2~3.0 DA 0.8~2.0	Shut-Off	630			19.0	16.3																	19.0	15.0				
				316			19.0	15.6																		19.0	14.4			
Δ P	630		1.2	0.6																				0.9	0.5					
		316		1.2	0.6																			0.9	0.5					
350	3.0(0.8)	0.8~2.0	Shut-Off	630			19.0	19.0	9.9																19.0	19.0	8.7			
				316			19.0	15.6	9.9																	19.0	14.4	8.7		
			Δ P	630			2.0	1.0	0.3																		1.8	0.9	0.2	
				316			2.0	1.0	0.3																		1.8	0.9	0.2	
450	3.0(0.8)	0.8~2.0	Shut-Off	630					19.0	19.0	14.2															19.0	19.0	13.4		
				316					14.2	16.1	10.6																13.0	15.2	9.8	
			Δ P	630					1.3	0.7	0.4																	1.2	0.6	0.3
				316					1.3	0.7	0.4																	1.2	0.6	0.3

Table 4-4B M Class Body.

Actuator size	Air Supply (Off-Balance)	Spring range kgf/cm ² G	Body Rating		M Class Body: JIS20K, ANSI Class 300																												
			Purpose	Stem	Packing		Teflon-asbestos (P4513+P4513L, P4513+P#2S)										Pillarfoil (P6616A+P316)																
					Valve size		3"	4"	5"	6"	8"	10"	12"	14"	16"	18"	3"	4"	5"	6"	8"	10"	12"	14"	16"	18"							
					80	100	125	150	200	250	300	350	400	450	80	100	125	150	200	250	300	350	400	450									
270	3.0(0.8)	0.8~2.0	Shut-off	630	36.4	23.0																			32.0	20.2							
				316	23.1	23.0																				32.0	20.2						
			Δ P	630	2.2	1.1																					1.6	0.8					
				316	1.1	1.1																					1.6	0.8					
	3.4(1.2)	RA 1.2~3.0 DA 0.8~2.0	Shut-off	630	51.0	35.9																				51.0	33.0						
				316	34.5	34.5																					50.1	31.7					
Δ P	630		3.6	1.9																					3.0	1.6							
		316		3.6	1.9																				3.0	1.6							
350	3.0(0.8)	0.8~2.0	Shut-off	630	51.0	51.0	27.4	19.6																		51.0	51.0	23.7	16.9				
				316	34.5	34.5	27.4	19.6																			50.1	31.7	23.7	16.9			
			Δ P	630	6.1	3.2	1.6	0.9																				5.4	2.9	1.0	0.6		
				316	3.2	3.2	1.6	0.9																				5.4	2.9	1.0	0.6		
450	3.0(0.8)	0.8~2.0	Shut-off	630			51.0	51.0	28.9	16.1	9.1																51.0	51.0	26.4	14.4	7.7		
				316			39.2	28.0	28.9	16.1	9.1																	35.6	25.4	26.4	14.4	7.7	
			Δ P	630			5.7	3.6	1.3	0.6	0.3																		5.2	3.2	1.0	0.4	0.2
				316			5.4	3.4	1.3	0.6	0.3																		4.9	3.0	1.0	0.4	0.2

Fig. 5 Actuator mounting form (In case of Model 5200RA).



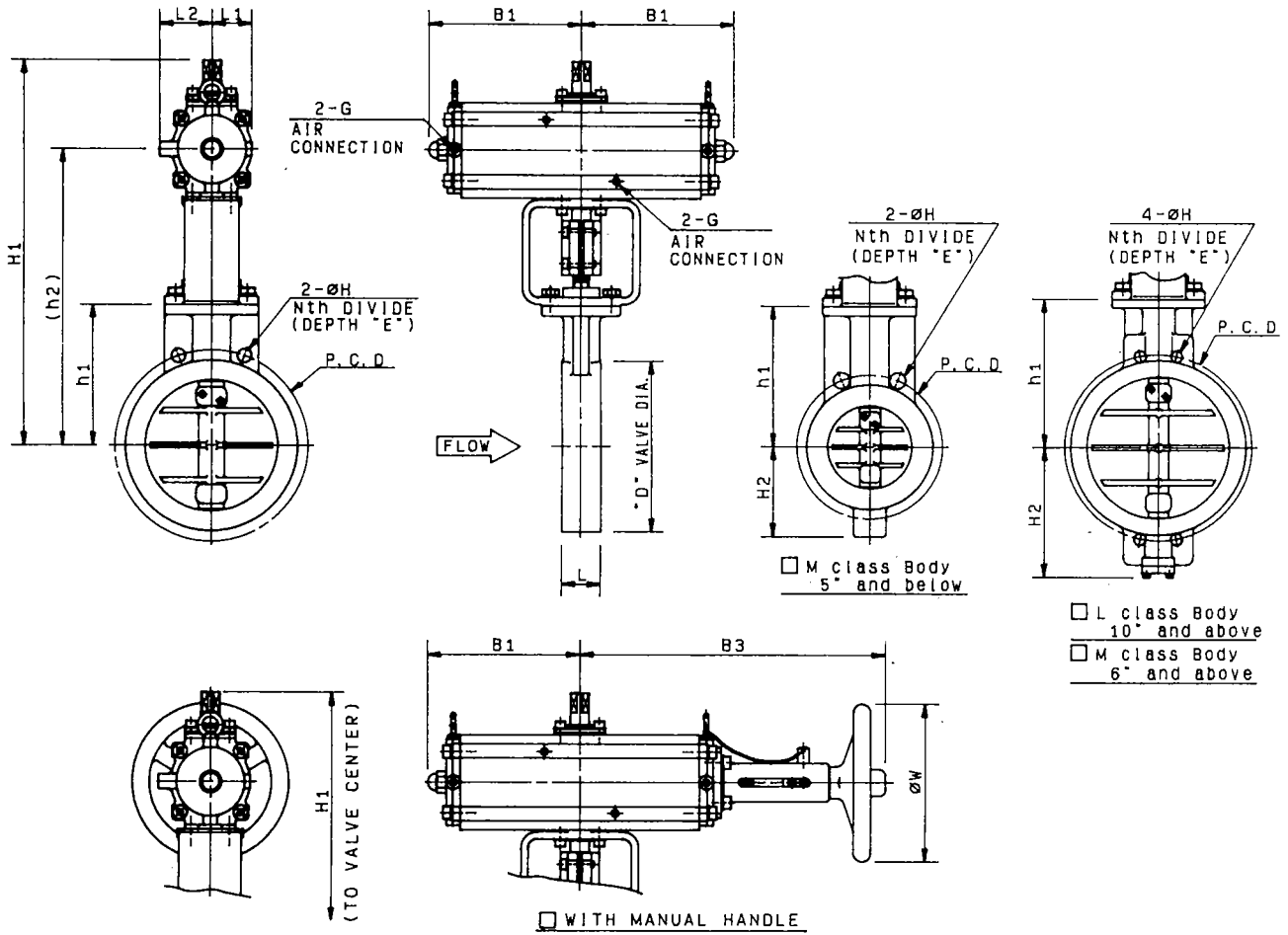
Note: Unless otherwise specified, TYPE S is automatically applied.

Table 5 Net Weight of Standard Valve and Actuator Combined. (Unit: kg)

Only standard types are represented. Weights of accessories, a handwheel and the like are not included.

Body Class	Actuator Size		Valve Size														
			3"	4"	5"	6"	8"	10"	12"	14"	16"	18"	20"	24"			
			80	100	125	150	200	250	300	350	400	450	500	600			
L Class Body: JIS10K, ANSI Class 150	Double Acting	6600RA	60	12	14												
			90	16	18	24	27	31									
			130			29	32	36	50	69							
		6500RA	170						108	127	136	175	204	232			
			200								185	225	254	282	455		
			280										390	420	560		
	Spring Return	6600RA	60														
			90	21	23	29											
			130	39	41	47	50	54									
		6500RA	200					170	185	205	220						
			280						310	330	345	395	418	437	580		
			360									640	660	680	825		
	Diaphragm Actuator 5200RA	218	29	31													
		270	39	41	47	50											
		350			82	85	90										
		450						133	148	165							
35A2RB, 36A2RA, 34A2RA			16	18													
35B1RB, 36B1RA, 34B1RA			21	23	29	32	37										
35B2RB, 36B2RA, 34B2RA																	
35C1RB, 36C1RA, 34C1RA																	
36C2RA, 34C2RA						64	78	96	105	145							
35C2RB, 36C3RA, 34C3RA																	
36D1RA, 34D1RA									185	195	235	264					
M Class Body: JIS20K, ANSI Class 300	Double Acting	6600RA	60	20	23												
			90	24	27	34											
			130		32	39	52	65	105								
		6500RA	170					124	163	187	235	315	364	430			
			200						213	237	285	365	414	480	660		
			280								377	425	505	554	620	800	
	Spring Return	6600RA	60														
			90	29	32												
			130	47	50	57	70										
		6500RA	200					178	235								
			280					328	365	397	445	535	579				
			360								690	780	824	883	1075		
	Diaphragm Actuator 5200RA	218															
		270	47	50													
		350	82	85	92	105	120										
		450			137	150	165	205	225								
35A2RB, 36A2RA, 34A2RA																	
35B1RB, 36B1RA, 34B1RA			29	32	39	52											
35B2RB, 36B2RA, 34B2RA																	
35C1RB, 36C1RA, 34C1RA																	
36C2RA, 34C2RA					67	80	95	133	153								
35C2RB, 36C3RA, 34C3RA																	
36D1RA, 34D1RA							184	223	247	295	375	424					

BUTTERFLY VALVE 600B Double acting cylinder



DIMENSIONS

UNIT: mm

VALVE SIZE CODE No.	L Class Body						M Class Body						ACTUATOR							
	□ JIS10k			□ ANSI Class 150			□ JIS20k			□ ANSI Class 300			Cylinder size	B1	L1	L2	G	□ WITH MANUAL HANDLE		CODE No.
	L	h1	H2	D	h2	H1	L	h1	H2	D	h2	H1						B3	W	
03 □ 3" (80A)	46	137	—	133	295	385	64	162	120	135	325	415	□ 60	155	38	55	RC1/8	305	140	6606RA
					315	425					345	455								
04 □ 4" (100A)	52	160	—	155	320	410	64	172	130	160	355	445	□ 60	155	38	55	RC1/8	305	140	6606RA
					335	450					395	465								
05 □ 5" (125A)	56	170	—	187	350	465	70	220	140	195	430	545	□ 90	200	55	70	RC1/8	395	140	6609RA
					395	545					470	620								
06 □ 6" (150A)	56	185	—	216	365	480	76	230	205	230	—	—	□ 90	200	55	70	RC1/8	395	140	6609RA
					410	560					480	630								
08 □ 8" (200A)	60	220	—	266	430	545	89	290	255	275	—	—	□ 90	200	55	70	RC1/8	395	140	6609RA
					470	620					555	705								
10 □ 10" (250A)	68	280	235	330	530	680	114	306	270	350	570	720	□ 130	270	75	100	RC1/4	530	300	6613RA
12 □ 12" (300A)	78	320	320	375	585	735	—	—	—	—	—	—	□ 130	270	75	100	RC1/4	530	300	6613RA

VALVE SIZE	JIS 10k				JIS 20k				ANSI Class 150				ANSI Class 300			
	P.C.D	N	H	E	P.C.D	N	H	E	P.C.D	N	H	E	P.C.D	N	H	E
3" (80A)	□ 150	8	19	—	□ 160	8	23	—	□ 190.5	8	19	—	□ 168.1	8	22	—
4" (100A)	□ 175	8	19	—	□ 185	8	23	—	□ 190.5	8	19	—	□ 200.2	8	22	—
5" (125A)	□ 210	8	23	—	□ 225	8	25	—	□ 215.9	8	22	—	□ 235	8	22	—
6" (150A)	□ 240	8	23	—	□ 260	12	M22	20	□ 241.3	8	22	—	□ 269.7	12	22	—
8" (200A)	□ 290	12	23	—	□ 305	12	M22	28	□ 298.4	8	22	—	□ 330.2	12	25	—
10" (250A)	□ 355	12	25	—	□ 380	12	27	—	□ 362	12	25	—	□ 387.4	16	UNC 1	24
12" (300A)	□ 400	16	25	—	□	—	—	—	□ 431.8	12	25	—	□	—	—	—

NOTE:

DRAWING No.

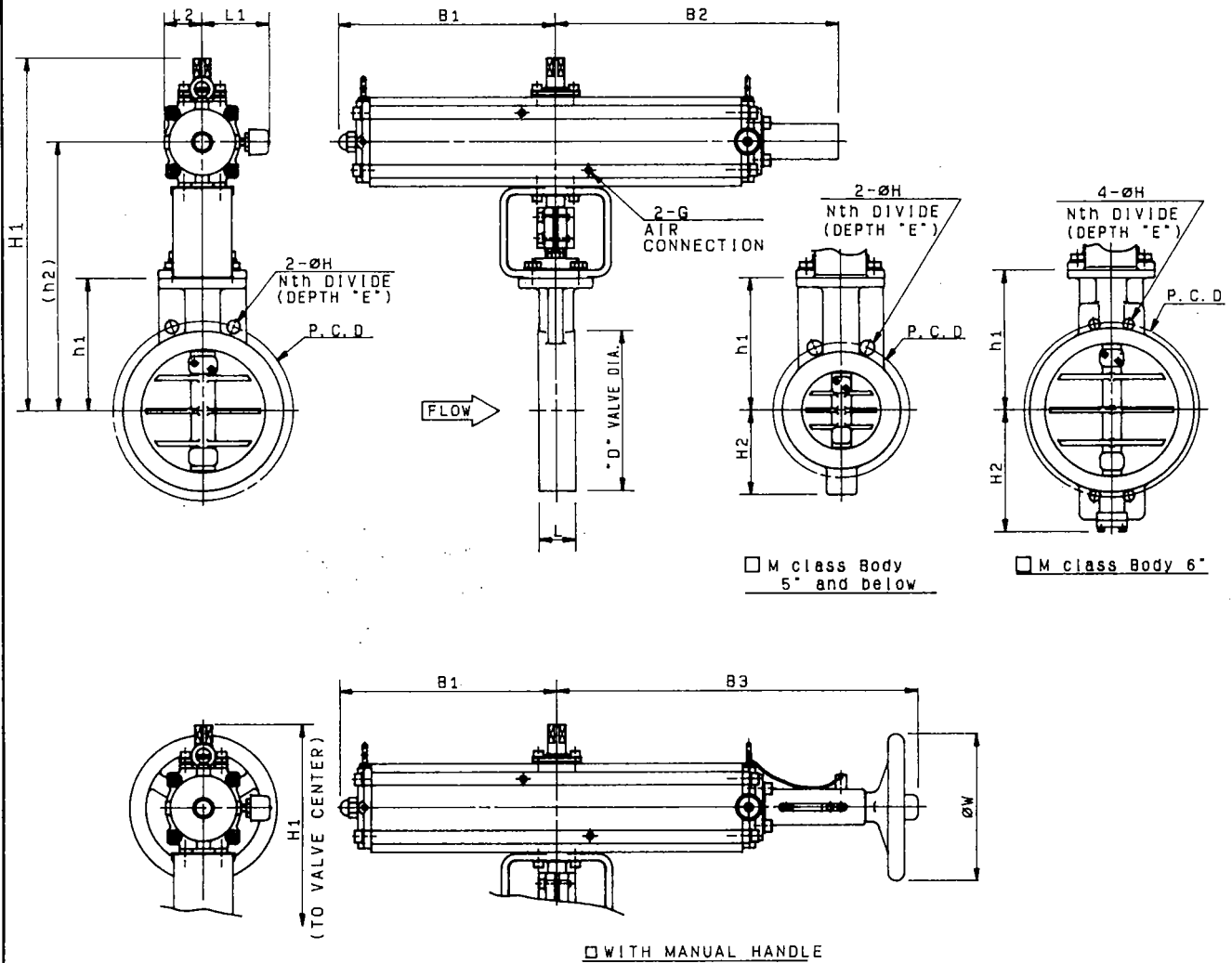
E-600B-6600RA-W-N
S

REV

A

KOSO

BUTTERFLY VALVE 600B Spring return cylinder



DIMENSIONS

UNIT: mm

VALVE SIZE CODE No.	L Class Body		M Class Body				ACTUATOR														
	□ JIS10k □ ANSI Class 150		□ JIS20k □ ANSI Class 300				Cylinder size	B1	B2	L1	L2	G	□ WITH MANUAL HANDLE		CODE No.						
	L	h1	H2	D	h2	H1							L	h1		H2	D	h2	H1	B3	W
03 □ 3" (80A)	46	137	—	133	315	445	64	162	120	135	345	475	□ 90	290	375	95	55	RC1/8	480	140	6609RA
					355	505					385	535	□ 130	395	500	115	75	RC1/4	655	300	6613RA
04 □ 4" (100A)	52	160	—	155	335	470	64	172	130	160	355	485	□ 90	290	375	95	55	RC1/8	480	140	6609RA
					380	530					395	545	□ 130	395	500	115	75	RC1/4	655	300	6613RA
05 □ 5" (125A)	56	170	—	187	350	485	70	220	140	195	—	—	□ 90	290	375	95	55	RC1/8	480	140	6609RA
					395	545					470	620	□ 130	395	500	115	75	RC1/4	655	300	6613RA
06 □ 6" (150A)	56	185	—	216	410	560	76	230	205	230	480	630	□ 130	395	500	115	75	RC1/4	655	300	6609RA
08 □ 8" (200A)	60	220	—	266	470	620	—	—	—	—	—	—	□ 130	395	500	115	75	RC1/4	655	300	6613RA

VALVE SIZE	JIS 10k				JIS 20k				ANSI Class 150				ANSI Class 300			
	P.C.D	N	H	E	P.C.D	N	H	E	P.C.D	N	H	E	P.C.D	N	H	E
3" (80A)	□ 150	8	19		□ 180	8	23		□ 190.5	8	19		□ 200.2	8	22	
4" (100A)	□ 175	8	19		□ 185	8	23		□ 190.5	8	19		□ 200.2	8	22	
5" (125A)	□ 210	8	23		□ 225	8	25		□ 215.9	8	22		□ 235	8	22	
6" (150A)	□ 240	8	23		□ 260	12	M22	20	□ 241.3	8	22		□ 269.7	12	22	
8" (200A)	□ 290	12	23		□				□ 298.4	8	22		□			

NOTE:

DRAWING No.

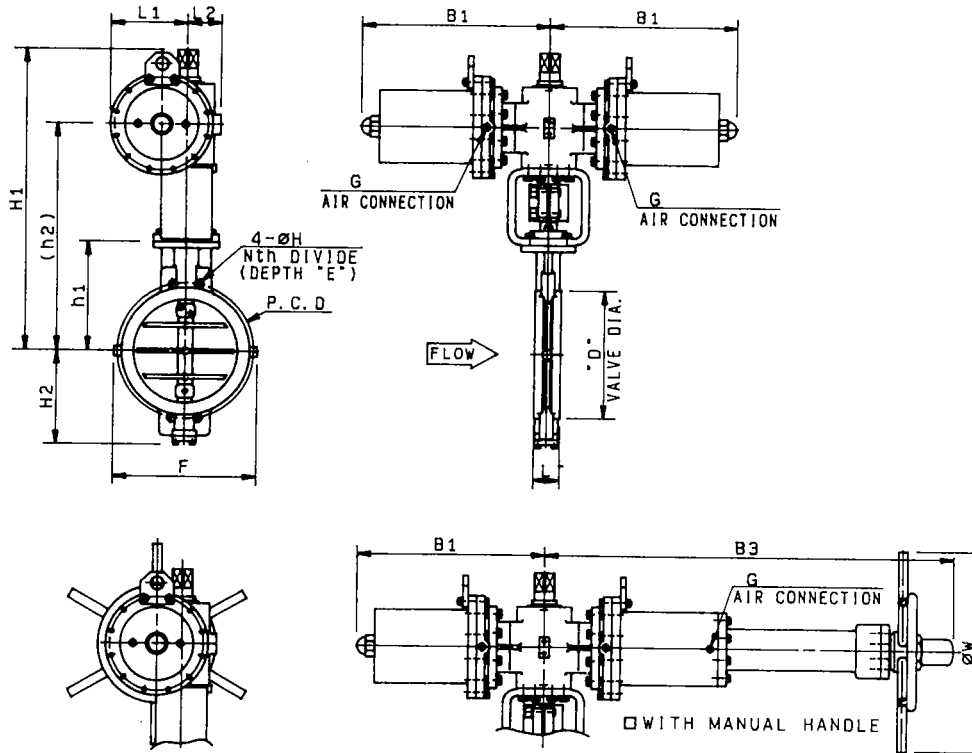
E-600B-6600RA-D-N
R-S

REV

A

KOSO

BUTTERFLY VALVE 600B Double acting cylinder



DIMENSIONS

UNIT: mm

VALVE SIZE CODE No.	L Class Body								M Class Body								ACTUATOR								
	□ JIS10k				□ ANSI Class 150				□ JIS20k				□ ANSI Class 300				Cylinder size	B1	L1	L2	G	□ WITH MANUAL HANDLE			
	L	h1	H2	D	F	h2	H1	L	h1	H2	D	F	h2	H1	size	B1						L1	L2	G	B3
08 □ 8" (200A)	—	—	—	—	—	—	—	89	290	255	275	—	595	830	□ 170	440	205	90	RC3/8	1015	—	400	6517RA		
10 □ 10" (250A)	68	280	235	330	—	575	810	114	306	270	350	—	610	845	□ 170	440	205	90	RC3/8	1015	—	400	6517RA		
						625	860						725	960	□ 200	555	230	100	RC1/2	1210	—	590	6520RA		
12 □ 12" (300A)	78	320	280	375	—	—	—	114	410	370	400	—	755	1030	□ 170	440	205	90	RC3/8	1015	—	400	6517RA		
						—	—						785	1030	□ 200	555	230	100	RC1/2	1210	—	590	6520RA		
						—	—						830	1160	□ 280	675	290	130	RC1/2	1620	196	590	6528RA		
14 □ 14" (350A)	78	365	325	416	500	—	—	127	435	395	445	560	785	1020	□ 170	440	205	90	RC3/8	1015	—	400	6517RA		
						670	905						830	1105	□ 200	555	230	100	RC1/2	1210	—	590	6520RA		
						—	—						885	1215	□ 280	675	290	130	RC1/2	1620	—	590	6528RA		
16 □ 16" (400A)	102	395	355	480	540	—	—	140	455	415	505	600	805	1040	□ 170	440	205	90	RC3/8	1015	—	400	6517RA		
						710	945						850	1125	□ 200	555	230	100	RC1/2	1210	—	590	6520RA		
						740	1015						905	1235	□ 280	675	290	130	RC1/2	1620	196	590	6528RA		
18 □ 18" (450A)	114	425	370	528	610	—	—	152	480	440	560	660	830	1065	□ 170	440	205	90	RC3/8	1015	—	400	6517RA		
						740	975						875	1150	□ 200	555	230	100	RC1/2	1210	—	590	6520RA		
						845	1175						930	1260	□ 280	675	290	130	RC1/2	1620	—	590	6528RA		
20 □ 20" (500A)	127	460	405	580	650	—	—	152	500	460	615	720	850	1085	□ 170	440	205	90	RC3/8	1015	—	400	6517RA		
						775	1010						895	1170	□ 200	555	230	100	RC1/2	1210	—	590	6520RA		
						805	1080						950	1280	□ 280	675	290	130	RC1/2	1620	196	590	6528RA		
						880	1210						1015	1290	□ 200	555	230	100	RC1/2	1210	—	590	6520RA		
24 □ 24" (600A)	130	560	490	685	740	—	—	154	617	565	720	820	1070	1400	□ 280	675	290	130	RC1/2	1620	196	590	6528RA		
						955	1230						1070	1400	□ 280	675	290	130	RC1/2	1620	196	590	6528RA		
						1010	1340																		

VALVE SIZE	JIS 10k				JIS 20k				ANSI Class 150				ANSI Class 300						
	P.C.D	N	H	E	P.C.D	N	H	E	P.C.D	N	H	E	P.C.D	N	H	E			
8" (200A)	□				□	305	12	M22	28	□				□	330.2	12	25		
10" (250A)	□	355	12	25	□	380	12	27		□	362	12	25	□	387.4	16	UNC 1 24		
12" (300A)	□	400	16	25	□	430	16	M24	30	□	431.8	12	25	□	450.8	16	1-1/8-BUN 28		
14" (350A)	□	445	16	25	□	480	16	M30x3	30	□	476.2	12	29	□	541.4	20	1-1/8-BUN 25		
16" (400A)	□	510	16	27	□	540	16	M30x3	35	□	539.8	16	29	□	571.5	20	1-1/4-BUN 30		
18" (450A)	□	585	20	M24	28	□	605	20	M30x3	32	□	577.8	16	32	□	628.6	24	1-1/4-BUN 28	
20" (500A)	□	620	20	M24		□	660	20	M30x3	36	□	635	20	1-1/8-BUN	30	□	685.8	24	1-1/4-BUN 32
24" (600A)	□	730	24	M30x3	26	□	770	24	M36x3	34	□	749.3	20	1-1/4-BUN	32	□	812.8	24	1-1/2-BUN 34

NOTE:

DRAWING No.

E-600B-6500RA-W-N
S

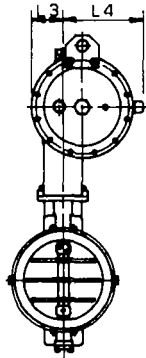
REV

A

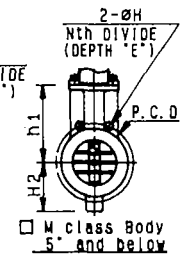
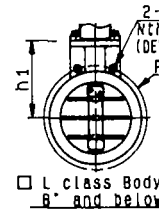
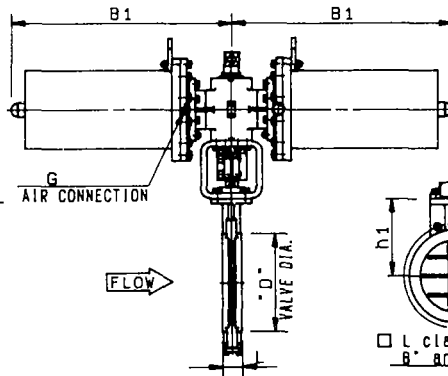
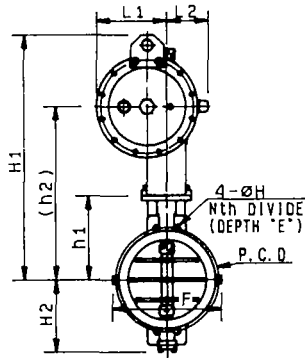
KOSO

BUTTERFLY VALVE 600B Spring return cylinder

□ DIRECT ACTION



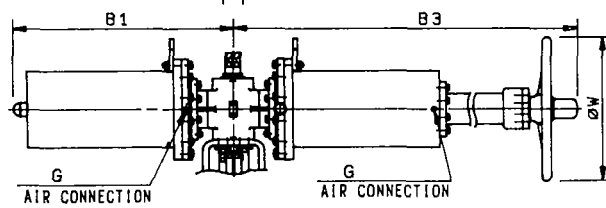
□ REVERSE ACTION



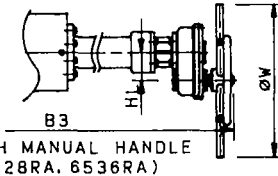
□ DIRECT ACTION



□ REVERSE ACTION



□ WITH MANUAL HANDLE (6520RA)



□ WITH MANUAL HANDLE (6528RA, 6536RA)

DIMENSIONS

UNIT: mm

VALVE SIZE CODE No.	L Class Body								M Class Body								ACTUATOR															
	□ JIS10k				□ ANSI Class 150				□ JIS20k				□ ANSI Class 300				Cylinder size	B1	L1	L2	L3	L4	G	□ WITH MANUAL HANDLE				CODE No.				
	L	h1	H2	D	F	h2	H1	L	h1	H2	D	F	h2	H1	B3	HL								W								
05 □ 5" (125A)	—	—	—	—	—	—	—	70	220	140	195	—	515	750	□ 200	770	211	135	91	255	RC3/8	1330	—	400	6520RA							
06 □ 6" (150A)	56	185	—	216	—	460	695	76	230	205	230	—	525	760	□ 200	770	211	135	91	255	RC3/8	1330	—	400	6520RA							
08 □ 8" (200A)	60	220	—	268	—	515	750	89	290	255	275	—	595	830	□ 200	770	211	135	91	255	RC3/8	1330	—	400	6520RA							
10 □ 10" (250A)	68	280	235	330	—	575	810	114	306	270	350	—	605	840	□ 280	865	275	165	122	315	RC1/2	1615	108	590	6528RA							
						605	880						□ 200	770	211	135	91	255	RC3/8	1330	—	400	6520RA									
						825	860						□ 280	865	275	165	122	315	RC1/2	1615	108	590	6528RA									
12 □ 12" (300A)	78	320	280	375	—	850	925	114	410	370	400	—	755	1030	□ 280	865	275	165	122	315	RC1/2	1615	108	590	6528RA							
						830	1160						□ 360	1070	315	265	135	355	RC1/2	1990	196	590	6536RA									
						670	905						□ 200	770	211	135	91	255	RC3/8	1330	—	400	6520RA									
14 □ 14" (350A)	78	365	325	416	500	695	970	127	435	395	445	560	830	1105	□ 280	865	275	165	122	315	RC1/2	1615	108	590	6528RA							
						885	1215						□ 360	1070	315	265	135	355	RC1/2	1990	196	590	6536RA									
						740	1015						□ 280	865	275	165	122	315	RC1/2	1615	108	590	6528RA									
16 □ 16" (400A)	102	395	355	480	540	815	1145	140	455	415	505	600	850	1235	□ 280	865	275	165	122	315	RC1/2	1615	108	590	6528RA							
						845	1175						□ 360	1070	315	265	135	355	RC1/2	1990	196	590	6536RA									
						770	1045						□ 280	865	275	165	122	315	RC1/2	1615	108	590	6528RA									
18 □ 18" (450A)	114	425	370	528	610	845	1175	152	480	440	560	660	875	1150	□ 280	865	275	165	122	315	RC1/2	1615	108	590	6528RA							
						930	1260						□ 360	1070	315	265	135	355	RC1/2	1990	196	590	6536RA									
						805	1080						□ 280	865	275	165	122	315	RC1/2	1615	108	590	6528RA									
20 □ 20" (500A)	127	460	405	580	650	880	1210	152	500	460	615	720	950	1280	□ 280	865	275	165	122	315	RC1/2	1615	108	590	6528RA							
						930	1260						□ 360	1070	315	265	135	355	RC1/2	1990	196	590	6536RA									
						955	1230						□ 280	865	275	165	122	315	RC1/2	1615	108	590	6528RA									
24 □ 24" (600A)	130	560	490	685	740	1010	1340	154	617	565	720	820	1070	1400	□ 280	865	275	165	122	315	RC1/2	1615	108	590	6528RA							
						955	1230						□ 360	1070	315	265	135	355	RC1/2	1990	196	590	6536RA									

VALVE SIZE	JIS 10k				JIS 20k				ANSI Class 150				ANSI Class 300						
	P.C.D.	N	H	E	P.C.D.	N	H	E	P.C.D.	N	H	E	P.C.D.	N	H	E			
5" (125A)	□	—	—	—	□	225	8	25	□	—	—	—	□	235	8	22			
6" (150A)	□	240	8	23	□	260	12	M22	20	□	241.3	8	22	□	269.7	12	22		
8" (200A)	□	290	12	23	□	305	12	M22	28	□	298.4	8	22	□	330.2	12	25		
10" (250A)	□	355	12	25	□	380	12	27	□	362	12	25	□	387.4	16	UNC 1 24			
12" (300A)	□	400	16	25	□	430	16	M24	30	□	431.8	12	25	□	450.8	16	1-1/8-BUN 28		
14" (350A)	□	445	16	25	□	480	16	M30x3	30	□	476.2	12	29	□	541.4	20	1-1/8-BUN 25		
16" (400A)	□	510	16	27	□	540	16	M30x3	35	□	539.8	16	29	□	571.5	20	1-1/4-BUN 30		
18" (450A)	□	565	20	M24	28	□	605	20	M30x3	32	□	577.8	16	32	□	628.6	24	1-1/4-BUN 28	
20" (500A)	□	620	20	M24	—	□	660	20	M30x3	36	□	635	20	1-1/8-BUN	30	□	685.8	24	1-1/4-BUN 32
24" (600A)	□	730	24	M30x3	26	□	770	24	M36x3	34	□	749.3	20	1-1/4-BUN	32	□	812.8	24	1-1/2-BUN 34

NOTE:

DRAWING No.

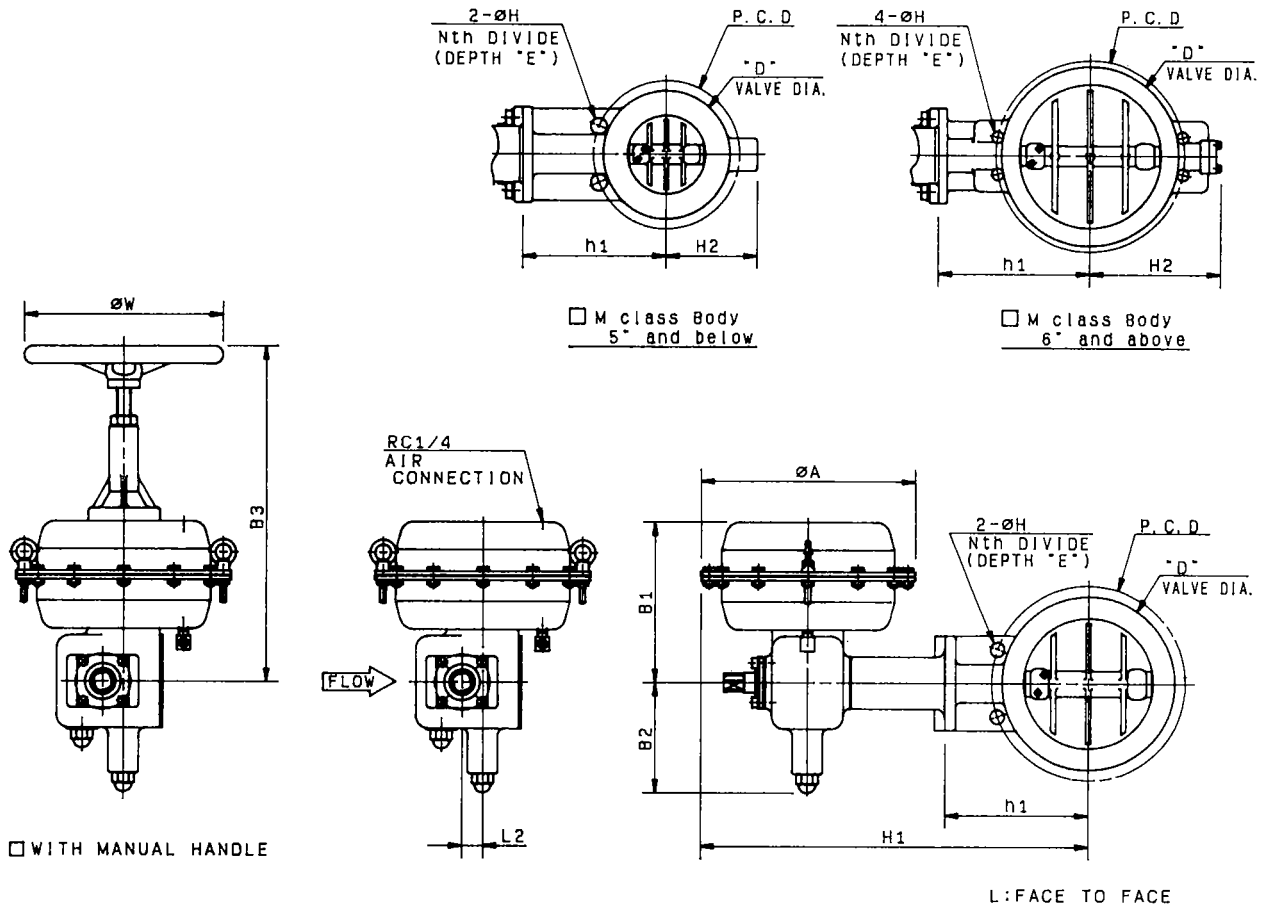
E-600B-6500RA-D N
R S

REV

A

KOSO

BUTTERFLY VALVE 600B DIRECT ACTION



DIMENSIONS

UNIT: mm

CODE No.	VALVE SIZE	L Class Body					M Class Body					ACTUATOR							
		□ JIS10k		□ ANSI Class 150			□ JIS20k		□ ANSI Class 300			size	A	B1	B2	L2	□ WITH MANUAL HANDLE		CODE No.
		L	h1	H2	D	H1	L	h1	H2	D	H1						B3	w	
03	□ 3" (80A)	46	137	—	133	405	64	162	120	135	—	□ 218	218	140	110	18	325	200	5218RA
						445					475	□ 270	270	205	140	26	420	250	5227RA
						—					525	□ 350	350	235	155	35	495	320	5235RA
04	□ 4" (100A)	52	160	—	155	425	64	172	130	160	—	□ 218	218	140	110	18	325	200	5218RA
						465					485	□ 270	270	205	140	26	420	250	5227RA
						—					535	□ 350	350	235	155	35	495	320	5235RA
05	□ 5" (125A)	56	170	—	187	480	70	220	140	195	—	□ 270	270	205	140	26	420	250	5227RA
						530					610	□ 350	350	235	155	35	495	320	5235RA
						—					—	—	—	—	—	—	—	—	—
06	□ 6" (150A)	56	185	—	216	495	76	230	205	230	—	□ 270	270	205	140	26	420	250	5227RA
						545					620	□ 350	350	235	155	35	495	320	5235RA
						—					—	—	—	—	—	—	—	—	—
08	□ 8" (200A)	60	220	—	266	610	—	—	—	—	—	□ 350	350	235	155	35	495	320	5235RA

VALVE SIZE	JIS 10k					JIS 20k					ANSI Class 150					ANSI Class 300				
	P.C.D	N	H	E		P.C.D	N	H	E		P.C.D	N	H	E		P.C.D	N	H	E	
3" (80A)	□ 150	8	19			□ 160	8	23			□					□ 168.1	8	22		
4" (100A)	□ 175	8	19			□ 185	8	23			□ 190.5	8	19			□ 200.2	8	22		
5" (125A)	□ 210	8	23			□ 225	8	25			□ 215.9	8	22			□ 235	8	22		
6" (150A)	□ 240	8	23			□ 260	12	M22	20		□ 241.3	8	22			□ 269.7	12	22		
8" (200A)	□ 290	12	23			□					□ 298.4	8	22			□				

NOTE:

DRAWING No.

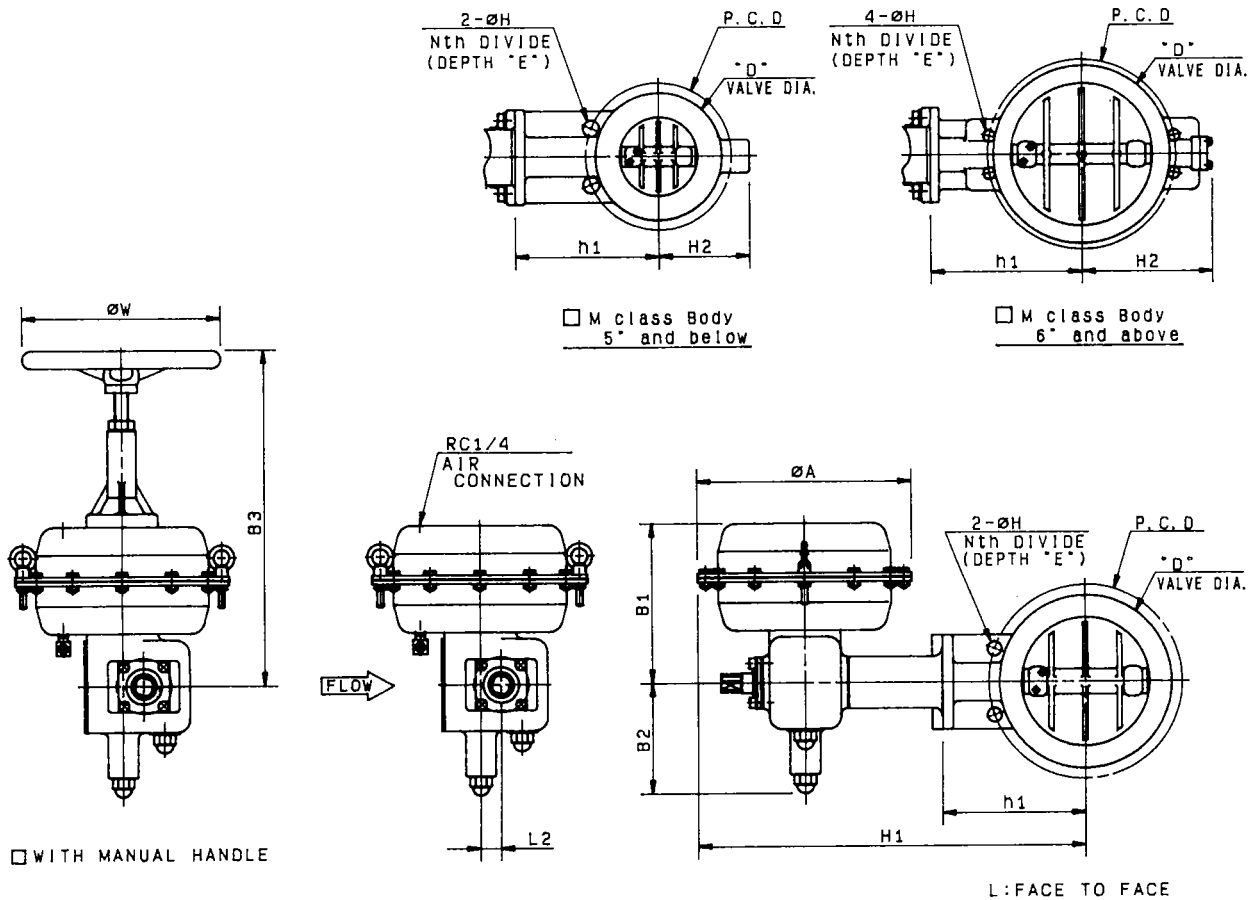
E-600B-5200RA-D-N
T

REV

A

KOSO

BUTTERFLY VALVE 600B REVERSE ACTION



DIMENSIONS

UNIT: mm

CODE No.	VALVE SIZE	L Class Body					M Class Body					ACTUATOR							
		□ JIS10k □ ANSI Class 150		□ JIS20k □ ANSI Class 300			□ JIS10k □ ANSI Class 150		□ JIS20k □ ANSI Class 300			size	A	B1	B2	L2	□ WITH MANUAL HANDLE		CODE No.
		L	h1	H2	D	H1	L	h1	H2	D	H1						B3	w	
03	□ 3" (80A)	46	137	—	133	405	64	162	120	135	—	□ 218	218	140	110	18	325	200	5218RA
						445					475	□ 270	270	205	140	26	420	250	5227RA
						—					525	□ 350	350	235	155	35	495	320	5235RA
04	□ 4" (100A)	52	160	—	155	425	64	172	130	160	—	□ 218	218	140	110	18	325	200	5218RA
						465					485	□ 270	270	205	140	26	420	250	5227RA
						—					535	□ 350	350	235	155	35	495	320	5235RA
05	□ 5" (125A)	56	170	—	187	480	70	220	140	195	—	□ 270	270	205	140	26	420	250	5227RA
						530					610	□ 350	350	235	155	35	495	320	5235RA
06	□ 6" (150A)	56	185	—	216	495	76	230	205	230	—	□ 270	270	205	140	26	420	250	5227RA
						545					620	□ 350	350	235	155	35	495	320	5235RA
08	□ 8" (200A)	60	220	—	266	610	—	—	—	—	□ 350	350	235	155	35	495	320	5235RA	

VALVE SIZE	JIS 10k				JIS 20k				ANSI Class 150				ANSI Class 300			
	P.C.D	N	H	E	P.C.D	N	H	E	P.C.D	N	H	E	P.C.D	N	H	E
3" (80A)	□ 150	8	19		□ 160	8	23		□ 190.5	8	19		□ 168.1	8	22	
4" (100A)	□ 175	8	19		□ 185	8	23		□ 215.9	8	22		□ 200.2	8	22	
5" (125A)	□ 210	8	23		□ 225	8	25		□ 241.3	8	22		□ 235	8	22	
6" (150A)	□ 240	8	23		□ 260	12	M22	20	□ 298.4	8	22		□ 269.7	12	22	
8" (200A)	□ 290	12	23													

NOTE :

DRAWING No.

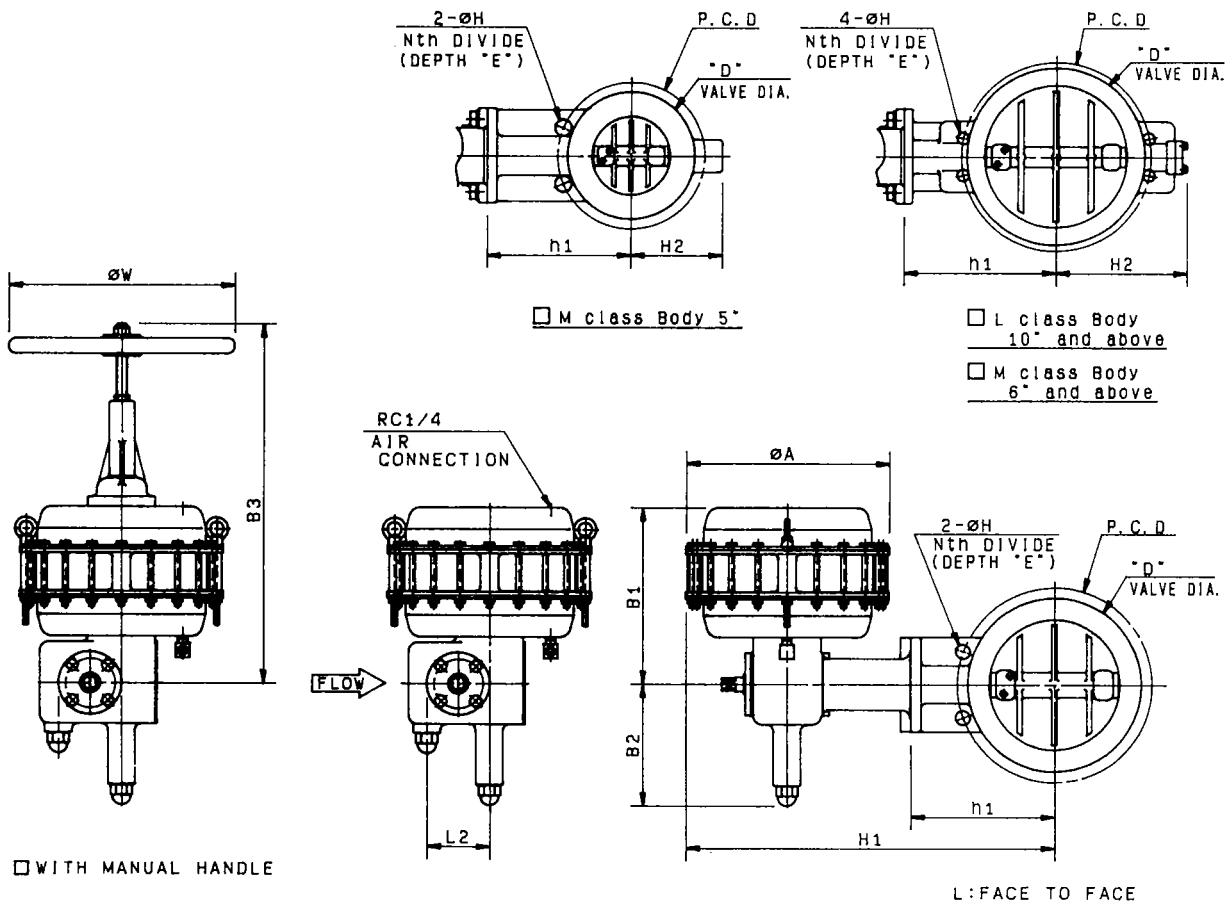
E-600B-5200RA-R-N
T

REV

A

KOSO

BUTTERFLY VALVE 600B DIRECT ACTION



DIMENSIONS

UNIT: mm

VALVE SIZE CODE No.	L Class Body					M Class Body					ACTUATOR							
	□ JIS10k		□ ANSI Class 150			□ JIS20k		□ ANSI Class 300			size	A	B1	B2	L2	□ WITH MANUAL HANDLE		CODE No.
	L	h1	H2	D	H1	L	h1	H2	D	H1						B3	W	
05 □ 5" (125A)	—	—	—	—	—	70	220	140	195	710	□ 450	450	390	270	70	790	500	524LRA
06 □ 6" (150A)	—	—	—	—	—	76	230	205	230	720	□ 450	450	390	270	70	790	500	524LRA
08 □ 8" (200A)	60	220	—	226	710	89	290	255	275	790	□ 450	450	390	270	70	790	500	524LRA
10 □ 10" (250A)	68	280	—	330	770	114	306	270	350	810	□ 450	450	390	270	70	790	500	524LRA
12 □ 12" (300A)	78	320	—	375	820	114	410	370	400	925	□ 450	450	390	270	70	790	500	524LRA

VALVE SIZE	JIS 10k				JIS 20k				ANSI Class 150				ANSI Class 300			
	P.C.D	N	H	E	P.C.D	N	H	E	P.C.D	N	H	E	P.C.D	N	H	E
5" (125A) □					□ 225	8	25		□				□ 235	8	22	
6" (150A) □					□ 260	12	M22	20	□				□ 269.7	12	22	
8" (200A) □	290	12	23		□ 305	12	M22	28	□ 298.4	8	22		□ 330.2	12	25	
10" (250A) □	355	12	25		□ 380	12	27		□ 362	12	25		□ 387.4	16	UNC 1	24
12" (300A) □	400	16	25		□ 430	16	M24	30	□ 431.8	12	25		□ 450.8	16	1-1/8-UNC	28

NOTE :

DRAWING No.

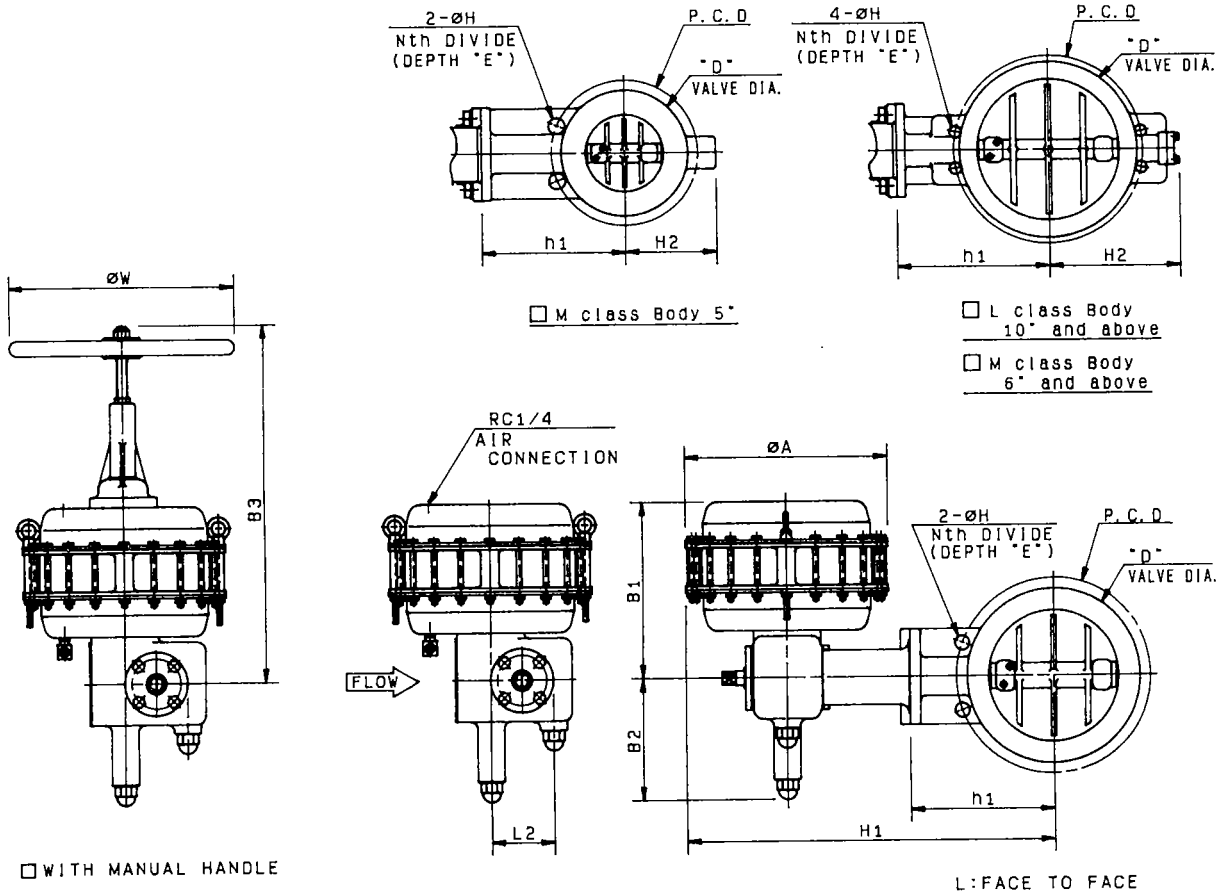
E-600B-524LRA-D-N

REV

A

KOSO

BUTTERFLY VALVE 600B REVERSE ACTION



DIMENSIONS UNIT: mm

VALVE SIZE CODE No.	L Class Body		M Class Body					ACTUATOR							CODE No.			
	□ JIS10k □ ANSI Class 150		□ JIS20k □ ANSI Class 300					size	A	B1	B2	L2	□ WITH MANUAL HANDLE					
	L	h1	H2	D	H1	L	h1						H2	D		H1	B3	W
05 □ 5" (125A)	—	—	—	—	—	70	220	140	195	710	□ 450	450	390	270	70	790	500	524LRA
06 □ 6" (150A)	—	—	—	—	—	76	230	205	230	720	□ 450	450	390	270	70	790	500	524LRA
08 □ 8" (200A)	60	220	—	226	710	89	290	255	275	790	□ 450	450	390	270	70	790	500	524LRA
10 □ 10" (250A)	68	280	—	330	770	114	306	270	350	810	□ 450	450	390	270	70	790	500	524LRA
12 □ 12" (300A)	78	320	—	375	820	114	410	370	400	925	□ 450	450	390	270	70	790	500	524LRA

VALVE SIZE	JIS 10k				JIS 20k				ANSI Class 150				ANSI Class 300			
	P.C.D	N	H	E	P.C.D	N	H	E	P.C.D	N	H	E	P.C.D	N	H	E
5" (125A)	□				□ 225	8	25		□				□ 235	8	22	
6" (150A)	□				□ 260	12	M22	20	□				□ 269.7	12	22	
8" (200A)	□ 290	12	23		□ 305	12	M22	28	□ 298.4	8	22		□ 330.2	12	25	
10" (250A)	□ 355	12	25		□ 380	12	27		□ 362	12	25		□ 387.4	16	UNC 1	24
12" (300A)	□ 400	16	25		□ 430	18	M24	30	□ 431.8	12	25		□ 450.8	16	1-1/8-UNC	28

NOTE:

DRAWING No.

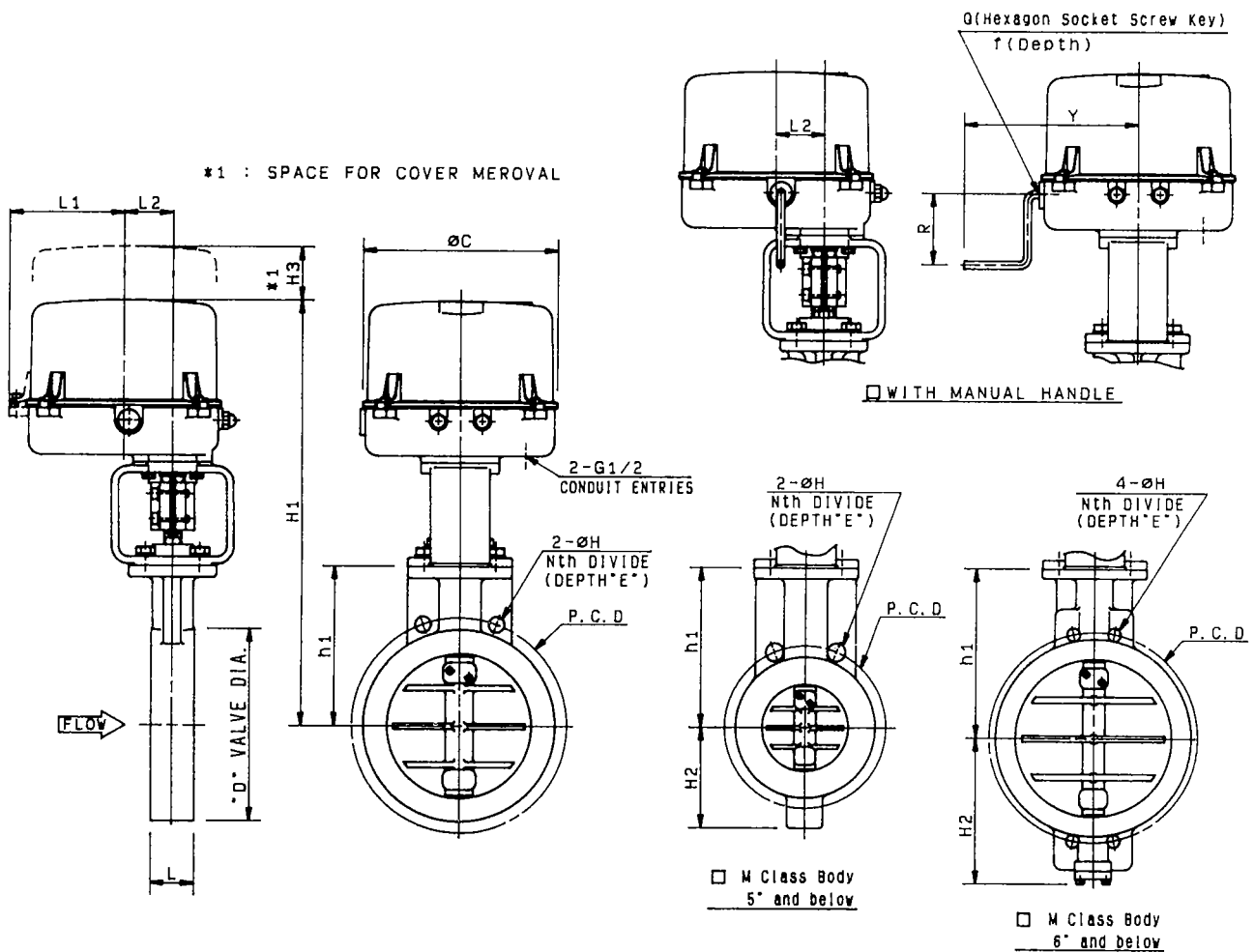
E-600B-524LRA-R-N
T

REV

A

KOSO

BUTTERFLY VALVE 600B



DIMENSIONS

UNIT:mm

VALVE SIZE CODE No.	L Class Body					M Class Body					ACTUATOR										
	□ JIS10k		□ ANSI Class 150			□ JIS20k		□ ANSI Class 300			□ WITH MANUAL HANDLE			SIZE CODE No.							
	L	h1	H2	D	H1	L	h1	H2	D	H1	H3	L1	L2	ØC	R	Y	Q-r				
03 □ 3" (80A)	46	137	—	133	440	64	162	120	135	—	120	130	56	225	80	200	6-12	□35A2RB	□36A2RA	□34A2RA	
					480						510	155	145	68	255	160	225	8-15	□35B1RB	□36B1RA	□34B1RA
					—						—	155	145	68	255	160	225	8-15	□35B2RB	□36B2RA	□34B2RA
04 □ 4" (100A)	52	160	—	155	460	64	172	130	160	—	120	130	56	225	80	200	6-12	□35A2RB	□36A2RA	□34A2RA	
					500						520	155	145	68	255	160	225	8-15	□35B1RB	□36B1RA	□34B1RA
					—						—	155	145	68	255	160	225	8-15	□35B2RB	□36B2RA	□34B2RA
05 □ 5" (125A)	56	170	—	187	515	70	220	140	195	595	155	145	68	255	160	225	8-15	□35B1RB	□36B1RA	□34B1RA	
					500													□35B2RB	□36B2RA	□34B2RA	
					—													□35B2RB	□36B2RA	□34B2RA	
06 □ 6" (150A)	56	185	—	216	530	76	230	205	230	605	155	145	68	255	160	225	8-15	□35B1RB	□36B1RA	□34B1RA	
					500													□35B2RB	□36B2RA	□34B2RA	
					—													□35B2RB	□36B2RA	□34B2RA	
08 □ 8" (200A)	60	220	—	266	595	—	—	—	—	—	155	145	68	255	160	225	8-15	□35B2RB	□36B2RA	□34B2RA	
					—													□35B2RB	□36B2RA	□34B2RA	
					—													□35B2RB	□36B2RA	□34B2RA	

VALVE SIZE	JIS 10k				JIS 20k				ANSI Class 150				ANSI Class 300								
	□	P.C.D	N	H	E	□	P.C.D	N	H	E	□	P.C.D	N	H	E	□	P.C.D	N	H	E	
3" (80A)	□	150	8	19		□	180	8	23		□					□	188.1	8	22		
4" (100A)	□	175	8	19		□	185	8	23		□	190.5	8	19		□	200.2	8	22		
5" (125A)	□	210	8	23		□	225	8	25		□	215.9	8	22		□	235	8	22		
6" (150A)	□	240	8	23		□	260	12	M22	20	□	241.3	8	22		□	269.7	12	22		
8" (200A)	□	290	12	23		□					□	298.4	8	22		□					

NOTE :

DRAWING No.

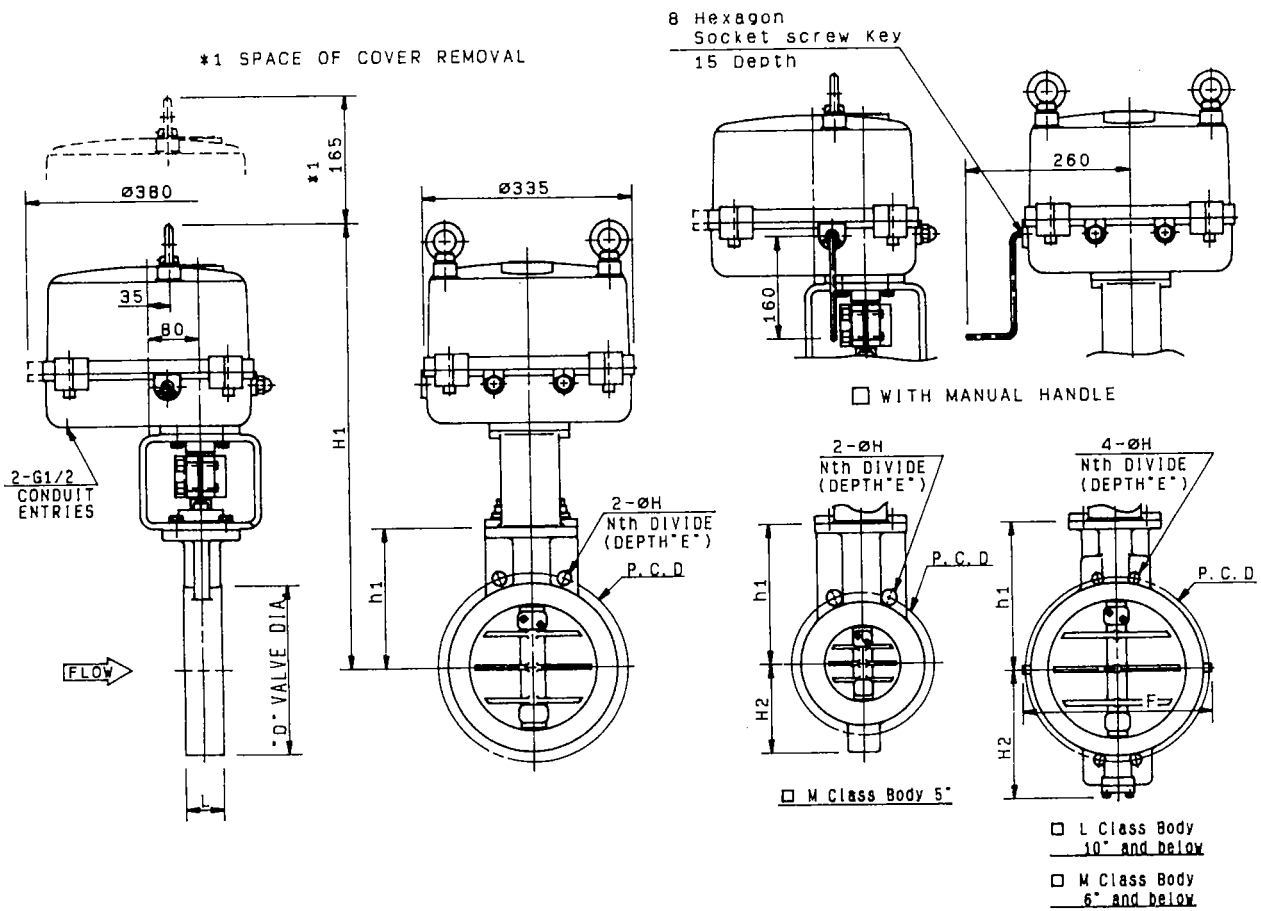
E-600B- 3500RB
3800RA -B-N
3400RA -B-S

REV

A

KOSO

BUTTERFLY VALVE 600B



DIMENSIONS UNIT: mm

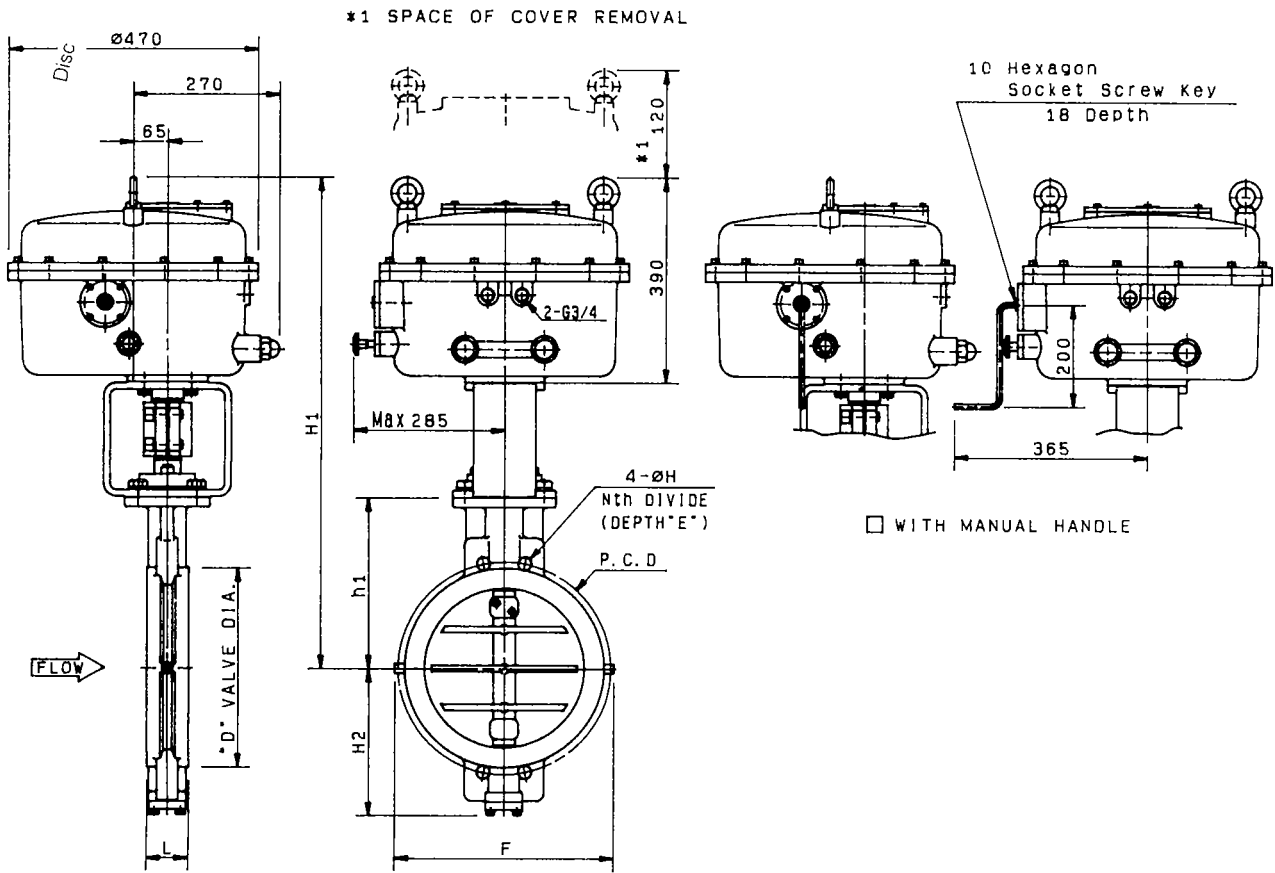
VALVE SIZE CODE No.	L Class Body						M Class Body						ACTUATOR SIZE CODE No.
	□ JIS10k			□ ANSI Class 150			□ JIS20k			□ ANSI Class 300			
	L	h1	H2	D	F	H1	L	h1	H2	D	F	H1	
05 □ 5" (125A)	—	—	—	—	—	—	70	220	140	195	—	715	□35C1RB □36C1RA □34C1RA
06 □ 6" (150A)	—	—	—	—	—	—	76	230	205	230	—	725	□35C1RB □36C1RA □34C1RA □36C2RA □34C2RA
08 □ 8" (200A)	60	220	—	266	—	715	89	290	255	275	—	800	□35C1RB □36C1RA □34C1RA □36C2RA □34C2RA □35C3RB □36C3RA □34C3RA
10 □ 10" (250A)	68	280	235	330	—	775	114	306	270	350	—	820	□35C1RB □36C1RA □34C1RA □36C2RA □34C2RA □35C3RB □36C3RA □34C3RA
12 □ 12" (300A)	78	320	280	375	—	830	114	410	370	400	—	920	□35C3RB □36C3RA □34C3RA □36C2RA □34C2RA
14 □ 14" (350A)	78	365	325	418	500	875	—	—	—	—	—	—	□35C3RB □36C3RA □34C3RA □36C2RA □34C2RA
16 □ 16" (400A)	102	395	355	480	540	920	—	—	—	—	—	—	□35C3RB □36C3RA □34C3RA

VALVE SIZE	JIS 10k				JIS 20k				ANSI Class 150				ANSI Class 300			
	P.C.D	N	H	E	P.C.D	N	H	E	P.C.D	N	H	E	P.C.D	N	H	E
5" (125A) □					□ 225	8	25						□ 235	8	22	
6" (150A) □					□ 260	12	M22	20					□ 269.7	12	22	
8" (200A) □	290	12	23		□ 305	12	M22	28	□ 298.4	8	22		□ 330.2	12	25	
10" (250A) □	355	12	25		□ 380	12	27		□ 362	12	25		□ 387.4	16	UNC 1	24
12" (300A) □	400	16	25		□ 430	16	M24	30	□ 431.8	12	25		□ 450.8	16	1-1/8 UNC	28
14" (350A) □	445	16	25						□ 476.2	12	29					
16" (400A) □	510	16	27						□ 539.8	16	29					

NOTE :

DRAWING No.	
E-600B-	35C RB 36C RA -B-N 34C RA -S
REV	
A	KOSO

BUTTERFLY VALVE 600B



DIMENSIONS

UNIT: mm

VALVE SIZE CODE No.	L Class Body <input type="checkbox"/> JIS10k <input type="checkbox"/> ANSI Class 150						M Class Body <input type="checkbox"/> JIS20k <input type="checkbox"/> ANSI Class 300						ACTUATOR SIZE CODE No.	
	L	h1	H2	D	F	H1	L	h1	H2	D	F	H1		
08 <input type="checkbox"/> 8" (200A)	—	—	—	—	—	—	89	290	255	275	—	880	<input type="checkbox"/> 36D1RA	<input type="checkbox"/> 34D1RA
10 <input type="checkbox"/> 10" (250A)	—	—	—	—	—	—	114	306	270	350	—	900	<input type="checkbox"/> 36D1RA	<input type="checkbox"/> 34D1RA
12 <input type="checkbox"/> 12" (300A)	78	320	280	375	—	910	114	410	370	400	—	1015	<input type="checkbox"/> 36D1RA	<input type="checkbox"/> 34D1RA
14 <input type="checkbox"/> 14" (350A)	78	365	325	416	500	955	127	435	395	445	560	1065	<input type="checkbox"/> 36D1RA	<input type="checkbox"/> 34D1RA
16 <input type="checkbox"/> 16" (400A)	102	395	355	480	540	1000	140	455	415	505	600	1085	<input type="checkbox"/> 36D1RA	<input type="checkbox"/> 34D1RA
18 <input type="checkbox"/> 18" (450A)	114	425	370	528	610	1030	152	480	440	560	660	1110	<input type="checkbox"/> 36D1RA	<input type="checkbox"/> 34D1RA

VALVE SIZE	JIS 10k				JIS 20k				ANSI Class 150				ANSI Class 300				
	P.C.D	N	H	E	P.C.D	N	H	E	P.C.D	N	H	E	P.C.D	N	H	E	
8" (200A) <input type="checkbox"/>					\square 305	12	M22	28	\square					\square 330.2	12	25	E
10" (250A) <input type="checkbox"/>					\square 380	12	27		\square					\square 387.4	16	UNC 1	24
12" (300A) <input type="checkbox"/>	400	16	25		\square 430	16	M24	30	\square 431.8	12	25			\square 450.8	16	1-1/8-BUN	28
14" (350A) <input type="checkbox"/>	445	16	25		\square 480	16	M30x3	30	\square 476.2	12	29			\square 541.4	20	1-1/8-BUN	25
16" (400A) <input type="checkbox"/>	510	16	27		\square 540	16	M30x3	38	\square 539.8	16	29			\square 571.5	20	1-1/4-BUN	30
18" (450A) <input type="checkbox"/>	565	20	M24	28	\square 605	20	M30x3	32	\square 577.8	16	32			\square 628.6	24	1-1/4-BUN	28

NOTE:

DRAWING No.

E-600B-36DORA-B-N
34DORA-B-S

REV

A

KOSO

KOSO 日本工裝株式会社

NIHON KOSO CO., LTD.

本社 ☎ 103-0027 東京都中央区日本橋1丁目16番7号 工場日本橋ビル
☎ 03-5202-4300 FAX 03-5202-4301

Head office KOSO NIHONBASHI B/D, 1-16-7 NIHONBASHI, CHUO-KU,
TOKYO, 103-0027, JAPAN
☎ 03-5202-4300 FAX 03-5202-4301

E-mail: info@koso.co.jp
Website: <http://www.koso.co.jp>

KOSO 韓國KOSO株式會社

KOREA KOSO CO., LTD.

本社 서울特別市 江南區 驛三洞 642-6 (星志하이츠 III 18F 16)
☎ (02) 539-9011 FAX (02) 566-5119

工場 仁川廣域市 南洞區 古殘洞 671-2 南洞工團 90B-3L
☎ (032) 818-2136 FAX (032) 816-3870

WEB : www.kosokor.co.kr
E-mail : kosokor@kosokor.co.kr

■ WORLD-WIDE NETWORK(Sales, Manufacturing, Services)

Koso International, Inc., Ltd., CA, U.S.A	Tel.(1)805-942-4499	FAX.(1)805-942-0999
Koso America, Inc., Ltd., Boston, U.S.A	Tel.(1)617-575-1199	FAX.(1)617-575-1198
Koso Control Engineering(Wuxi) Co.,Ltd., China	Tel.(86)510-2400821	FAX.(86)510-2402498
Wuxi Koso Control Valve Co., Ltd., China	Tel.(86)510-2408634	FAX.(86)510-2402498
Anshan-Nippon Ar-Koso Co., Ltd., China	Tel.(86)412-812686	FAX.(86)412-814582
Korea Controls Co., Ltd., Seoul, Korea	Tel.(82)2-539-9011	FAX.(82)2-566-5119
Korea Koso Engineering Co., Ltd., Seoul, Korea	Tel.(82)2-539-9018	FAX.(82)2-566-5119
Koso Controls Asia Pte. Ltd., Singapore	Tel.(65)7472722	FAX.(65)7467677

※この資料の記載内容は、お断りなく変更することがありますのでご了承下さい
Subject to change without notice.