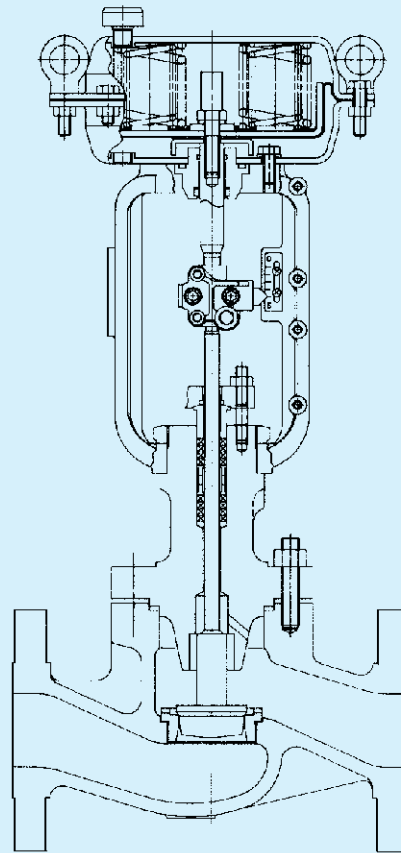


KOSO

STANDARD SPECIFICATION

*TOP GUIDED SINGLE SEATED
GLOBE VALVES*

501T SERIES



KOSO

KOSO's Control Valves and Instrumentation Systems

KOSO ,the leading industrial control valve manufacturer with strong research and development capability of its own, has been meeting requirements of the time. Always making available a wide range of product lines that can satisfy the needs of the coming century, **KOSO** is committed to providing control valves, and the systems there of, of highest quality and reliability, produced under its quality assurance system complying with ISO 9001 standard.

Here **KOSO** presents its technological catalog, introducing various types of **KOSO** control valves, hoping to be of service as you select valves for your specific applications.

If you have questions on this technological catalog or require additional printed materials, please contact our sales representative nearest you.

501 T Top Guided Single Seated Globe Valves

GENERAL

Simple structure and compact size characterize our top - guided control valves. They are applicable in a wide scope of liquid services as well as steam /gas services. Those valves are easily adaptable to bellows, steam-jacketed and long extension bonnets.

STANDARD SPECIFICATIONS BODY

Type	unbalance plug type, Balance plug type
Body size	Unbalance plug type : ½" ~ 8" (15 A ~ 200 A) Balance plug type : 5" ~ 8" (125 A ~ 200 A) In the case of plug size under 1/16", we recommend our 520T series
Plug form	P-port single seated, Q-port single seated
Characteristics	Equal percentage, Linear, On-off.
Trim materials Trim treatment	See Table 1 & Fig. 1 for hardening treatment and operating pressure-temperature
Body ratings	JIS 10K, 20K, 30K, 40K ANSI Class 150, 300,600 ANSI Class 900 (JIS 63K) Trims are structured differently for ANSI Class 900 (JIS 63K) and over
Body Connections	Flanged (RF RTJ), Weld ends (SW : under 2", BW : over 3")
Face to Face dimension	See pages 14 ~ 24.
Body & Bonnet Material	SCP H2 / WCB, SCPH 21/WC6, SCPH32/WC9, SCPH 61/C5, SCPL1/LCB, SCPL21/LC2, SCPL31/LC3, SCS13A/CF8, SCS14A/CF8M and other alloy steels As to the operating pressure-temperature limitation for each material, see Tables 1 and 2.
Bonnet type	Standard type : -5 ~+230 ⁰ C Fin-Extension type : -45 ~ - 5 ⁰ C -45 ~ -under - 5 ⁰ C or over + 230 ⁰ C Long extension type : -196 ~ - 45 ⁰ C Bellow seal type (Pressed or Welded), Steam jacketed type Note : The allowable operating pressure - temperature limitation for each material
Packing	Teflon V-ring, Teflon - Asbestos, Grafoil, etc. See Fig. 2 for selection
Gasket	Grooved metal gasket (Soft steel, stainless steel or other alloy steels)
Painting colour	Munsell N-6 (Epxoy resin group) is standard. In the case of stainless steel body, no painting is standard.

ACTUATOR

Type	Diaphragm type	Solid State Electronic type		Electric Motor type
	5200 LA	3500LB	3600LA	3400LA
Specification	Multi-Spring type	DC Motor resolution : 0.3%	AC Motor resolution : 0.4%	AC Motor
Purpose	Modulation or On-off	Modulation		On-off
Air supply or Power supply	Air Supply (Spring range) 140 (20~100) kPa [gauge] 300 (80~200) kPa [gauge] 340 (80~200) kPa [gauge] 340 (120~300) kPa [gauge]	AC 230V 50/60 Hz Power supply 4~20mA DC Input signal		Power supply AC 230V 50/60Hz Input signal : Change over contact
Connection	Air piping : Rc¼ (Size 650 : Rc 3/8)	Wiring : 2-G½		Wiring : 2-G½
Direct Action	Air to valve shut	Signal increase to valve shut		Manual selection valve open, shut, stop.
Reverse Action	Air to valve open	Signal increase to valve open		
Hysteresis	≦ 1 % of FS with positioner	≦ 0.5% of FS	≦ 0.8% of FS	—
Linearity	≦ ± 2 % of FS with positioner	≦ ±1% of FS	≦ ±1% of FS	—
Ambient temp.	-10 ~ + 70°C	-10~+55°C		-10~+55°C
Painting	Munsell N-6	Metallic blue		Metallic blue
Option	E/P, P/P Positioner, Air - set, Solenoid valve, Limit switch, Speed controller, Lock valve, Lock-up valve, Manual handle, etc	Resolution : 0.1% Split range, Position transmitter	Over load unit	Potentiometer Micro switch Space heater, etc.
		Space heater, Junction box, Manual handle, etc		

PERFORMANCE

Cv Rated Cv	See Table 3.
Flow Characteristics	See Fig.4.
Rangeability	50 : 1 (Plug size ≦ ¼ B — 30 : 1)
Seat Leakage	See Table 1.
Allowable pressure drops	See Table 4.

OPTIONAL SPECIAL SPECIFICATIONS (additional cost is required)

Special testing for Body	Material certificate, Liquid penetrant testing, Radiographic testing, Flow characteristic testing, Low temperature testing, Steam testing.
Special Cleaning for Body	Oxygen clean, Oil-free, Water-free
Special specification for Body and Actuator	Sand and Dust proof, Salty environment proof, Cold area proof, Tropical area proof Do not use copper alloy, Special piping and fitting, Vacuum service proof, SUS bolt and nut for exposed parts, Non-standard painting
Authorization	Japanese government authorization for High pressure gas

Table 1 BODY / TRIM STANDARD MATERIAL COMBINATION, OPERATING TEMPERATURE AND SEAT LEAKAGE

- ① Trim material / treatment vs operating temperature - pressure range : See Fig.1
- ② When ANSI Class V for seat leakage is required, please consult with us.
- ③ In the case of cavitation service, we recommend our anti-cavitation control valves.
- ④ In the case of flashing service, we recommend reduced bore
- ⑤ Non-standard Q-port single is available on request, which can reduce the seat leakage to as small as 0.001% of the rated Cv.
- ⑥ In the case of stellite seat for plug size less than 1/4" we will make full stellite surface

Table 1-1 BODY MATERIAL : CARBON STEEL (BODY SIZE 4" AND UNDER)

Body material		SCPH2 / A 216-WCB, SCPH21 / A217-WC6, SCPH61/ A217-C5, SCPL1/A352-LCB			
Plug material		SUS316	SUS316	SUS316	SUS316
Plug treatment		Reinforced Teflon		Stellite seat	Stellite full
Seat material		SUS316/SCS14A	SUS316/SCS14A	SUS316/SCS14A	SUS316/SCS14A
Seat treatment		————	————	Stellite seat	Stellite full
Guide material		SUS440B/SUS440C	SUS440B/SUS440C	SUS440B/SUS440C	SUS440B/SUS440C
Guide treatment		Heat treatment	Heat treatment	Heat treatment	Heat treatment
Gasket		T/ # 1890-S	T/ # 1890-S	T/ # 1890-S	T/ # 1890-S
Seat Leakage	ANSI	Class VI	Class IV	Class IV	Class IV
	Rated CvX	bubble tight	0.01%	0.01%	0.01%
Operating temperature °C	SCPH2 / WCB Body	- 5 ~+ 200	- 5 ~+ 250	- 5 ~+ 425	- 5 ~+ 425
	SCPH21/ WC6 Body				
Operating temperature °C	SCPH61/C5 Body	- 45 ~+ 200	- 45 ~+ 250	- 45 ~+ 350	- 45 ~+ 350
	SCPL1/LCB Body				

Table 1-2 BODY MATERIAL : CARBON STEEL (BODY SIZE 5" AND OVER)

Body material		SCPH2 / A 216-WCB, SCPH21 / A217-WC6, SCPH61/ A217-C5, SCPL1/A352-LCB				
Plug material		SUS316/SCS14A	SUS316/SCS14A	SUS316/SCS14A	SUS316/SCS14A	SUS316/SCS14A
Plug treatment		Reinforced TFE	————	Stellite seat	Stellite seat	Stellite full
Seat material		SUS316/SCS14A	SUS316/SCS14A	SUS316/SCS14A	SUS316/SCS14A	SUS316/SCS14A
Seat treatment		————	————	Stellite seat	Stellite seat	Stellite full
Guide material		A 105	A 105	A 105	A 105	A 105
Guide treatment		Reinforced TFE	Reinforced TFE	Reinforced TFE	Stellite	Stellite
Gasket		T/# 1890-S	T/# 1890-S	T/# 1890-S	T/# 1890-S	T/# 1890-S
Seal Leakage	ANSI	Class VI	Class IV	Class IV	Class IV	Class IV
	Rated CvX	bubble tight	0.01 %	0.01 %	0.01 %	0.01 %
Operating temperature °C	SCPH2 / WCB Body	-5~+200	-5~+200	-5~+200	-5~+425	-5~+425
	SCPH21/ WC6 Body					
Operating temperature °C	SCPH61/C5 Body	-45~+200	-45~+200	-45~+200	-45~+350	-45~+350
	SCPL1/LCB Body					

Table 1-3 BODY MATERIAL : STAINLESS STEEL (BODY SIZE ½" ~8")

Body material		SCS13A/A351-CF8, SCS14A/A351-CF8M				
Plug material		SUS316/SCS14A	SUS316/SCS14A	SUS316/SCS14A	SUS316/SCS14A	SUS316/SCS14A
Plug treatment		Reinforced Teflon	—	Stellite seat	Stellite seat	Stellite full
Seat material		SUS316/SCS14A	SUS316/SCS14A	SUS316/SCS14A	SUS316/SCS14A	SUS316/SCS14A
Seat treatment		—	—	Stellite seat	Stellite seat	Stellite full
Guide material		SUS316	SUS316	SUS316	SUS316	SUS316
Guide treatment		Reinforced TFE	Reinforced TFE	Reinforced TFE	Stellite	Stellite
Gasket		T/#1890-316	T/#1890-316	T/#1890-316	T/#1890-316	T/#1890-316
Seat Leakage	ANSI	Class VI	Class IV	Class IV	Class IV	Class IV
	Rated CvX	bubble - tight	0.01%	0.01%	0.01%	0.01%
Operating Temp. °C		-80~+200	- 80 ~+ 200	- 80 ~+ 200	- 196 ~+ 538	- 196~+ 538

Table 2 BODY MATERIAL / OPERATING PRESSURE- TEMPERATURE RATINGS

Table 2-1 ANSI

UNIT : MPa [gaug]

Temp °C	150#						300#						600#					
	SCPL1 LCB	SCPH2 WCB	SCPH21 WC6	SCPH61 C5	SCS13 CF8	SCS14A CF8M	SCPL1 LCB	SCPH2 WCB	SCPH21 WC6	SCPH61 C5	SCS13 CF8	SCS14A CF8M	SCPL1 LCB	SCPH2 WCB	SCPH21 WC6	SCPH61 C5	SCS13 CF8	SCS14A CF8M
-45~38	1.84	-	-	-	1.90	1.90	4.39	-	-	-	4.95	4.95	9.56	-	-	-	9.91	9.92
-5~38	1.84	1.96	1.99	1.99	1.90	1.90	4.39	5.10	5.16	5.16	4.95	4.95	9.56	10.20	10.32	10.32	9.91	9.92
50	1.81	1.92	1.92	1.92	1.84	1.84	4.72	5.00	5.10	5.16	4.77	4.80	9.45	10.01	10.22	10.32	9.56	9.62
100	1.72	1.76	1.76	1.76	1.56	1.61	4.50	4.63	4.88	5.14	4.08	4.21	9.01	9.27	9.74	10.29	8.17	8.43
150	1.57	1.57	1.57	1.57	1.39	1.47	4.40	4.51	4.63	5.01	3.62	3.85	8.78	9.04	9.26	10.03	7.26	7.69
200	1.40	1.40	1.40	1.40	1.25	1.37	4.26	4.38	4.54	4.88	3.27	3.56	8.53	8.75	9.09	9.75	6.54	7.12
250	1.20	1.20	1.20	1.20	1.16	1.20	4.05	4.16	4.44	4.62	3.04	3.34	8.11	8.33	8.88	9.26	6.10	6.67
300	1.01	1.01	1.01	1.01	1.01	1.01	3.76	3.87	4.23	4.23	2.91	3.15	7.53	7.74	8.48	8.48	5.80	6.32
350	0.84	0.84	0.84	0.84	0.84	0.84	3.59	3.69	4.01	4.01	2.81	3.03	7.18	7.38	8.04	8.04	5.60	6.07
375		0.73	0.73	0.73	0.73	0.73		3.64	3.88	3.88	2.77	2.96		7.28	7.75	7.75	5.54	5.93
400		0.64	0.64	0.64	0.64	0.64		3.44	3.65	3.65	2.74	2.91		6.89	7.31	7.31	5.48	5.81
425		0.55	0.55	0.55	0.55	0.55		2.88	3.50	3.44	2.71	2.87		5.74	7.01	6.91	5.42	5.72
450		0.47	0.47	0.47	0.47	0.47		1.99	3.38	3.08	2.68	2.81		4.00	6.75	6.17	5.37	5.61
475		0.37	0.37	0.37	0.37	0.37		1.35	3.16	2.58	2.65	2.73		2.70	6.32	5.17	5.30	5.46
500		0.28	0.28	0.28	0.28	0.28		0.88	2.77	2.02	2.60	2.67		1.75	5.55	4.04	5.20	5.37
525		0.18	0.18	0.18	0.18	0.18		0.51	2.02	1.53	2.19	2.57		1.03	4.04	3.07	4.77	5.15
538		0.13	0.15	0.15	0.15	0.15		0.34	1.63	1.34	2.18	2.53		0.72	3.26	2.69	4.55	5.06

Table 2-2 JIS

UNIT MPa [gaug]

Temp °C	10K	20K	30K		JIS40K	
	SCPH2	SCPH2	SCPH2	SCPH21	SCPH2	SCPH21
-5~120	1.37	3.33	4.99	4.99	6.66	6.66
~220	1.17	3.03	4.50	4.50	6.07	6.07
~300	0.98	2.84	4.21	4.21	5.58	5.58
~350		2.54	3.82	3.82	5.09	5.09
~400		2.25	3.33	3.72	4.50	4.99
~425		1.96	2.94	3.52	3.92	4.70
~450						4.41
~475						4.11
~490						3.92
~500						3.72
~510						3.52

Fig.1 TRIM TREATMENT / MATERIAL VS OPERATING PRESSURE - TEMPERATURE RATING

Fig. 1-1 METAL SEAT

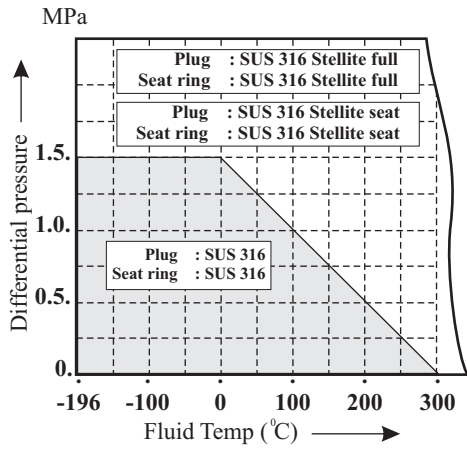


Fig. 1-2 SOFT SEAT (REINFORCED TEFLON)

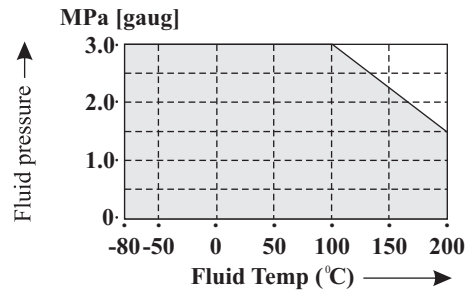


Fig. 1.3 SUS316 PRESSED BELLOWS

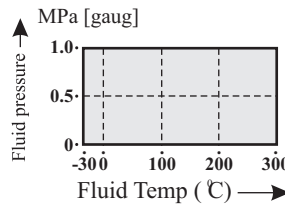


Fig. 1.4 SUS316 WELDED BELLOWS

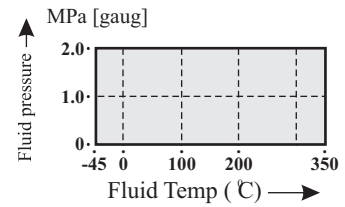


Fig. 1.5 BALANCE SEAL OPERATING PRESSURE - TEMPERATURE RATINGS

Fig. 1.5A REINFORCED TEFLON / SUS 316

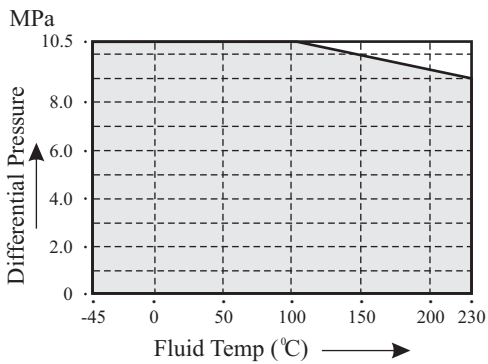


Fig. 1.5B Fig. GRAFOIL

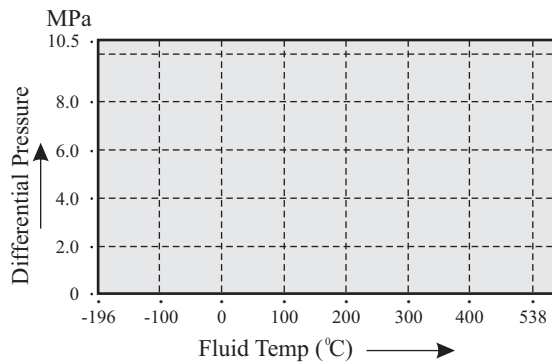


Fig.2 GLAND PACKING OPERATING PRESSURE-TEMPERATURE RATINGS

Fig. 2-1 REINFORCED TEFLON V-RING

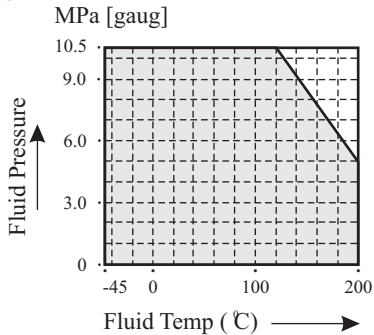


Fig. 2-2 TEFLON ASBESTOS

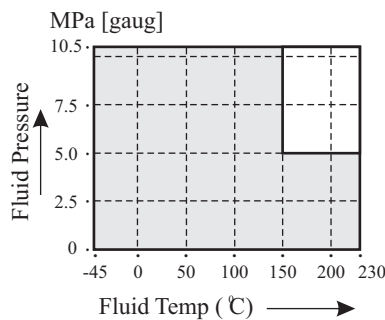


Fig. 2-3 GRAFOIL

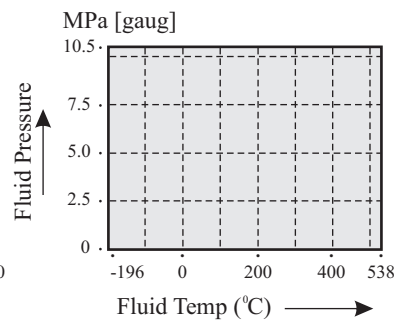


Fig.3 BODY SECTION VIEW

Fig. 3-1 BODY SIZE 4" (100mm) AND UNDER

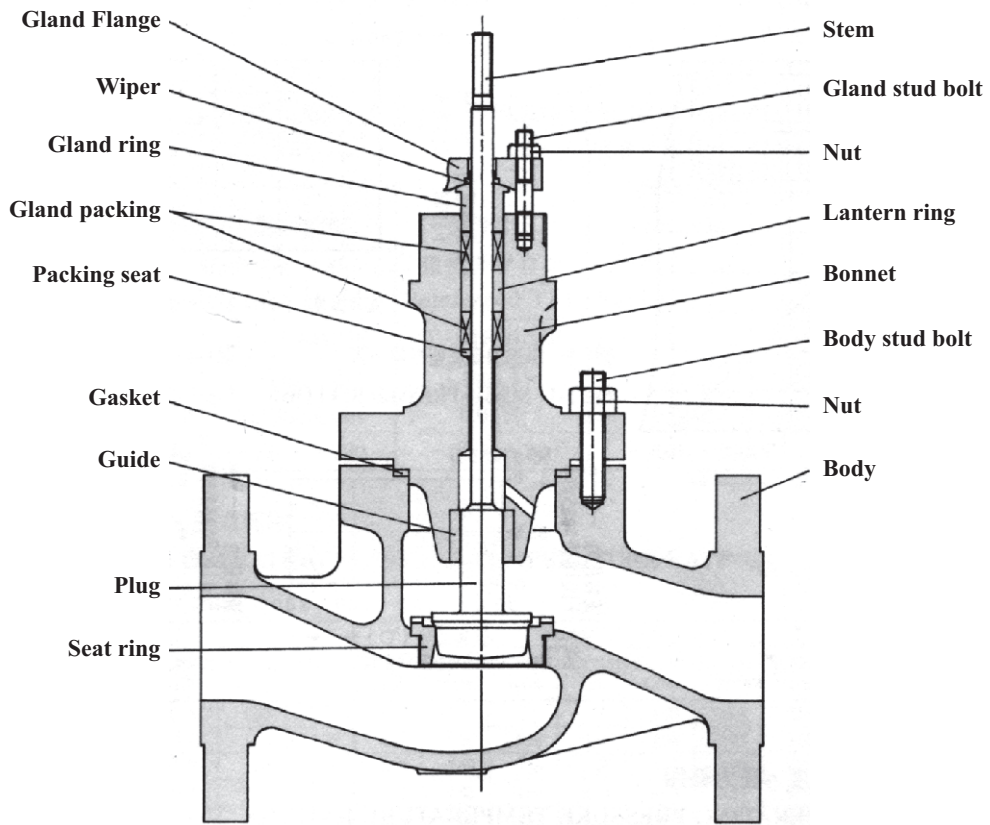
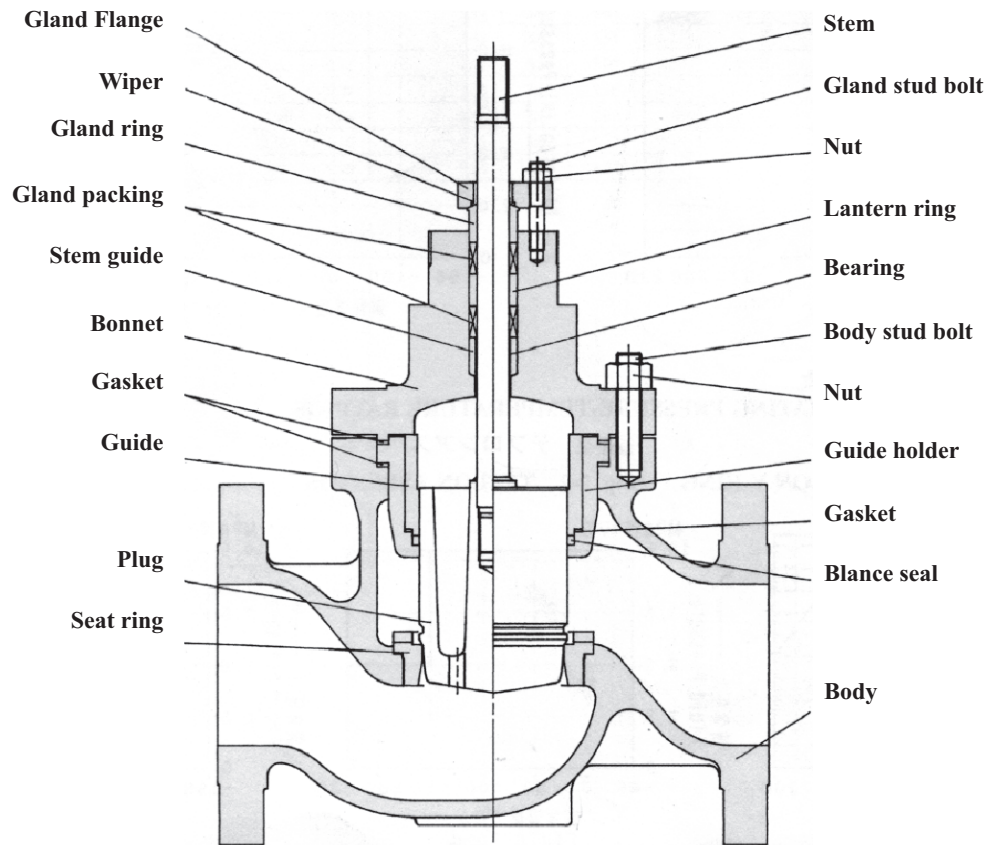


Fig. 3-2 BODY SIZE 5" (125 mm) AND OVER



Unbalance type has no balance seal and no balance hole in the plug.

Table 3 Cv VALUE, STROKE AND REDUCED PLUG MANUFACTURING RANGE

*① : Standard type Cv

*② : Large rated Cv

Valve size inch (mm)	Plug size inch (mm)	Rated Cv			mm stroke	
		P-port		Q-port ON-OFF	P-port	Q-port
		*①	Cv *②			
1/2 (15)	1/8 (6)	0.28	-	-	12	-
	3/16 (7)	0.52	-	-	12	-
	1/4 (8)	0.96	-	-	12	-
	3/8 (10)	2.5	-	-	20	-
	1/2 (15)	4	-	-	20	-
3/4 (20)	1/8 (6)	0.28	-	-	12	-
	3/16 (7)	0.52	-	-	12	-
	1/4 (8)	0.96	-	-	12	-
	3/8 (10)	2.5	-	-	20	-
	1/2 (15)	4	-	-	20	-
	3/4 (20)	8	-	10	20	16
1 (25)	3/8 (10)	2.5	-	-	20	-
	1/2 (15)	4	-	-	20	-
	3/4 (20)	8	-	-	20	-
	1 (25)	13	-	15	20	16
1 1/2 (40)	1 (25)	13	-	-	20	-
	1 1/4 (32)	20	-	-	20	-
	1 1/2 (40)	25	30	35	20	16

Note : ① In the case of Q-port, plug size is equal to valve size
 ② In the case of soft seat, minimum available plug size is 3/4 inch
 ③ Soft seat valve has P port EQ% plug.

Valve size inch (mm)	Plug size inch (mm)	Rated Cv			stroke mm	
		P-port		Q-port ON-OFF	P-port	Q-port
		*①	Cv *②			
2 (50)	1 1/4 (32)	20	-	-	20	-
	1 1/2 (40)	25	-	-	20	-
	2 (50)	45	50	55	20	16
2 1/2 (65)	1 1/2 (40)	25	-	-	30	-
	2 (50)	45	-	-	30	-
	2 1/2 (65)	72	85	95	30	20
3 (80)	2 (50)	45	-	-	30	-
	2 1/2 (65)	72	-	-	30	-
	3 (80)	100	125	135	30	20
4 (100)	2 1/2 (65)	72	-	-	40	-
	3 (80)	100	-	-	40	-
	4 (100)	175	200	220	40	30
5 (125)	3 (80)	100	-	-	50	-
	4 (100)	175	-	-	50	-
	5 (125)	280	310	330	50	40
6 (150)	4 (100)	175	-	-	50	-
	5 (125)	280	-	-	50	-
	6 (150)	365	425	460	50	40
8 (200)	5 (125)	280	-	-	70	-
	6 (150)	365	-	-	70	-
	8 (200)	640	700	720	70	60

4 Fig.4 FLOW CHARACTERISTICS

Fig.4-1 EQ% FLOW CHARACTERISTICS (STANDARD)

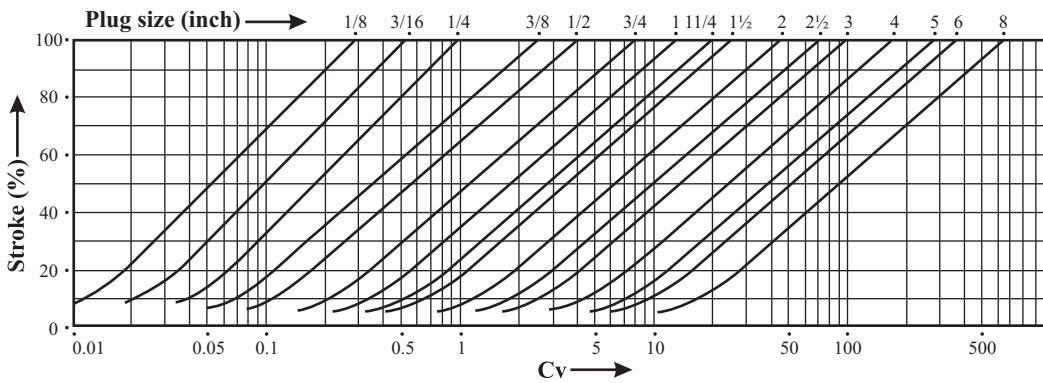


Fig.4-2 MODIFIED EQ% FLOW CHARACTERISTICS (LARGE RATED Cv)

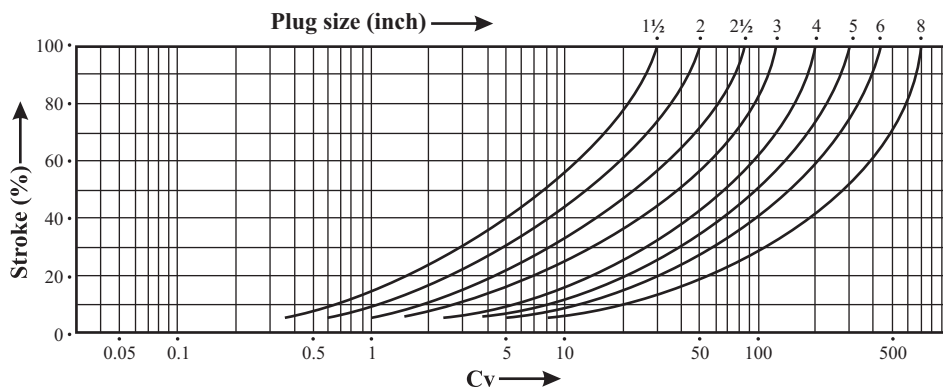


Table 4 ALLOWABLE PRESSURE DROPS (UNIT : MPa)

See pages 14-24 valve size-actuator size combinations

DA : Direct action (Air to valve shut)

RA : Reverse action (Air to valve open)

Table 4-1 DIAPHRAGM ACTUATOR (5200LA) / PACKING :REINFORCED TEFLON V-RING, TEFLON - ASBESTOS

Table 4-1A UNBALANCE TYPE PLUG

Actuator size	Air supply (off-balance) kPa [gauge]	Spring range kPa [gauge]	Seat-ring	Plug Size (inch)														
				1/8-3/8	1/2	3/4	1	1 1/4	1 1/2	2	2 1/2	3	4	5	6	8		
218	140 (20)	DA & RA 20~100	Metal seat	1.38	0.74	0.51	0.35	0.23	0.15	0.08	-	-	-	-	-	-		
			Soft seat	-	-	0.31	0.20	0.11	0.05	0.01	-	-	-	-	-	-		
			Q-port	-	-	0.36	0.24	-	0.08	0.03	-	-	-	-	-	-		
	300 (80)	DA & RA 80~200	Metal seat	7.52	3.96	2.98	2.15	1.43	1.02	0.64	-	-	-	-	-	-		
			Soft seat	-	-	2.42	1.76	1.18	0.83	0.51	-	-	-	-	-	-		
			Q-port	-	-	2.57	1.86	-	0.88	0.55	-	-	-	-	-	-		
	340 (120)	DA : 80 -200 RA 120~300	Metal seat	9.90	6.14	4.63	3.34	2.24	1.60	1.00	-	-	-	-	-	-		
			soft seat	-	-	3.00	2.79	1.88	1.35	0.85	-	-	-	-	-	-		
			Q-port	-	-	4.04	2.95	-	1.42	0.89	-	-	-	-	-	-		
270	140 (20)	DA & RA 20~100	Metal seat	2.53	1.31	0.97	0.70	0.45	0.31	0.19	0.12	0.08	-	-	-	-		
			soft seat	-	-	0.72	0.49	0.31	0.20	0.10	0.05	0.02	-	-	-	-		
			Q-port	-	-	0.78	0.54	-	0.23	0.12	0.07	0.03	-	-	-	-		
	300 (80)	DA & RA 80~200	Metal seat	9.90	6.75	5.08	3.68	2.46	1.76	1.11	0.74	0.52	-	-	-	-		
			soft seat	-	-	3.00	3.00	2.09	1.50	0.94	0.63	0.43	-	-	-	-		
			Q-port	-	-	4.46	3.26	-	1.57	0.99	0.63	0.46	-	-	-	-		
	340 (120)	DA : 80 -200 RA 120~300	Metal seat	-	9.90	7.84	5.68	3.80	2.73	1.73	1.15	0.81	-	-	-	-		
			soft seat	-	-	3.00	3.00	3.00	2.36	1.51	1.01	0.72	-	-	-	-		
			Q-port	5.18	-	6.86	5.06	-	2.46	1.57	1.05	0.75	-	-	-	-		
350	140 (20)	DA & RA 20~100	Metal seat	-	2.72	2.04	1.46	0.97	0.69	0.42	0.27	0.19	0.10	-	-	-		
			soft seat	-	-	1.62	1.17	0.77	0.53	0.31	0.20	0.13	0.06	-	-	-		
			Q-port	-	-	1.73	1.25	-	0.57	0.34	0.22	0.15	0.07	-	-	-		
	300 (80)	DA & RA 80~200	Metal seat	-	9.90	9.34	6.77	4.54	3.26	2.06	1.37	0.98	0.57	-	-	-		
			soft seat	-	-	3.00	3.00	3.00	2.84	1.81	1.22	0.86	0.50	-	-	-		
			Q-port	-	-	8.26	6.04	-	2.95	1.88	1.27	0.89	0.52	-	-	-		
450	140 (20)	DA & RA 20~100	Metal seat	-	-	-	2.71	1.81	1.29	0.81	0.53	0.37	0.21	0.13	0.09	0.03		
			soft seat	-	-	-	2.24	1.50	1.07	0.67	0.43	0.29	0.16	0.09	0.06	0.01		
			Q-port	-	-	-	2.36	-	1.13	0.71	0.46	0.31	0.18	0.10	0.07	0.01		
	300 (80)	DA & RA 80~200	Metal seat	-	-	-	9.91	7.97	5.72	3.63	2.43	1.74	1.01	0.66	0.46	0.24		
			soft seat	-	-	-	3.00	3.00	3.00	3.00	2.20	1.58	0.92	0.60	0.41	0.21		
			Q-port	-	-	-	9.90	-	5.25	3.36	2.27	1.62	0.94	0.62	0.43	0.21		
650	300 (80)	DA & RA 80~200	Metal seat	-	-	-	-	-	-	-	-	5.45	3.90	2.28	1.49	1.05	0.57	
			soft seat	-	-	-	-	-	-	-	-	-	3.00	3.00	2.13	1.40	0.99	0.56
			Q-port	-	-	-	-	-	-	-	-	-	-	-	-	-	-	-

Table 4-1B BALANCE TYPE PLUG (BODY SIZE :5" AND OVER)

Actuator size	Air supply (off-balance) kPa [gaug]	Spring range kPa [gaug]	Seat-ring	Plug size (inch)				
				3	4	5	6	8
450	140 (20)	DA & RA 20~100	Metal seat	0.98	0.49	0.49	0.31	-
			soft seat	0.67	0.26	0.19	0.10	-
			Q-port	0.74	0.32	0.26	0.15	-
	300 (80)	DA & RA 80~200	Metal seat	5.33	3.64	4.03	2.88	1.81
			soft seat	3.00	2.88	3.00	2.16	1.64
			Q-port	4.54	3.09	3.22	2.34	1.23
650	300 (80)	DA & RA 80~200	Metal seat	10.00	8.74	9.75	7.02	4.74
			soft seat	3.00	3.00	3.00	3.00	3.00
			Q-port	10.00	7.55	8.00	5.88	3.39

Table 4-2 DIAPHRAGM ACTUATOR (5200LA)/PACKING : GRAFOIL

Table 4-2A UNBALANCE TYPE PLUG

Actuator size	Air supply (off-balance) kPa [gaug]	Spring range kPa [gaug]	Seat-ring	Plug size (Inch)														
				1/8-3/8	1/2	3/4	1	1 1/4	1 1/2	2	2 1/2	3	4	5	6	8		
218	140 (20)	DA & RA 20~100	Metal seat	-	-	-	-	-	-	-	-	-	-	-	-	-	-	
			Soft seat	-	-	-	-	-	-	-	-	-	-	-	-	-	-	
			Q-port	-	-	-	-	-	-	-	-	-	-	-	-	-	-	
	300 (80)	DA & RA 80~200	Metal seat	4.49	2.35	1.77	1.27	0.83	0.59	0.36	-	-	-	-	-	-	-	
			Soft seat	-	-	1.38	0.99	0.65	0.44	0.26	-	-	-	-	-	-	-	
			Q-port	-	-	1.48	1.06	-	0.48	0.28	-	-	-	-	-	-	-	
	340 (120)	DA 80~200 RA 120~300	Metal seat	8.59	4.53	3.41	2.46	1.64	1.17	0.74	-	-	-	-	-	-	-	
			soft seat	-	-	2.79	2.03	1.36	0.97	0.60	-	-	-	-	-	-	-	
			Q-port	-	-	2.95	2.15	-	1.02	0.64	-	-	-	-	-	-	-	
270	140 (20)	DA & RA 20~100	Metal seat	-	-	-	-	-	-	-	-	-	-	-	-	-		
			Soft seat	-	-	-	-	-	-	-	-	-	-	-	-	-		
			Q-port	-	-	-	-	-	-	-	-	-	-	-	-	-		
	300 (80)	DA & RA 80~200	Metal seat	8.53	4.49	3.38	2.44	1.63	1.16	0.73	0.48	0.33	-	-	-	-		
			Soft seat	-	-	2.78	2.01	1.34	0.96	0.60	0.38	0.26	-	-	-	-		
			Q-port	-	-	2.93	2.13	-	1.01	0.63	0.41	0.28	-	-	-	-		
	340 (120)	DA 80~200 RA 120~300	Metal seat	9.90	8.12	6.13	4.43	2.97	2.13	1.34	0.89	0.63	-	-	-	-		
			soft seat	-	-	3.00	3.00	2.54	1.82	1.16	0.76	0.54	-	-	-	-		
			Q-port	-	-	5.38	3.93	-	1.91	1.21	0.80	0.57	-	-	-	-		
350	140 (20)	DA & RA 20~100	Metal seat	0.93	0.46	0.33	0.23	0.14	0.09	0.04	0.02	0.01	-	-	-	-		
			Soft seat	-	-	0.16	0.09	0.03	-	-	-	-	-	-	-	-		
			Q-port	-	-	0.21	0.12	-	0.02	-	-	-	-	-	-	-		
	300 (80)	DA & RA 80~200	Metal seat	9.90	9.90	7.63	5.53	3.71	2.66	1.68	1.12	0.79	0.46	-	-	-		
			Soft seat	-	-	3.00	3.00	3.00	2.31	1.46	0.98	0.70	0.39	-	-	-		
			Q-port	-	-	6.74	4.92	-	2.40	1.52	1.02	0.73	0.41	-	-	-		
450	140 (20)	DA & RA 20~100	Metal seat	-	-	-	1.20	0.79	0.56	0.34	0.22	0.15	0.08	0.05	0.03	-		
			soft seat	-	-	-	0.93	0.61	0.41	0.25	0.15	0.09	0.03	0.01	-	-		
			Q-port	-	-	-	1.00	-	0.45	0.26	0.17	0.11	0.05	0.02	0.01	-		
	300 (80)	DA & RA 80~200	Metal seat	-	-	-	9.90	6.95	4.99	3.17	2.12	1.51	0.08	0.57	0.40	0.17		
			Soft seat	-	-	-	3.00	3.00	3.00	2.83	1.91	1.36	0.79	0.51	0.35	0.15		
			Q-port	-	-	-	9.30	-	4.57	2.92	1.97	1.40	0.82	0.53	0.37	0.15		
650	300 (80)	DA & RA 80~200	Metal seat	-	-	-	-	-	-	-	-	4.85	3.47	2.03	1.33	0.93	0.51	
			Soft seat	-	-	-	-	-	-	-	-	-	3.00	3.00	1.89	1.24	0.87	0.49
			Q-port	-	-	-	-	-	-	-	-	-	-	-	-	-	-	-

Table 4-2B BALANCE TYPE PLUG (BODY SIZE :5" AND OVER)

Actuator size	Air supply (off-balance) kPa [gaug]	Spring range kPa [gaug]	Seat-ring	Plug size (inch)				
				3	4	5	6	8
450	140 (20)	DA & RA 20~100	Metal seat	-	-	-	-	-
			Soft seat	-	-	-	-	-
			Q-port	-	-	-	-	-
	300 (80)	DA & RA 80~200	Metal seat	3.77	1.82	1.64	0.94	-
			Soft seat	2.75	1.48	1.29	-	-
			Q-port	3.17	1.48	1.22	0.67	-
650	300 (80)	DA & RA 80~200	Metal seat	10.00	7.03	7.55	5.19	2.80
			Soft seat	3.00	3.00	3.00	3.00	2.75
			Q-port	9.41	6.03	6.12	4.30	1.94

Table 4-3 SOLID STATE ELECTRONIC ACTUATOR (3500 LB, 3600 LA) & ELECTRONIC MOTOR ACTUATOR (3400 LA)

/ PACKING : REINFORCED TEFLON V-RING, TEFLON-ASBESTOS

Table 4-3A UNBALANCE TYPE PLUG

Actuator size	Seat-ring	Plug size (inch)												
		1/8~3/8	1/2	3/4	1	1 ¼	1 ½	2	2½	3	4	5	6	8
34A1LA 35A1LB 36A1LA	Metal seat	3.18	1.66	1.24	0.88	0.58	0.40	0.25	-	-	-	-	-	-
	Soft seat	-	-	0.93	0.66	0.41	0.27	0.16	-	-	-	-	-	-
	Q-port	-	-	1.01	0.72	-	0.31	0.18	-	-	-	-	-	-
34A2LA 35A2LB 36A2LA	Metal seat	9.79	5.17	3.88	2.80	1.87	1.33	0.84	-	-	-	-	-	-
	Soft seat	-	-	2.94	2.33	1.57	1.12	0.70	-	-	-	-	-	-
	Q-port	-	-	3.38	2.46	-	1.18	0.74	-	-	-	-	-	-
34B1LA 35B1LB 36B1LA	Metal seat	9.90	7.86	5.92	4.29	2.87	2.05	1.29	0.86	0.61	0.35	-	-	-
	soft seat	-	-	2.94	2.94	2.45	1.77	1.12	0.74	0.52	0.29	-	-	-
	Q-port	-	-	5.21	3.80	-	1.84	1.17	0.77	0.55	0.30	-	-	-
34B2LA 35B2LB 36B2LA	Metal seat	-	-	-	7.40	4.97	3.56	2.26	1.51	1.07	0.62	0.40	0.27	-
	Soft seat	-	-	-	2.94	2.94	2.94	2.00	1.34	0.95	0.55	0.35	0.25	-
	Q-port	-	-	-	6.62	-	3.25	2.07	1.38	0.99	0.57	0.36	0.26	-
34C1LA 35C1LB 36C1LA	Metal seat	-	-	-	-	-	-	3.00	2.01	1.43	0.83	0.54	0.37	-
	Soft seat	-	-	-	-	-	-	2.68	1.80	1.29	0.76	0.48	0.33	-
	Q-port	-	-	-	-	-	-	2.77	1.86	1.33	0.77	0.50	0.34	-
34C2LA 35C2LB 36C2LA	Metal seat	-	-	-	-	-	-	-	3.07	2.20	1.28	0.83	0.59	0.30
	soft seat	-	-	-	-	-	-	-	2.79	2.00	1.17	0.77	0.54	0.28
	Q-port	-	-	-	-	-	-	-	2.87	2.06	1.21	0.78	0.55	0.29

Table 4-2B BALANCE TYPE PLUG (BODY SIZE :5" AND OVER)

Actuator size	Seat-ring	Plug size (inch)				
		3	4	5	6	8
34B2LA 35B2LB 36B2LA	Metal seat	3.35	2.21	2.41	1.71	0.98
	Soft seat	2.62	1.70	1.70	1.22	0.86
	Q-port	2.81	1.82	1.87	1.34	0.63
34C1LA 35C1LB 36C1LA	Metal seat	4.50	3.04	3.34	2.39	1.46
	Soft seat	3.00	2.38	2.42	1.75	1.31
	Q-port	3.81	2.56	2.64	1.92	0.98
34C2LA 35C2LB 36C2LA	Metal seat	7.17	4.97	5.52	3.96	2.58
	soft seat	3.00	3.00	3.00	3.00	2.35
	Q-port	6.14	4.24	4.47	3.26	1.80

Table 4-4 SOLID STATE ELECTRONIC ACTUATOR (3500 LB, 3600 LA) & ELECTRONIC MOTOR ACTUATOR (3400 LA)

/ PACKING : GRAFOIL

Table 4-4A UNBALANCE TYPE PLUG

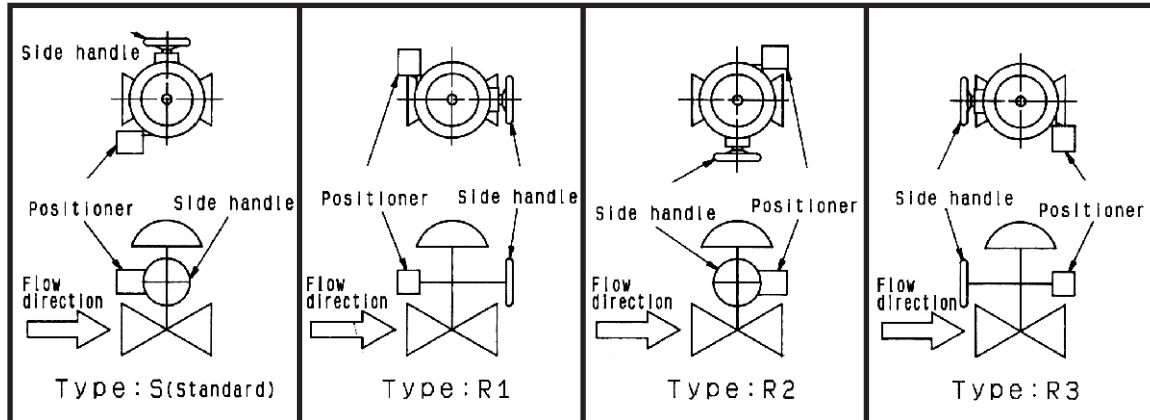
Actuator size	Seat-ring	Plug size (inch)												
		1/8-3/8	1/2	3/4	1	1 ¼	1 ½	2	2½	3	4	5	6	8
34A1LB 35A1LB 36A1LA	Metal seat	0.71	0.33	0.24	0.16	0.09	0.05	0.02	-	-	-	-	-	-
	Soft seat	-	-	0.08	0.03	-	-	-	-	-	-	-	-	-
	Q-port	-	-	0.12	0.06	-	-	-	-	-	-	-	-	-
34A2LA 35A2LB 36A2LA	Metal seat	7.32	3.85	2.89	2.09	1.39	0.99	0.62	-	-	-	-	-	-
	Soft seat	-	-	2.35	1.71	1.14	0.80	0.49	-	-	-	-	-	-
	Q-port	-	-	2.50	1.80	-	0.85	0.53	-	-	-	-	-	-
34B1LA 35B1LB 36B1LA	Metal seat	9.90	6.02	4.53	3.28	2.19	1.56	0.98	0.65	0.46	0.26	-	-	-
	soft seat	-	-	2.94	2.74	1.84	1.32	0.83	0.55	0.38	0.21	-	-	-
	Q-port	-	-	3.92	2.88	-	1.39	0.87	0.58	0.40	0.23	-	-	-
34B2LA 35B2LB 36B2LA	Metal seat	-	-	-	6.18	4.14	2.97	1.87	1.26	0.89	0.52	0.33	0.23	-
	Soft seat	-	-	-	2.94	2.94	2.59	1.65	1.11	0.78	0.45	0.28	0.20	-
	Q-port	-	-	-	5.51	-	2.70	1.72	1.15	0.81	0.47	0.29	0.21	-
34C1LA 35C1LB 36C1LA	Metal seat	-	-	-	-	-	-	2.62	1.76	1.25	0.73	0.47	0.32	-
	Soft seat	-	-	-	-	-	-	2.33	1.57	1.12	0.65	0.42	0.28	-
	Q-port	-	-	-	-	-	-	2.41	1.62	1.16	0.67	0.43	0.29	-
34C2LA 35C2LB 36C2LA	Metal seat	-	-	-	-	-	-	-	2.59	1.84	1.08	0.69	0.49	0.26
	soft seat	-	-	-	-	-	-	-	2.34	1.68	0.98	0.64	0.44	0.23
	Q-port	-	-	-	-	-	-	-	2.41	1.73	1.01	0.66	0.46	0.23

Table 4-4B BALANCE TYPE PLUG (BODY SIZE :5" AND OVER)

Actuator size	Seat-ring	Plug size (inch)				
		3	4	5	6	8
34B2LA 35B2LB 36B2LA	Metal seat	1.74	0.35	-	-	-
	Soft seat	-	-	-	-	-
	Q-port	1.40	0.20	-	-	-
34C1LA 35C1LB 36C1LA	Metal seat	2.91	1.20	0.94	0.43	-
	Soft seat	-	-	-	-	-
	Q-port	2.42	0.94	0.63	0.24	-
34C2LA 35C2LB 36C2LA	Metal seat	5.64	3.18	3.18	2.04	0.53
	soft seat	-	-	-	-	-
	Q-port	4.79	2.67	2.50	1.62	0.29

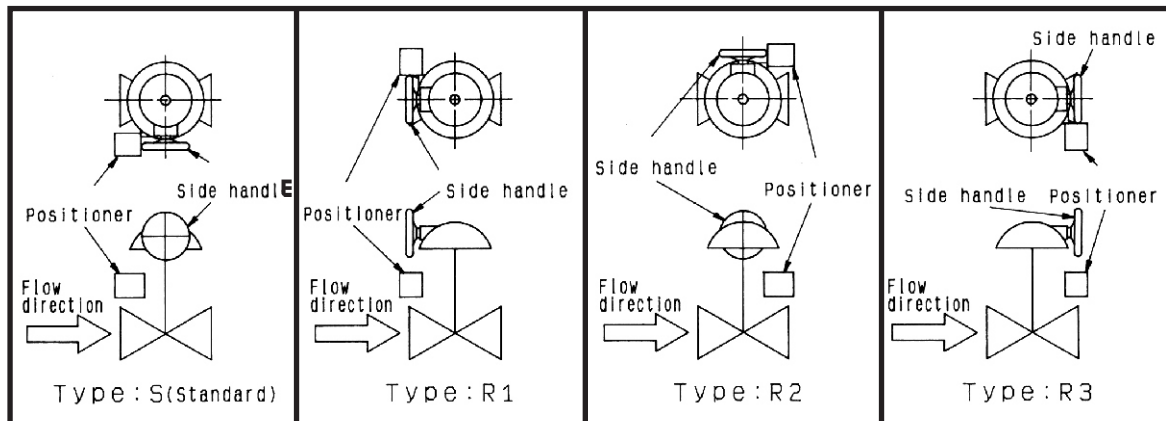
Fig.5 ACTUATOR MOUNTING FORMS FOR 5200 LA

Fig.5-1 ACTUATOR SIZE : 218-450



Note : Type 'S' is automatically applied, unless otherwise specified.

Fig.5-2 ACTUATOR SIZE : 650



Note : Type 'S' is automatically applied, unless otherwise specified.

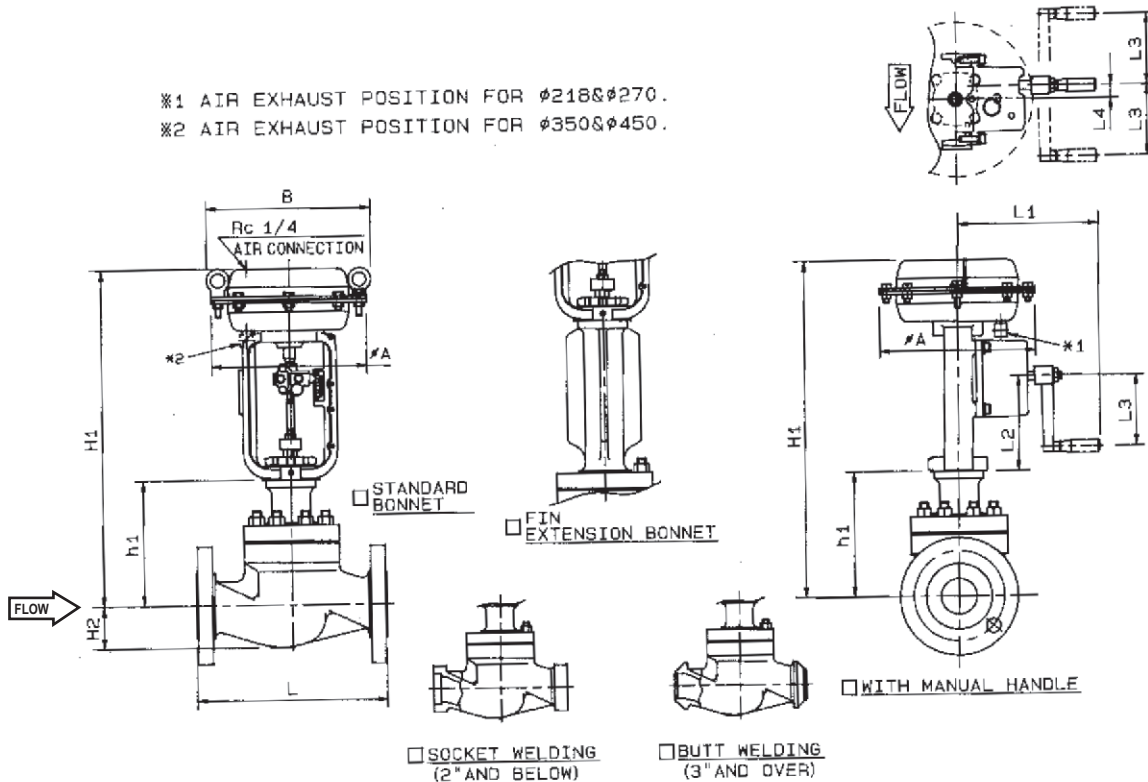
Table 5 NET WEIGHT OF STANDARD VALVE AND ACTUATOR COMBINED (UNIT :Kg)

Only standard type are represented. Weight of accessories, a handwheel and the like are not included.

Valve size inch (mm)	Actuator type & size		5200 LA Diaphragm actuator							Solid state electronic & Electric motor actuator		
	Body rating		218	270	350	450S	450L	650S	650L	35A1LB - 35A2LB 36A1LA - 36A2LA 34A1LA - 34A2LA	35B1LB - 35B2LB 36B1LA - 36B2LA 34B1LA - 34B2LA	35C1LB - 35C2LB 36C1LA - 36C2LA 34C1LA - 34C2LA
	ANSI	JIS										
1/2 (15)	150 #	10K	18	25	41	-	-	-	-	17	24	-
	300 #	20,30K	19	26	42	-	-	-	-	18	25	-
	600 #	40K	21	28	44	-	-	-	-	20	27	-
3/4 (20)	150 #	10K	18	25	41	-	-	-	-	17	24	-
	300 #	20,30K	19	26	42	-	-	-	-	18	25	-
	600 #	40K	21	28	44	-	-	-	-	20	27	-
1 (25)	150 #	10K	18	25	41	-	-	-	-	17	24	-
	300 #	20,30K	19	26	42	-	-	-	-	18	25	-
	600 #	40K	21	28	44	-	-	-	-	20	27	-
1½ (40)	150 #	10K	25	32	48	83	-	-	-	24	31	-
	300 #	20,30K	31	38	54	90	-	-	-	30	37	-
	600 #	40K	39	46	62	97	-	-	-	38	45	-
2 (50)	150 #	10K	32	39	55	90	-	-	-	31	38	-
	300 #	20,30K	37	44	60	95	-	-	-	36	43	-
	600 #	40K	42	49	65	100	-	-	-	41	48	-
2½ (65)	150 #	10K	-	46	62	97	-	-	-	-	45	-
	300 #	20,30K	-	51	67	105	-	-	-	-	50	-
	600 #	40K	-	66	82	120	-	-	-	-	65	-
3 (80)	150 #	10K	-	56	72	110	-	-	-	-	55	90
	300 #	20,30K	-	66	82	120	-	-	-	-	65	100
	600 #	40K	-	86	100	140	-	-	-	-	85	120
4 (100)	150 #	10K	-	-	82	120	-	240	-	-	65	100
	300 #	20,30K	-	-	97	135	-	255	-	-	80	115
	600 #	40K	-	-	132	170	-	290	-	-	115	150
5 (125)	150 #	10K	-	-	-	-	155	250	-	-	100	135
	300 #	20,30K	-	-	-	-	180	280	-	-	125	160
	600 #	40K	-	-	-	-	230	330	-	-	175	210
6 (150)	150 #	10K	-	-	-	-	200	300	-	-	145	180
	300 #	20,30K	-	-	-	-	230	330	-	-	175	210
	600 #	40K	-	-	-	-	280	380	-	-	225	260
8 (200)	150 #	10K	-	-	-	-	270	-	440	-	-	250
	300 #	20,30K	-	-	-	-	320	-	450	-	-	300
	600 #	40K	-	-	-	-	440	-	570	-	-	420

GLOBE - VALVE *DIRECT ACTION*

※1 AIR EXHAUST POSITION FOR $\phi 218$ & $\phi 270$.
 ※2 AIR EXHAUST POSITION FOR $\phi 350$ & $\phi 450$.



DIMENSIONS

UNIT : mm

VALVE SIZE	STANDARD								FIN EXTENSION BONNET		ACTUATOR							CODE NO.	
	ANSI 150#RF JPI		ANSI 300#RF JPI		ANSI 600#RF JPI		ANSI 300#SW JPI		ANSI 300#RTJ JPI		ANSI 600#SW JPI		ANSI 600#RTJ JPI		WITH MANUAL HANDLE				
	150#RF JIS 10KRF	300#RF JIS 20KRF	600#RF JIS 40KRF	300#BW JIS 30#BW	300#RTJ JIS 30#RTJ	600#SW JIS 600#SW	600#RTJ JIS 600#RTJ	H2	h1	H1	h1	H1	SIZE	A	B	L1	L2		L3
90 <input type="checkbox"/> 1/2" (15A)	184	194	206	206	206	206	206	32	129	430	229	530	218	231	196	133-113	100	18.5	5221LA
										525		625	270	283	230	165-145	100	27.5	5227LA
											560		660	350	367	230	183-163	100	27.5
91 <input type="checkbox"/> 3/4" (20A)	184	194	206	206	206	206	206	32	129	430	229	530	218	231	196	133-113	100	18.5	5221LA
										525		625	270	283	230	165-145	100	27.5	5227LA
											560		660	350	367	230	183-163	100	27.5
01 <input type="checkbox"/> 1" (25A)	184	197	210	210	210	210	210	36	129	430	229	530	218	231	196	133-113	100	18.5	5221LA
										525		625	270	283	230	165-145	100	27.5	5227LA
											560		660	350	367	230	183-163	100	27.5
93 <input type="checkbox"/> 1 1/2" (40A)	222	235	251	251	248	251	251	58	175	475	325	625	218	231	196	133-113	100	18.5	5221LA
										570		720	270	283	230	165-145	100	27.5	5227LA
											605		755	350	367	230	183-163	100	27.5
02 <input type="checkbox"/> 2" (50A)	254	267	286	286	283	286	289	62	175	475	325	625	218	231	196	133-113	100	18.5	5221LA
										570		720	270	283	230	165-145	100	27.5	5227LA
											605		755	350	367	230	183-163	100	27.5
94 <input type="checkbox"/> 2 1/2" (65A)	276	292	311	311	308	311	314	75	200	475	350	745	270	283	230	165-135	100	27.5	5227LA
										595		780	350	367	230	183-153	100	27.5	5235LA
											630		845	450	472	336	220-190	160	32
03 <input type="checkbox"/> 3" (80A)	298	317	337	317	333	337	340	85	200	595	350	745	270	283	230	165-135	100	27.5	5227LA
										630		780	350	367	230	183-153	100	27.5	5235LA
											695		845	450	472	336	220-190	160	32
04 <input type="checkbox"/> 4" (100A)	352	368	394	368	384	394	397	105	245	675	395	825	350	367	230	183-143	100	27.5	5235LA
										740		890	450	472	336	220-180	160	32	524SLA

* FLANGE IS ACCORDING TO THE STANDARD WHICH IS DESCRIBED ON SPECIFICATION SHEET.

NOTE :

DRAWING No.

E-50 1T-5200LA-D-^N/_S

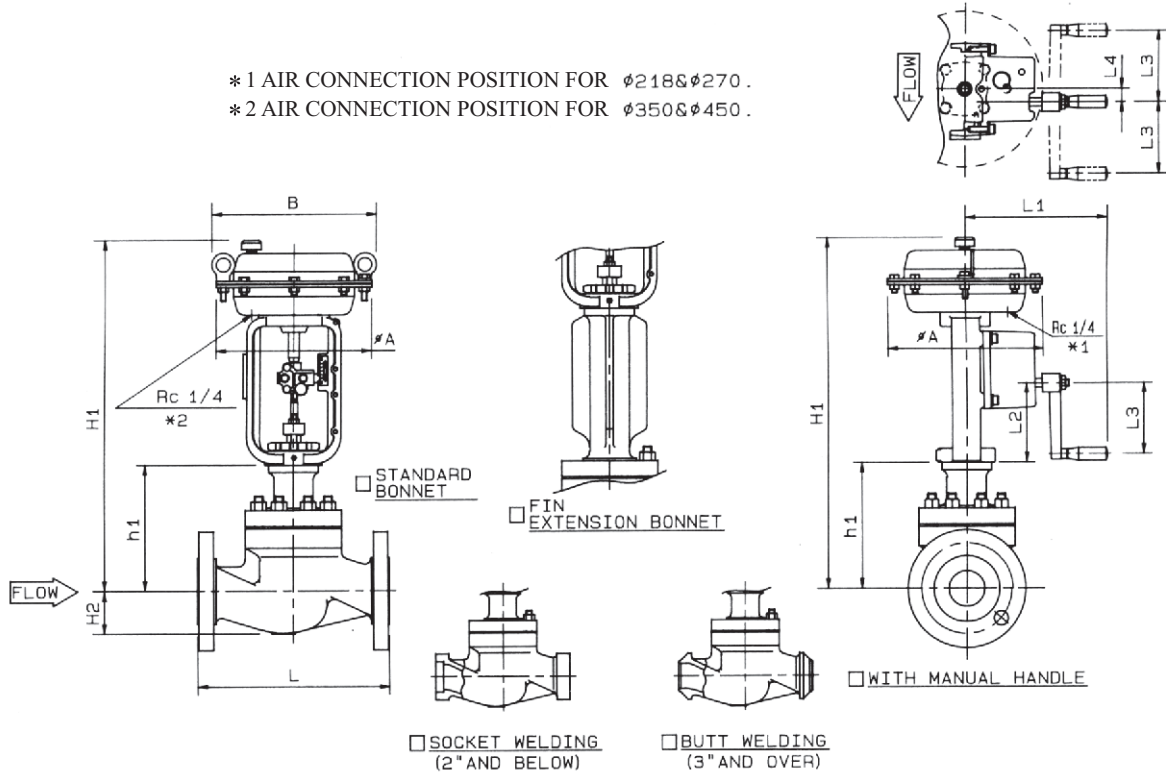
REV

E

KOSO

GLOBE - VALVE *REVERSE ACTION*

* 1 AIR CONNECTION POSITION FOR $\phi 218$ & $\phi 270$.
 * 2 AIR CONNECTION POSITION FOR $\phi 350$ & $\phi 450$.



DIMENSIONS

UNIT : mm

VALVE SIZE	FACE TO FACE : L								H2	STANDARD BONNET		FIN EXTENSION BONNET		ACTUATOR							
	<input type="checkbox"/> ANSI 150#RF	<input type="checkbox"/> ANSI 300#RF	<input type="checkbox"/> ANSI 600#RF	<input type="checkbox"/> ANSI 300#SW	<input type="checkbox"/> ANSI 300#RTJ	<input type="checkbox"/> ANSI 600#SW	<input type="checkbox"/> ANSI 600#RTJ	<input type="checkbox"/> ANSI 600#RTJ		h1	H1	h1	H1	WITH MANUAL HANDLE				CODE NO.			
	<input type="checkbox"/> JPI 150#RF	<input type="checkbox"/> JPI 300#RF	<input type="checkbox"/> JPI 600#RF	<input type="checkbox"/> JPI 300#BW	<input type="checkbox"/> JPI 300#RTJ	<input type="checkbox"/> JPI 600#BW	<input type="checkbox"/> JPI 600#RTJ	SIZE						A	B	L1	L2		L3	L4	
90 <input type="checkbox"/> 1/2" (15A)	184	194	206	206	206	206	206	206	32	129	470	565	600	570	218	231	196	113-133	100	18.5	5221LA
											570	665	700	270	283	230	118-138	100	27.5	5227LA	
												700	350	367	230	120-140	100	27.5	5235LA		
91 <input type="checkbox"/> 3/4" (20A)	184	194	206	206	206	206	206	206	32	129	470	565	600	570	218	231	196	113-133	100	18.5	5221LA
											570	665	700	270	283	230	118-138	100	27.5	5227LA	
												700	350	367	230	120-140	100	27.5	5235LA		
01 <input type="checkbox"/> 1" (25A)	184	197	210	210	210	210	210	210	36	129	470	565	600	570	218	231	196	113-133	100	18.5	5221LA
											570	665	700	270	283	230	118-138	100	27.5	5227LA	
												700	350	367	230	120-140	100	27.5	5235LA		
93 <input type="checkbox"/> 1 1/2" (40A)	222	235	251	251	248	251	251	251	58	175	515	645	710	665	218	231	196	113-133	100	18.5	5221LA
											610	795	860	270	283	230	118-138	100	27.5	5227LA	
											645	860	930	350	367	230	120-140	100	27.5	5235LA	
											710	860	930	450	472	336	161-181	160	32	524SLA	
02 <input type="checkbox"/> 2" (50A)	254	267	286	286	283	286	289	289	62	175	515	645	710	665	218	231	196	113-133	100	18.5	5221LA
											610	795	860	270	283	230	118-138	100	27.5	5227LA	
											645	860	930	350	367	230	120-140	100	27.5	5235LA	
											710	860	930	450	472	336	161-181	160	32	524SLA	
94 <input type="checkbox"/> 2 1/2" (65A)	276	292	311	311	308	311	314	314	75	200	635	775	835	785	270	283	230	118-148	100	27.5	5227LA
											670	820	885	350	367	230	120-150	100	27.5	5235LA	
											735	885	930	450	472	336	161-191	160	32	524SLA	
												885	930	450	472	336	161-191	160	32	524SLA	
03 <input type="checkbox"/> 3" (80A)	298	317	337	317	333	337	340	340	85	200	635	775	835	785	270	283	230	118-148	100	27.5	5227LA
											670	820	885	350	367	230	120-150	100	27.5	5235LA	
											735	885	930	450	472	336	161-191	160	32	524SLA	
04 <input type="checkbox"/> 4" (100A)	352	368	394	368	384	394	397	397	105	245	715	865	930	865	350	367	230	120-160	100	27.5	5235LA
											780	930	930	450	472	336	161-201	160	32	524SLA	
												930	930	450	472	336	161-201	160	32	524SLA	

* FLANGE IS ACCORDING TO THE STANDARD WHICH IS DESCRIBED ON SPECIFICATION SHEET.

NOTE :

DRAWING No.

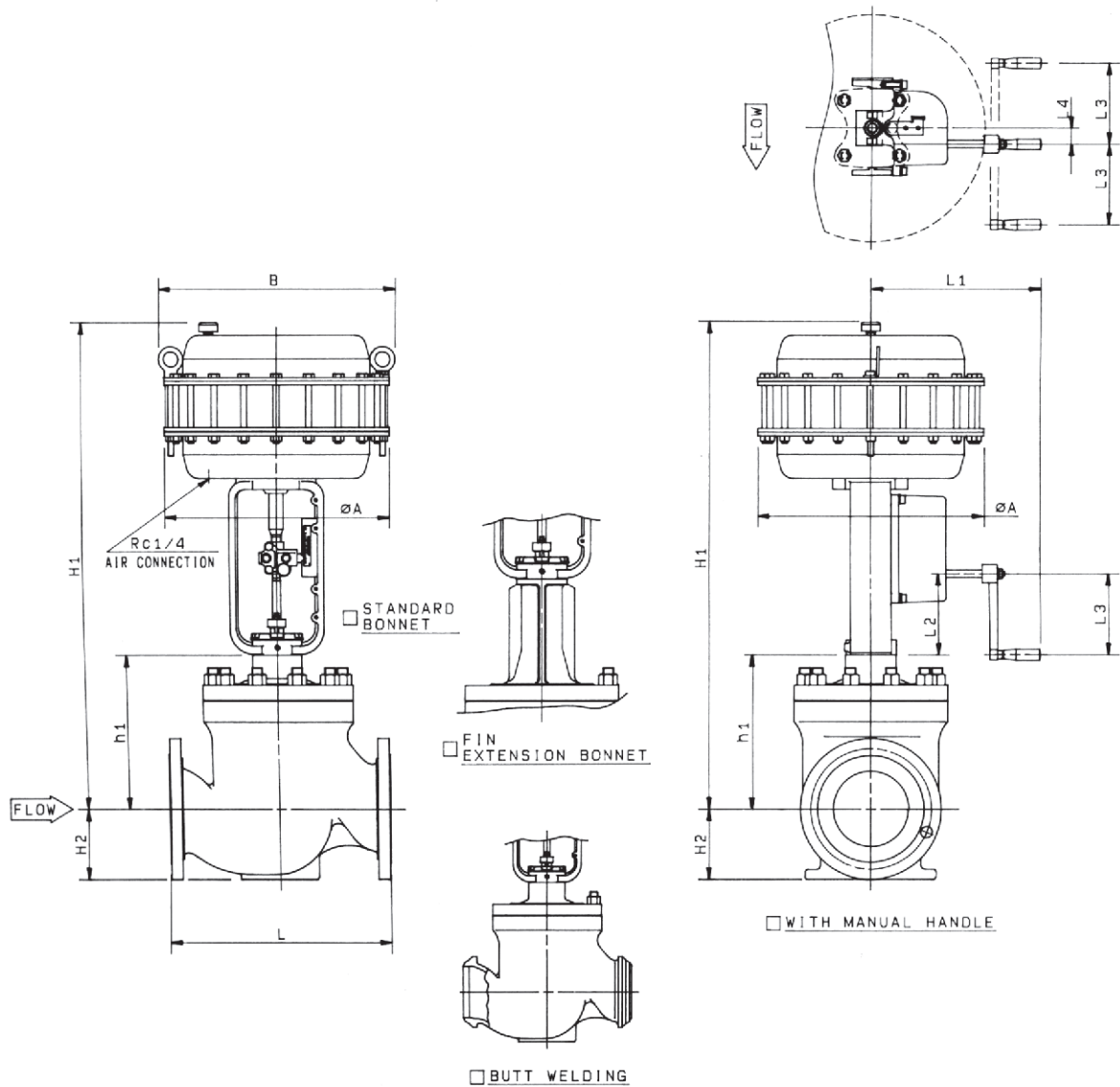
E-50 1T-5200LA-R-^N/_S

REV

E

KOSO

GLOBE - VALVE *REVERSE ACTION*



DIMENSIONS

UNIT :mm

VALVE SIZE	<input type="checkbox"/> ANSI 150#RF <input type="checkbox"/> JPI 150#RF <input type="checkbox"/> JIS 10KRf									<input type="checkbox"/> ANSI1300# <input type="checkbox"/> JPI300# <input type="checkbox"/> JIS20K RF <input type="checkbox"/> JIS30K RF <input type="checkbox"/> 10530 RF			<input type="checkbox"/> ANSI1600# <input type="checkbox"/> JPI600# <input type="checkbox"/> JIS40K RF			<input type="checkbox"/> STANDARD BONNET		<input type="checkbox"/> FIN EXTENSION BONNET		ACTUATOR					
	CODE NO.		<input type="checkbox"/> RF <input type="checkbox"/> BW		<input type="checkbox"/> RTJ		<input type="checkbox"/> RF <input type="checkbox"/> BW		<input type="checkbox"/> RTJ				SIZE		WITH MANUAL HANDLE				CODE NO.						
	L	H2	L	L	H2	L	L	H2	h1	H1	h1	H1	A	B	L1	L2	L3	L4							
<input type="checkbox"/> 5" (125A)	403	130	425	441	140	460	463	170	285	960	435	1110	450	472	336	161~211		160	32	524LLA					
<input type="checkbox"/> 6" (150A)	451	145	473	489	165	508	511	180	290	965	440	1115				181~251									
<input type="checkbox"/> 8" (200A)	543	180	568	584	195	610	613	215	355	1050	505	1200													

* FLANGE IS ACCORDING TO THE STANDARD WHICH IS DESCRIBED ON SPECIFICATION SHEET.

NOTE :

DRAWING No.

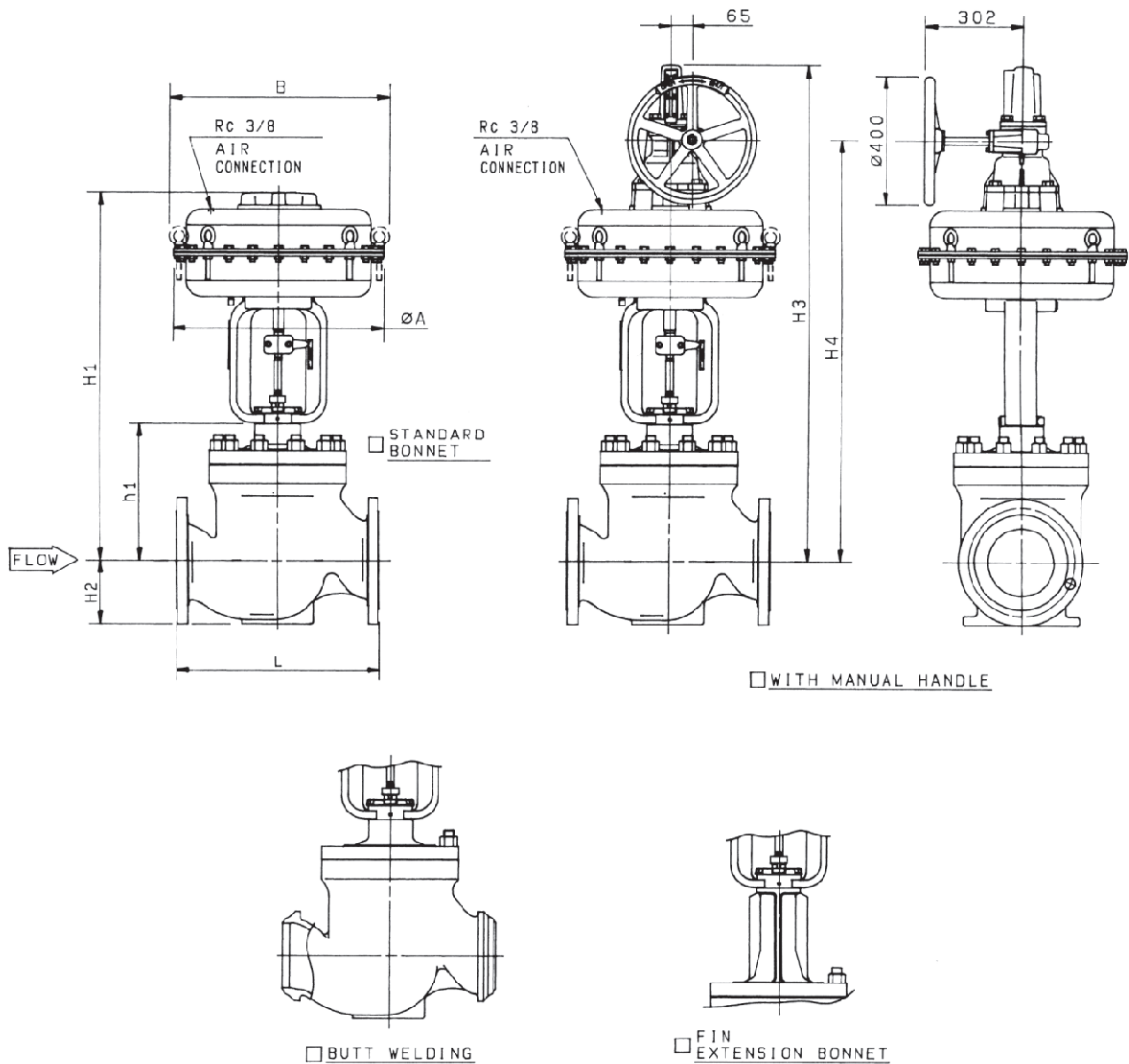
E-501T-524LLA-R-^N_S

REV

D

KOSO

GLOBE - VALVE *DIRECT ACTION*



DIMENSIONS

UNIT :mm

VALVE SIZE	ANSI 150#RF		ANSI 300#			ANSI 600#			STANDARD BONNET		FIN EXTENSION BONNET		ACTUATOR				CODE NO.				
	CODE NO.	L	H2	RF		L	L	H2	RF		h1	H1	h1	H1	WITH MANUAL HANDLE			H3	H4	H3	H4
				BW	RTJ				BW	RTJ					ST.D BONNET	FIN/EXT BONNET					
05	5" (125A)	403	130	425	441	140	460	463	170	285	1005	435	1155	650	678	1405	1170	1555	1320	526SLA	
06	6" (150A)	451	145	473	489	165	508	511	180	290	1010	440	1160	650	678	1410	1175	1560	1325	526SLA	

* FLANGE IS ACCORDING TO THE STANDARD WHICH IS DESCRIBED ON SPECIFICATION SHEET.

NOTE :

DRAWING No.

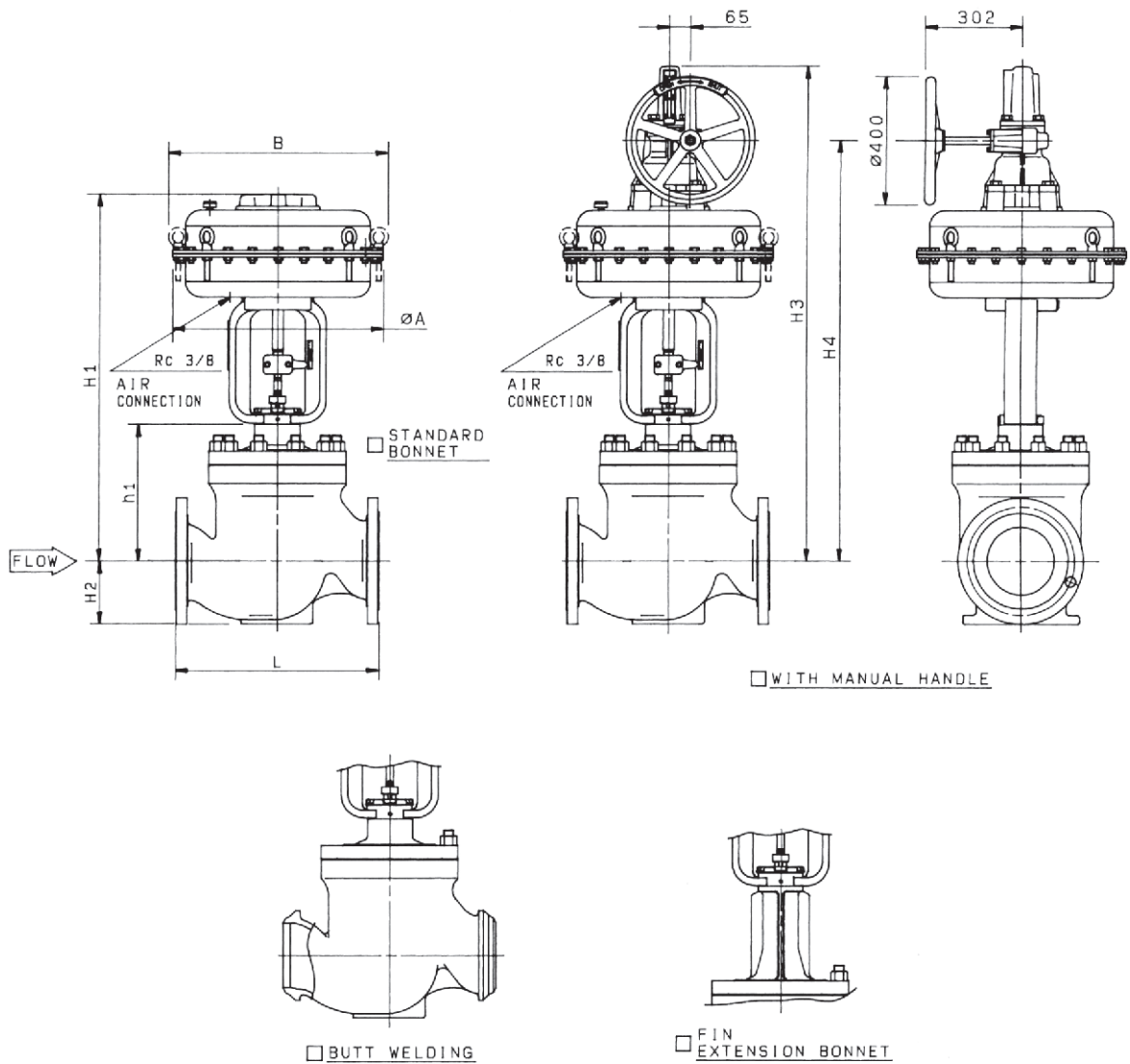
E-50 1T-526SLA-D-^N_S

REV

A

KOSO

GLOBE - VALVE *REVERSE ACTION*



DIMENSIONS

UNIT : mm

VALVE SIZE	ACTUATOR																		CODE NO.																	
	ANSI 150#RF									ANSI 300#										ANSI 600#									STANDARD BONNET				FIN EXTENSION BONNET			
	ANSI 150#RF			ANSI 300#			ANSI 600#			STANDARD BONNET		FIN EXTENSION BONNET		WITH MANUAL HANDLE		ST.D BONNET		FIN/EXT BONNET																		
CODE NO.	L	H2	L	L	H2	L	L	H2	h1	H1	h1	H1	A	B	H3	H4	H3	H4																		
05 <input type="checkbox"/> 5" (125A)	403	130	425	441	140	460	463	170	285	1005	435	1155	650	678	1405	1170	1555	1320	526SLA																	
06 <input type="checkbox"/> 6" (150A)	451	145	473	489	165	508	511	180	290	1010	440	1160	650	678	1410	1175	1560	1325	526SLA																	

* FLANGE IS ACCORDING TO THE STANDARD WHICH IS DESCRIBED ON SPECIFICATION SHEET.

NOTE :

DRAWING No.

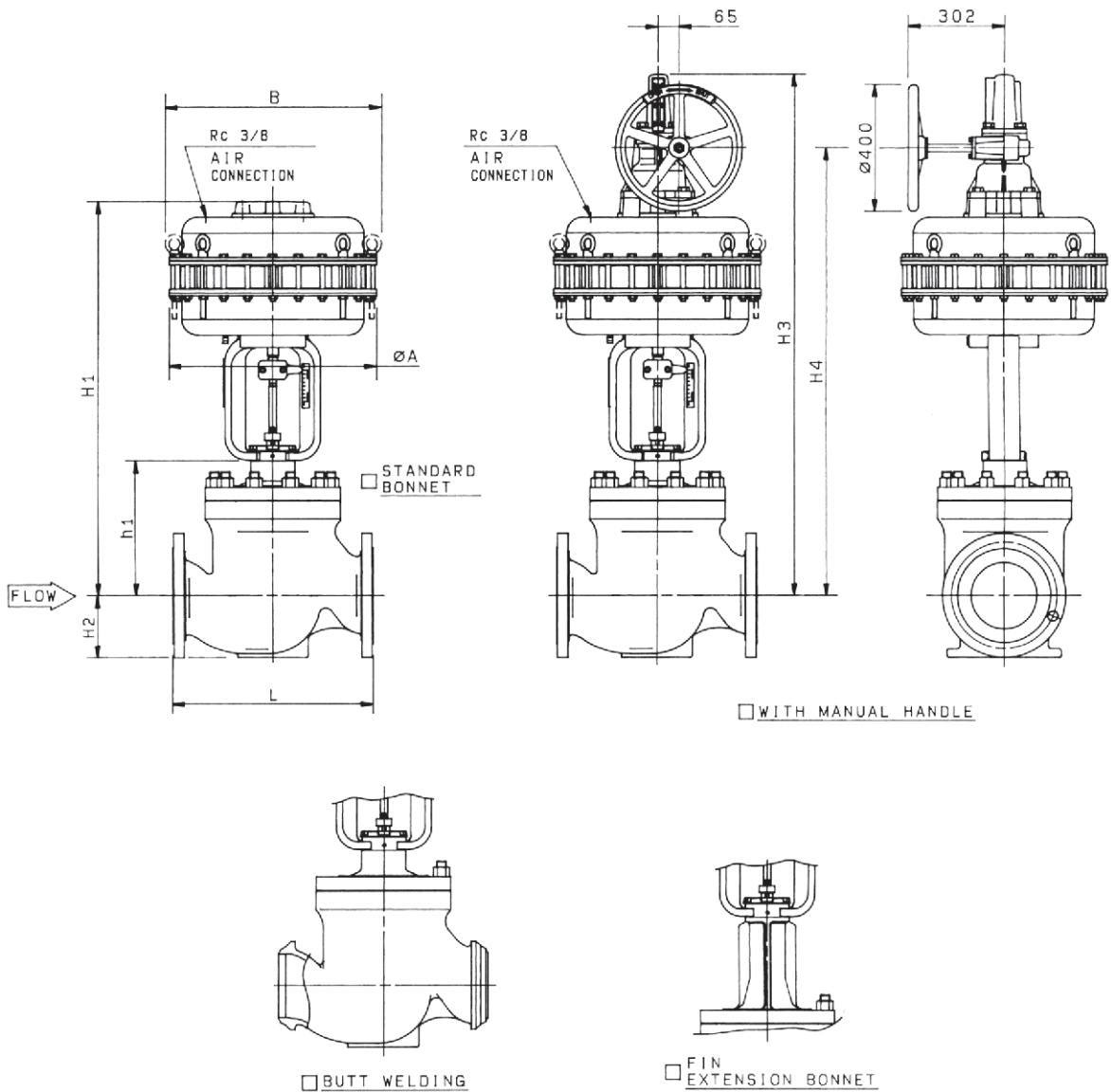
E-50 1T-526SLA-R-^N/_S

REV

A

KOSO

GLOBE - VALVE *DIRECT ACTION*



DIMENSIONS

UNIT :mm

VALVE SIZE	<input type="checkbox"/> ANSI 150#RF		<input type="checkbox"/> ANSI300#			<input type="checkbox"/> ANSI1600#			<input type="checkbox"/> STANDARD BONNET		<input type="checkbox"/> FIN EXTENSION BONNET		ACTUATOR				CODE NO.		
	<input type="checkbox"/> JPI 150#RF		<input type="checkbox"/> JPI300#			<input type="checkbox"/> JPI600#							<input type="checkbox"/> WITH MANUAL HANDLE		CODE NO.				
	<input type="checkbox"/> JIS 10KR		<input type="checkbox"/> JIS1530K RF			<input type="checkbox"/> JIS540K RF							<input type="checkbox"/> ST.D BONNET			<input type="checkbox"/> FIN/EXT BONNET			
CODE NO.	L	H2	L	L	H2	L	L	H2	h1	H1	h1	H1	A	B	H3	H4	H3	H4	
08 <input type="checkbox"/> 8" (200A)	543	180	568	584	195	610	613	215	355	1175	505	1325	650	678	1575	1340	1725	1490	526LLA

* FLANGE IS ACCORDING TO THE STANDARD WHICH IS DESCRIBED ON SPECIFICATION SHEET.

NOTE :

DRAWING No.

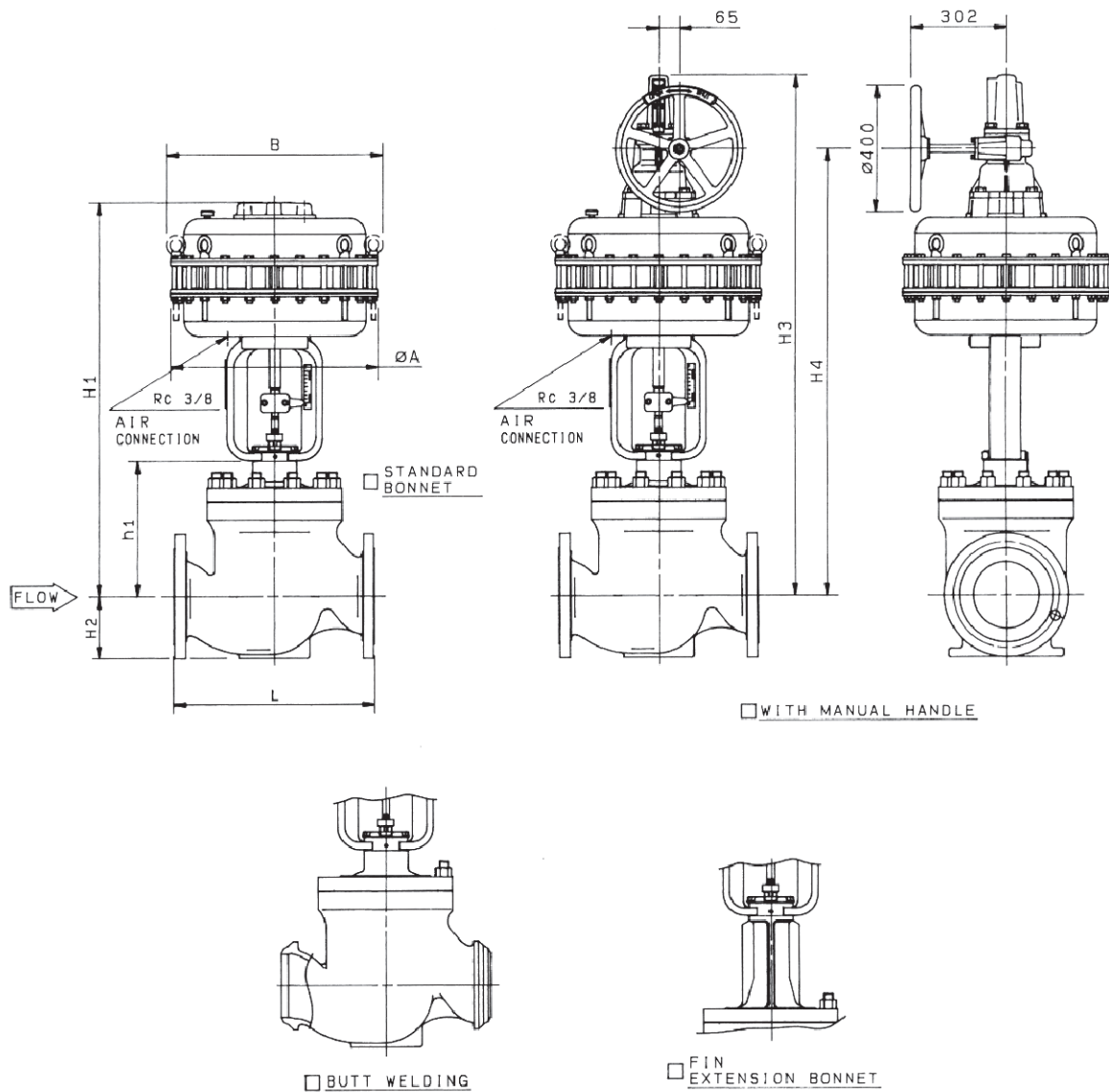
E-50 1T-526LLA-D-^N_S

REV

A

KOSO

GLOBE - VALVE *REVERSE ACTION*



DIMENSIONS

UNIT :mm

VALVE SIZE	ANSI 150#RF		ANSI 300#		ANSI 600#		STANDARD BONNET		FIN EXTENSION BONNET		ACTUATOR						CODE NO.		
	JPI 150#RF		JPI300#		JPI600#						WITH MANUAL HANDLE								
	JIS 10KRF		JIS530K RF		JIS540K RF						ST.D BONNET		FIN/EXT BONNET						
CODE NO.	L	H2	L	L	H2	L	L	H2	h1	H1	h1	H1	A	B	H3	H4	H3	H4	
08 <input type="checkbox"/> 8" (200A)	543	180	568	584	195	610	613	215	355	1175	505	1325	650	678	1575	1340	1725	1490	526LLA

* FLANGE IS ACCORDING TO THE STANDARD WHICH IS DESCRIBED ON SPECIFICATION SHEET.

NOTE :

DRAWING No.

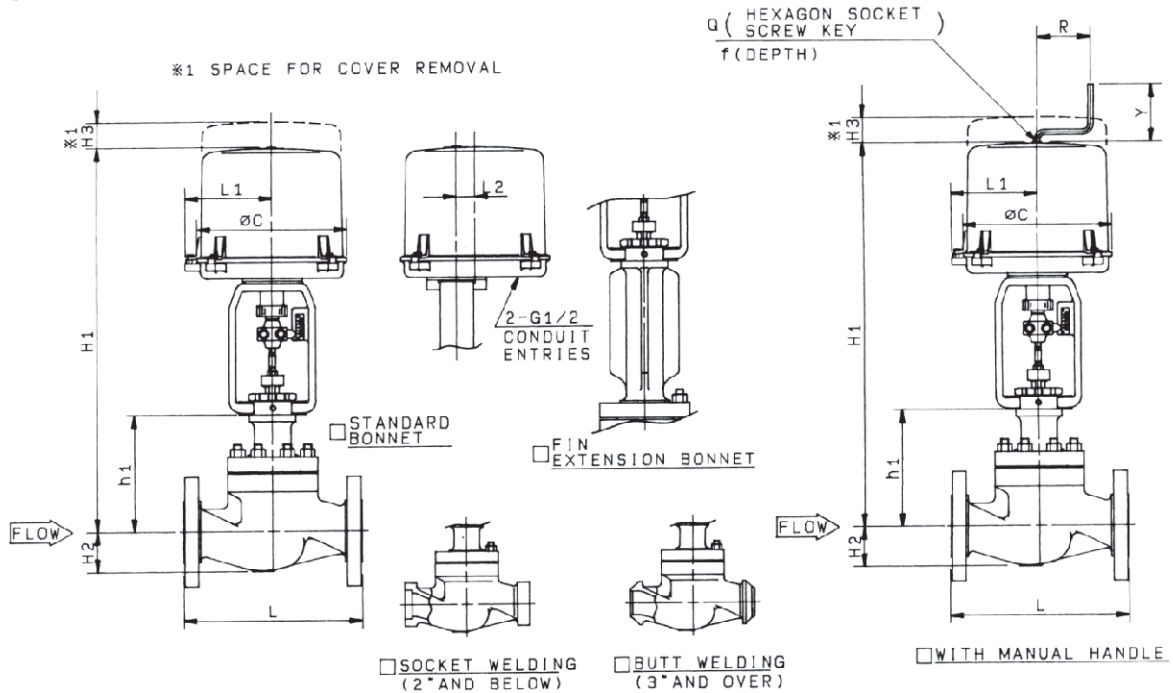
E-50 1T-526LLA-R-^N_S

REV

A

KOSO

GLOBE - VALVE



DIMENSIONS

UNIT :mm

VALVE SIZE	STANDARD BONNET								FIN EXTENSION BONNET		ACTUATOR																			
	ANSI 150#RF	ANSI 300#RF	ANSI 600#RF	ANSI 300#SW	ANSI 300#RTJ	ANSI 600#SW	ANSI 600#RTJ	ANSI 600#RTJ	H2	h1	H1	h1	H1	H3	L1	L2	ØC	WITH MANUAL HANDLE				SIZE CODE NO.								
	JPI 150#RF	JPI 300#RF	JPI 600#RF	JPI 300#SW	JPI 300#RTJ	JPI 600#SW	JPI 600#RTJ	JPI 600#RTJ										R	Y	Q-F	35A1LB	35A2LB	36A1LA	36A2LA	36AALA	36ABLA	34A1LA	34A2LA	34AALA	34ABLA
90 1/2" (15A)	184	194	206	206	206	206	206	206	32	129	530	229	630	205	130	28	225	80	87	6-12	35A1LB	35A2LB	36A1LA	36A2LA	36AALA	36ABLA	34A1LA	34A2LA	34AALA	34ABLA
											660		760	260	145	45	255	160	90	8-15	35B1LB	35B2LB	36B1LA	36B2LA	36BALA	36BBLA	34B1LA	34B2LA	34BALA	34BBLA
91 3/4" (20A)	184	194	206	206	206	206	206	206	32	129	530	229	630	205	130	28	225	80	87	6-12	35A1LB	35A2LB	36A1LA	36A2LA	36AALA	36ABLA	34A1LA	34A2LA	34AALA	34ABLA
											660		760	260	145	45	255	160	90	8-15	35B1LB	35B2LB	36B1LA	36B2LA	36BALA	36BBLA	34B1LA	34B2LA	34BALA	34BBLA
01 1" (25A)	184	197	210	210	210	210	210	210	36	129	530	229	630	205	130	28	225	80	87	6-12	35A1LB	35A2LB	36A1LA	36A2LA	36AALA	36ABLA	34A1LA	34A2LA	34AALA	34ABLA
											660		760	260	145	45	255	160	90	8-15	35B1LB	35B2LB	36B1LA	36B2LA	36BALA	36BBLA	34B1LA	34B2LA	34BALA	34BBLA
93 1 1/2" (40A)	222	235	251	251	248	251	251	251	58	175	580	325	730	205	130	28	225	80	87	6-12	35A1LB	35A2LB	36A1LA	36A2LA	36AALA	36ABLA	34A1LA	34A2LA	34AALA	34ABLA
											705		855	260	145	45	255	160	90	8-15	35B1LB	35B2LB	36B1LA	36B2LA	36BALA	36BBLA	34B1LA	34B2LA	34BALA	34BBLA
											755		905	260	145	45	255	160	90	8-15	35B1LB	35B2LB	36B1LA	36B2LA	36BALA	36BBLA	34B1LA	34B2LA	34BALA	34BBLA
02 2" (50A)	254	267	286	286	283	286	289	289	62	175	580	325	730	205	130	28	225	80	87	6-12	35A1LB	35A2LB	36A1LA	36A2LA	36AALA	36ABLA	34A1LA	34A2LA	34AALA	34ABLA
											705		855	260	145	45	255	160	90	8-15	35B1LB	35B2LB	36B1LA	36B2LA	36BALA	36BBLA	34B1LA	34B2LA	34BALA	34BBLA
											755		905	260	145	45	255	160	90	8-15	35B1LB	35B2LB	36B1LA	36B2LA	36BALA	36BBLA	34B1LA	34B2LA	34BALA	34BBLA
94 2 1/2" (65A)	276	292	311	311	308	311	314	314	75	200	605	350	755	205	130	28	225	80	87	6-12	35A1LB	35A2LB	36A1LA	36A2LA	36AALA	36ABLA	34A1LA	34A2LA	34AALA	34ABLA
											730		880	260	145	45	255	160	90	8-15	35B1LB	35B2LB	36B1LA	36B2LA	36BALA	36BBLA	34B1LA	34B2LA	34BALA	34BBLA
											780		930	260	145	45	255	160	90	8-15	35B1LB	35B2LB	36B1LA	36B2LA	36BALA	36BBLA	34B1LA	34B2LA	34BALA	34BBLA
03 3" (80A)	298	317	337	317	333	337	340	340	85	200	605	350	755	205	130	28	225	80	87	6-12	35A1LB	35A2LB	36A1LA	36A2LA	36AALA	36ABLA	34A1LA	34A2LA	34AALA	34ABLA
											730		880	260	145	45	255	160	90	8-15	35B1LB	35B2LB	36B1LA	36B2LA	36BALA	36BBLA	34B1LA	34B2LA	34BALA	34BBLA
											780		930	260	145	45	255	160	90	8-15	35B1LB	35B2LB	36B1LA	36B2LA	36BALA	36BBLA	34B1LA	34B2LA	34BALA	34BBLA
04 4" (100A)	352	368	394	368	384	394	397	397	105	245	775	395	925	260	145	45	255	160	90	8-15	35B1LB	35B2LB	36B1LA	36B2LA	36BALA	36BBLA	34B1LA	34B2LA	34BALA	34BBLA
											825		975	260	145	45	255	160	90	8-15	35B1LB	35B2LB	36B1LA	36B2LA	36BALA	36BBLA	34B1LA	34B2LA	34BALA	34BBLA

* FLANGE IS ACCORDING TO THE STANDARD WHICH IS DESCRIBED ON SPECIFICATION SHEET.

NOTE :

DRAWING No.

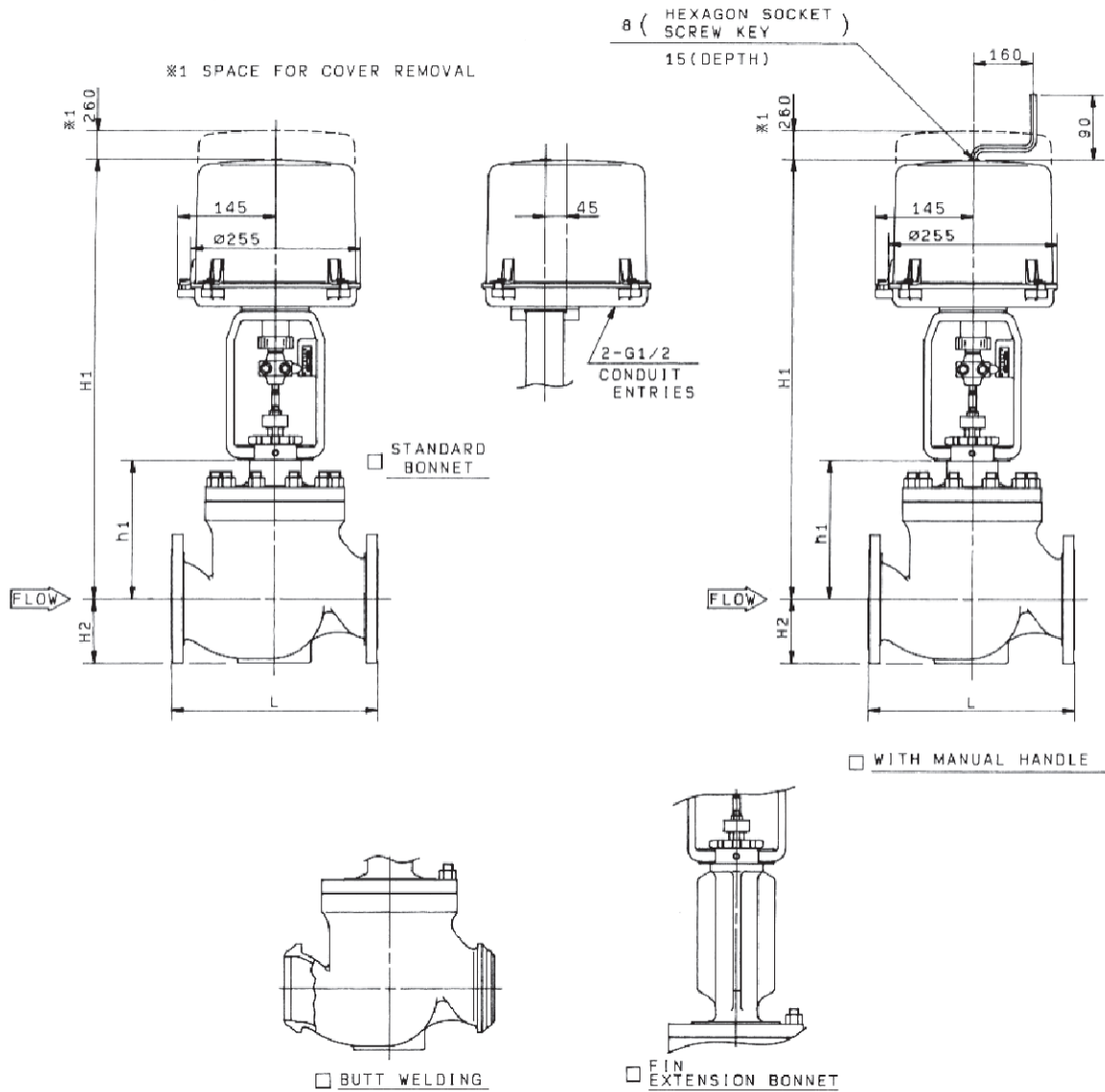
3500LB
E-50 1T-3600LA-B-N
3400LA T-01

REV

KOSO

C

GLOBE - VALVE



DIMENSIONS

UNIT :mm

VALVE SIZE	<input type="checkbox"/> ANSI 150#RF <input type="checkbox"/> JPI 150#RF <input type="checkbox"/> JIS 10KRF		<input type="checkbox"/> ANSI 300# <input type="checkbox"/> JPI300# <input type="checkbox"/> JIS20K RF <input type="checkbox"/> JIS30K K RF			<input type="checkbox"/> ANSI 600# <input type="checkbox"/> JPI600# <input type="checkbox"/> JIS40K RF			<input type="checkbox"/> STANDARD BONNET		<input type="checkbox"/> FIN EXTENSION BONNET		ACTUATOR SIZE CODE NO.		
	CODE NO.	L	H2	L	L	H2	L	L	H2	h1	H1	h1			
05 <input type="checkbox"/> 5" (125A)	403	130	425	441	140	460	463	170	285	865	435	1015	<input type="checkbox"/> 35B2LB	<input type="checkbox"/> 36B2LA	<input type="checkbox"/> 34B2LA
06 <input type="checkbox"/> 6" (150A)	451	145	473	489	165	508	511	180	290	870	440	1020			

* FLANGE IS ACCORDING TO THE STANDARD WHICH IS DESCRIBED ON SPECIFICATION SHEET.

NOTE :

DRAWING No.

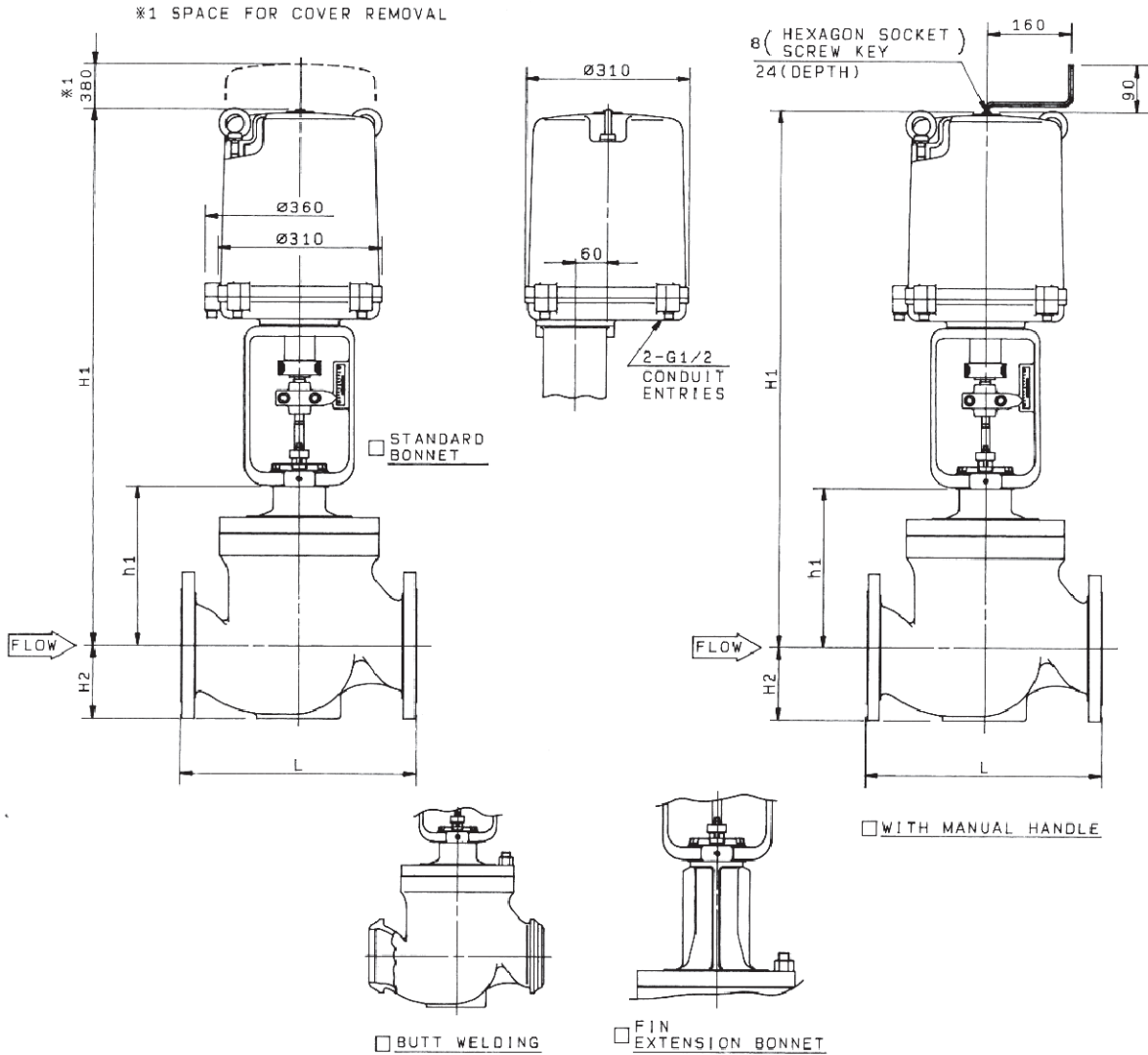
3500LB
E-50 1T-3600LA-B-N
3400LA T-02

REV

A

KOSO

GLOBE - VALVE



DIMENSIONS

UNIT :mm

VALVE SIZE	ANSI 150#RF			ANSI 300#			ANSI 600#			STANDARD BONNET		FIN EXTENSION BONNET		ACTUATOR SIZE CODE NO.			
	JPI	JIS	10KRF	JPI300#	JIS20K RF	JIS30K RF	JPI600#	JIS40K RF	RF	BW	H1	H2	RF				BW
CODE NO.	L	H2	L	L	H2	L	L	H2	h1	H1	h1	H1					
05 <input type="checkbox"/> 5" (125A)	403	130	425	441	140	460	463	170	285	1010	285	1010	1160	<input type="checkbox"/> 35C1LB	<input type="checkbox"/> 36C1LA	<input type="checkbox"/> 36C1LB	
										1070			435	1220	<input type="checkbox"/> 35C2LB	<input type="checkbox"/> 36C2LB	<input type="checkbox"/> 34C2LA
06 <input type="checkbox"/> 6" (150A)	451	145	473	489	165	508	511	180	290	1015	290	1015	1165	<input type="checkbox"/> 35C1LB	<input type="checkbox"/> 36C1LB	<input type="checkbox"/> 34C1LA	
										1075			440	1225	<input type="checkbox"/> 35C2LB	<input type="checkbox"/> 36C2LB	<input type="checkbox"/> 34C2LA
08 <input type="checkbox"/> 8" (200A)	543	180	568	584	195	610	613	215	355	1140	355	1140	505	1290	<input type="checkbox"/> 35C2LB	<input type="checkbox"/> 36C2LA	<input type="checkbox"/> 34C2LA

* FLANGE IS ACCORDING TO THE STANDARD WHICH IS DESCRIBED ON SPECIFICATION SHEET.

NOTE :

DRAWING No.

35COLB
E-50 1T-36COLA-B-T
34COLA

REV

C

KOSO